

NEW

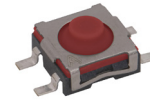
# 6 mm Compact Top Mount Endurance SMT Tact Switch

## Features/Benefits

- 6.0 x 6.1 mm dimension
- Height 3.45 mm
- Soft actuator
- Long life - 3M cycles
- IP54

## Typical Applications

- Elevator button & alarm
- Robotic vaccum
- Door handle
- Mower



B  
Tactile Switches

## Specification

FUNCTION: Momentary action  
CONTACT ARRANGEMENT: SPDT, NC  
TERMINALS: SMT termination  
TRAVEL: 0.3 ± 0.2 mm

## Mechanical

OPERATING LIFE: 2,000,000 cycles

## Electrical

VOLTAGE: DC 1V to 16V  
CURRENT: 10µA to 50mA  
CONTACT RESISTANCE: 200mΩ max.  
500mΩ max. after testing  
INSULATION RESISTANCE: 100 MΩ min.  
DIELECTRIC VOLTAGE: AC 250V

## Environmental

OPERATING TEMPERATURE: -40°C to 90°C  
STORAGE TEMPERATURE: -40°C to 90°C

## Process

SOLDERING: This component is suited to the following methods: Infrared Reflow Soldering in accordance with IEC61760-1

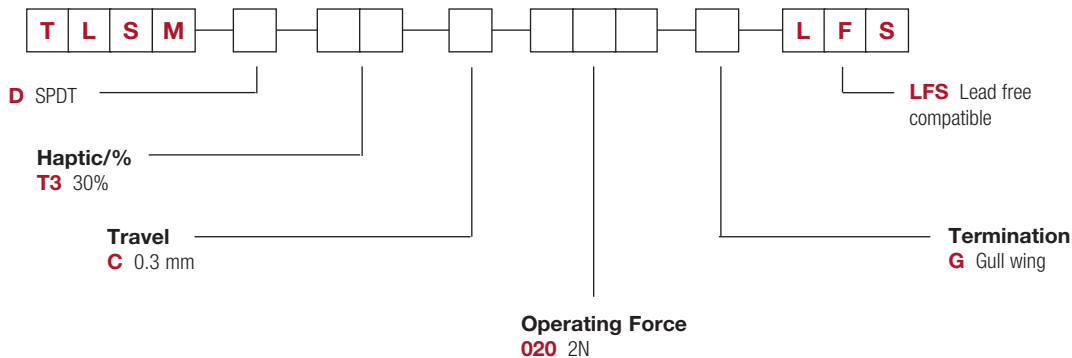
## Packaging

1100 pieces per reel

## How To Order

Our easy build-a-switch concept allows you to mix and match options to create the switch you need. To order, select desired option from each category and place it in the appropriate box.

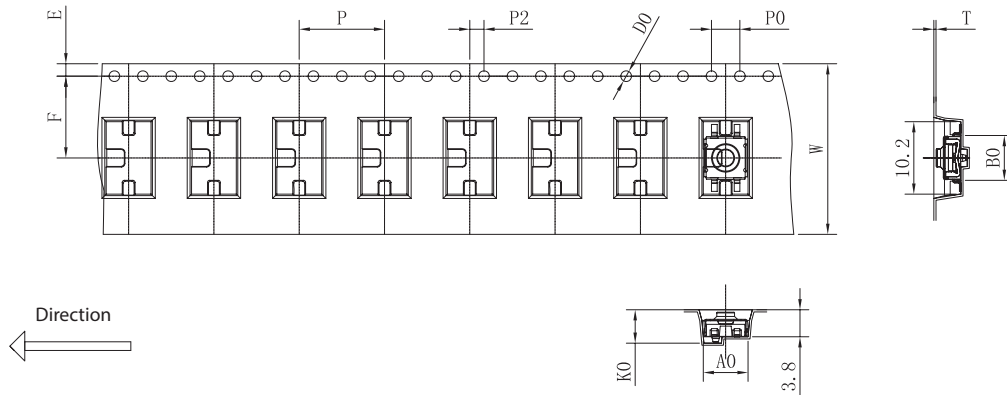
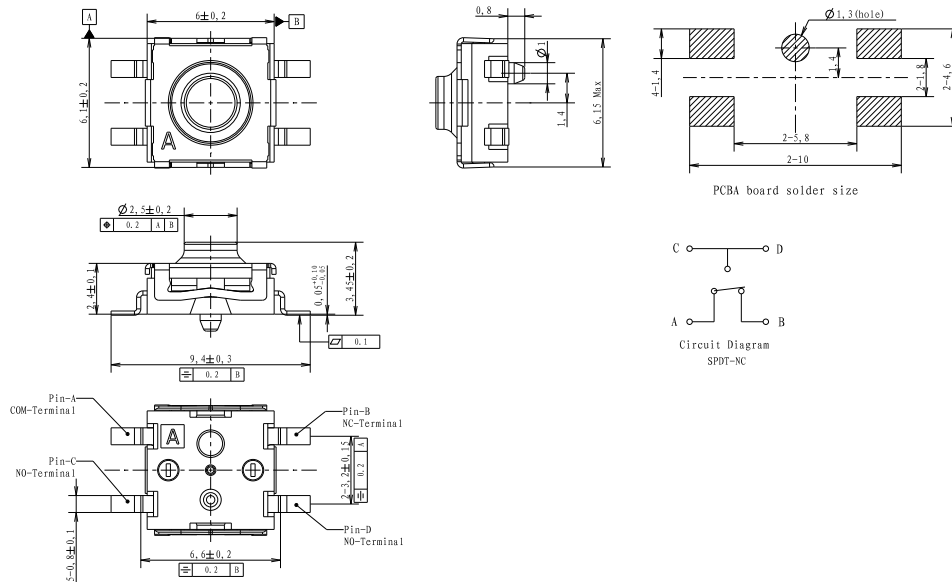
For any part number different from those listed above, please consult your local representative.



# TLSM Series

## 6 mm Compact Top Mount Endurance SMT Tact Switch

NEW



# Mouser Electronics

Authorized Distributor

Click to View Pricing, Inventory, Delivery & Lifecycle Information:

[C&K Switches:](#)

[TLMDT3C020GLFS](#)