

NEW



- ## Typical Applications

- www.ckswitches.com

NEW

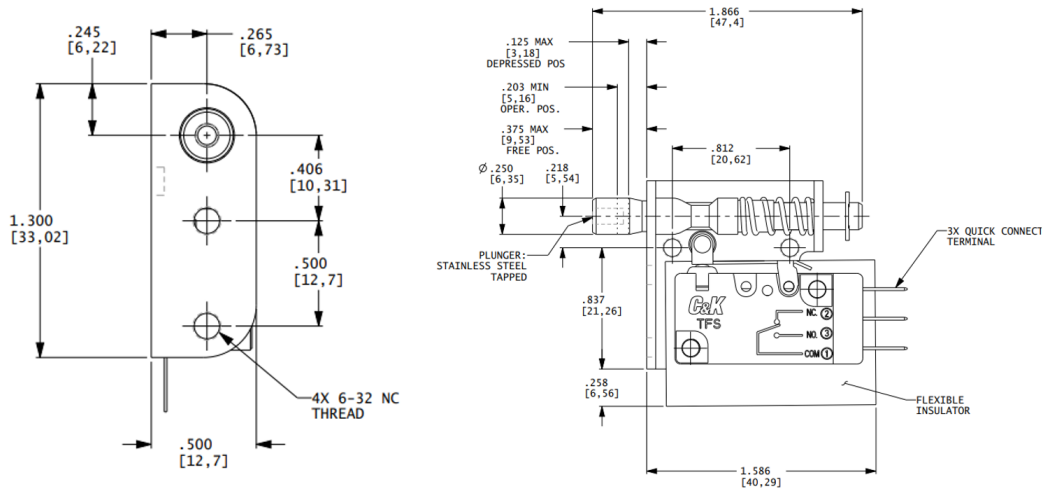
SL Series Sealed Interlock Door Switches

MODEL

11SL WITH SMALL BRACKET



11SL404
SPDT

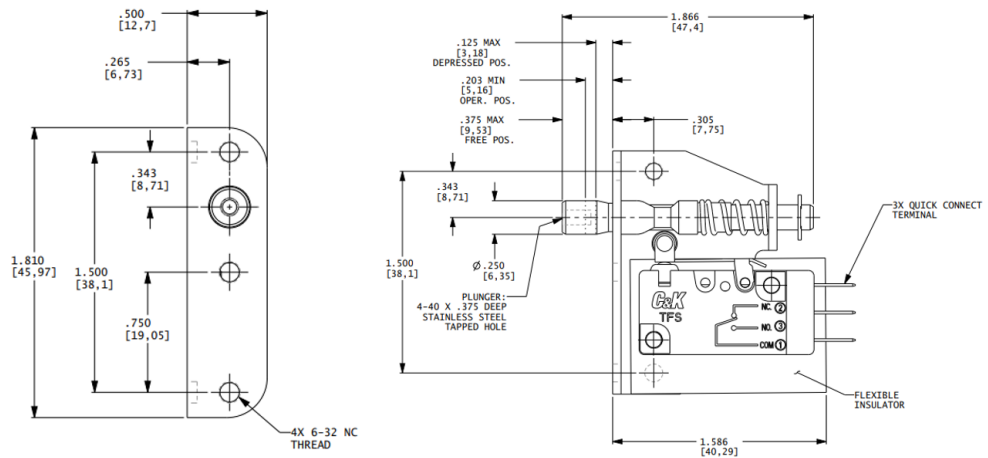


SWITCH CHARACTERISTICS	
OPERATING FORCE LBS MAX	8

12SL WITH LARGE BRACKET



12SL404
SPDT



SWITCH CHARACTERISTICS	
OPERATING FORCE LBS MAX	8



Dimensions are shown: Inches (mm)
Specifications and dimensions subject to change



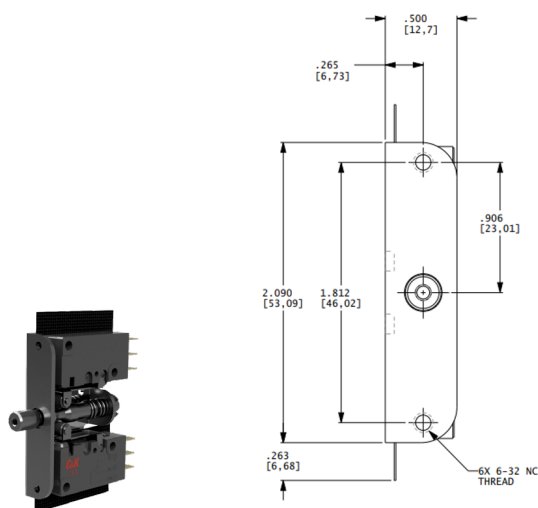
8 Dec 21

SL Series Sealed Interlock Door Switches

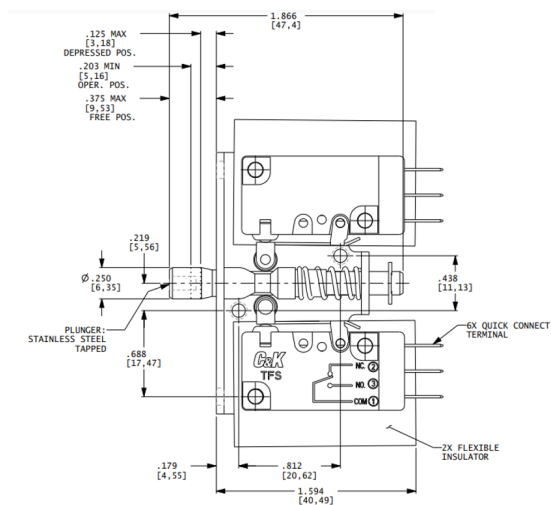
NEW

MODEL

23SL WITH TWO SWITCHES



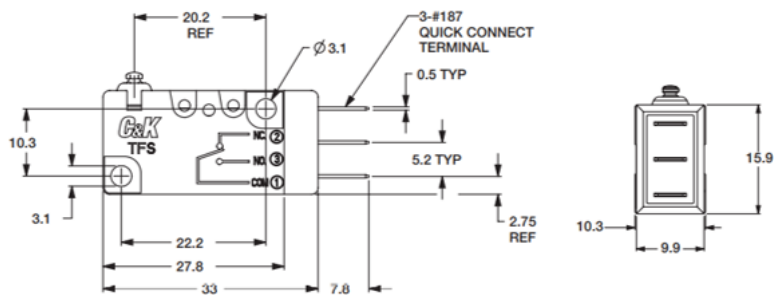
23SL404
SPDT



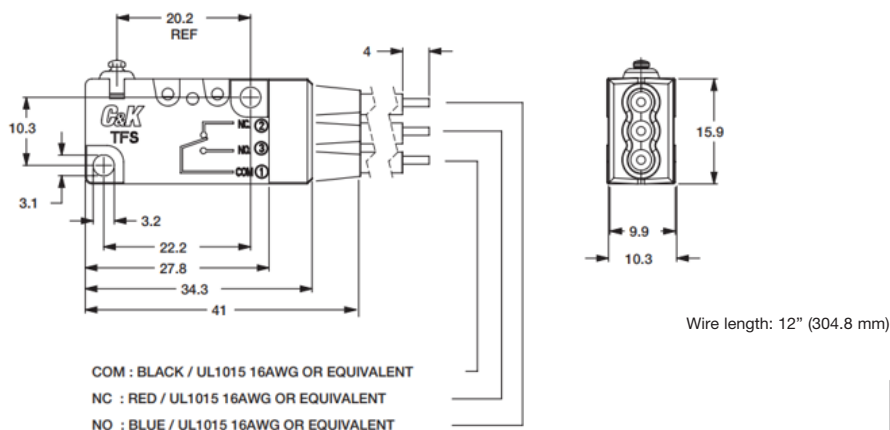
SWITCH CHARACTERISTICS	
OPERATING FORCE LBS MAX	8

TERMINATIONS

40 0.187" QUICK CONNECT



W WIRE UL1015



Third Angle
Projection

Dimensions are shown: Inches (mm)
Specifications and dimensions subject to change

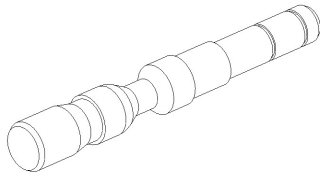


NEW

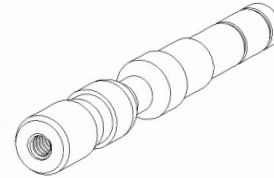
SL Series Sealed Interlock Door Switches

PLUNGERS

2 STAINLESS STEEL, NOT TAPPED



4 STAINLESS STEEL, TAPPED 4-40 X 0.375 (9.52) MIN. DEPTH



ELECTRICAL RATING

01 0.1A @ 125/250 VAC OR 30VDC

03 3A @ 125/250 VAC OR 30VDC

06 6A @ 125/250 VAC OR 30VDC

10 10A @ 125/250 VAC OR 5A@ 30VDC

Electrical Rating Code	AMPS	Wire Type 16AWG
01	0.1	.
03	3	.
06	6	.
10	10	.



Snap-acting

Mouser Electronics

Authorized Distributor

Click to View Pricing, Inventory, Delivery & Lifecycle Information:

[C&K Switches:](#)

[11SL40410](#) [12SL40210](#) [23SL40410](#) [12SL40201](#) [23SL40201](#) [23SL40210](#) [23SL40401](#) [11SL40401](#)