

DIGITAST

Microminiature SPDT, Key Switches



Features/Benefits

- **High reliability/long life**
- **Designed for low level switching**
- **Ready to implement on PCB**
- **Latching function available**
- **Several button options**
- **RoHS compliant and compatible**

Typical Applications

- **Medical**
- **Instrumentation**
- **Industrial electronics**
- **Audio electronics**

Construction

FUNCTION: momentary or push-push
CONTACT ARRANGEMENT: 1 change over contact SPDT, NO
MODE OF SWITCHING: Non-shorting
DISTANCE BETWEEN BUTTON CENTERS:
HORIZONTAL MINIMUM: 12,7 (0.500) or 17,78 (0.700)
VERTICAL MINIMUM: 17,78 (0.700)
TERMINALS: PC pins
MOUNTING: Soldering, centering pins

Mechanical

TOTAL TRAVEL: ≤ 3 (.0018)
SWITCHING TRAVEL: 1,5 (0.0591)
LATCHING TRAVEL: 1,8 (0.0709)
OPERATING FORCE: 1.5 +/- 0.5 N (150 +/- 50 grams)

Process

SOLDERABILITY:
Wave soldering, compatible with lead free soldering profile
Hand soldering, 350°C for 3 seconds

Electrical

SWITCHING POWER MAX.: 240 mW DC
SWITCHING VOLTAGE MAX.: 24 V DC
SWITCHING CURRENT MAX.: 10 mA DC
CARRYING CURRENT AT 20°C (push-push version): 100 mA
DIELECTRIC STRENGTH (50 Hz, 1 min): 500 V
OPERATING LIFE with or without max. switching power
Momentary: $\geq 5 \times 10^6$ operations
Push-push: $\geq 5 \times 10^6$ operations
CONTACT RESISTANCE: Initial ≤ 50 m Ω
After 5×10^6 operations: ≤ 100 m Ω
INSULATION RESISTANCE: $\geq 10^{10}$ Ω
CAPACITANCE at f= 10 kHz: ≤ 0.8 pF
BOUNCE TIME: ≤ 2.5 ms
Operating speed 400 mm/s (15.75/s)

Environmental

OPERATING TEMPERATURE: -25°C to 85°C.

How To Order

Our easy build-a-switch concept allows you to mix and match options to create the switch you need. To order, select desired option from each category and place it in the appropriate box. **Some of the configurations may not be available or could require some development.**

Switch

<div>Series</div> <div><div>SER</div><div>SET</div><div>SERU</div></div> <div>Narrow button</div> <div>Wide button</div> <div>Switch body only (no button)</div>	<div>LED</div> <div><div>NONE</div><div>L</div><div>2L</div></div> <div>No LED</div> <div>1 LED</div> <div>2 LED's</div>	<div>Button Color**</div> <div><div>None</div><div>BK</div><div>GY</div></div> <div>(SERU)</div> <div>Black</div> <div>Gray</div>	<div>1st LED Color***</div> <div><div>NONE</div><div>RD</div><div>YE</div><div>GN</div></div> <div>No LED</div> <div>Red</div> <div>Yellow</div> <div>Green</div>	<div>LED Spacing*</div> <div><div>NONE</div><div>7.62</div></div> <div>Narrow LED Spacing (TYP Europe)</div> <div>Wide LED Spacing (TYP No. America)</div>	<div>2nd LED Color***</div> <div><div>NONE</div><div>RD</div><div>YE</div><div>GN</div></div> <div>No LED</div> <div>Red</div> <div>Yellow</div> <div>Green</div>	<div>Function</div> <div><div>EE</div><div>OA</div></div> <div>Latching</div> <div>Non-latching</div>	<div>Contact Material</div> <div><div>AU</div></div> <div>Gold</div>	<div>Body Color</div> <div><div>NONE</div><div>BRN</div></div> <div>White (STD)</div> <div>Brown</div>
--	--	---	---	--	---	---	--	--

Button

<div>Button Style</div> <div><div>SR</div><div>ST</div></div> <div>Narrow</div> <div>Wide</div>	<div>LED Holes</div> <div><div>NONE</div><div>L</div><div>2L</div></div> <div>No LED holes</div> <div>1 LED hole</div> <div>2 LED holes</div>	<div>Button Color**</div> <div><div>BK</div><div>GY</div></div> <div>Black</div> <div>Gray</div>	<div>Latching</div> <div><div>None</div><div>EE</div></div> <div>For use with momentary switch</div> <div>With "EE" staple for latching</div>
---	---	--	---

* LED spacing only applies when 1 LED requested

** Additional button colors available by request

*** Additional LED colors available by request including Bi color configurations

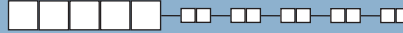


Dimensions are shown: mm
Specifications and dimensions subject to change

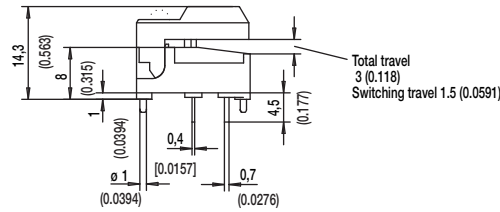
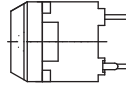
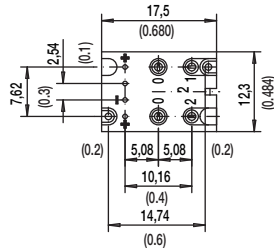
DIGITAST

Microminiature SPDT, Key Switches

DESIGNATION



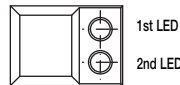
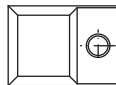
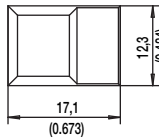
SER NARROW BUTTON



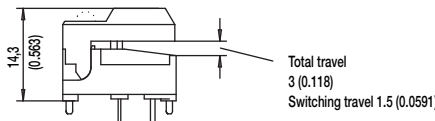
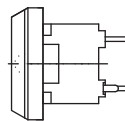
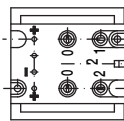
SER

SERL

SER2L



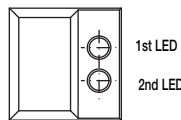
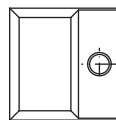
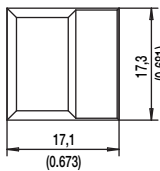
SET WIDE BUTTON



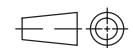
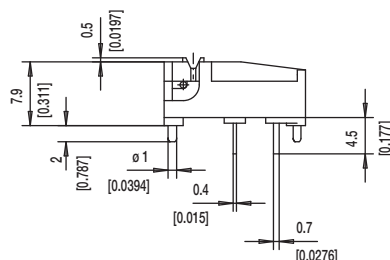
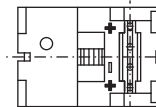
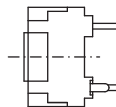
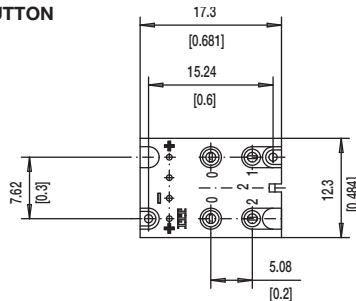
SET

SETL

SET2L



SERU NO BUTTON



First Angle
Projection

Dimensions are shown: mm
Specifications and dimensions subject to change



D

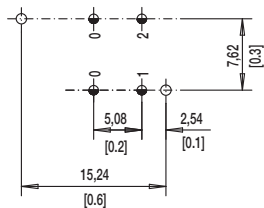
Key Switches

DIGITAST

Microminiature SPDT, Key Switches

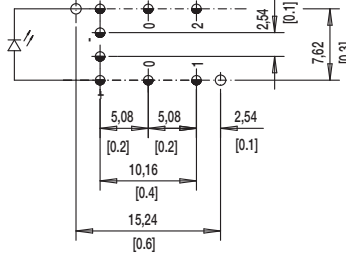
LED

NONE NO LED

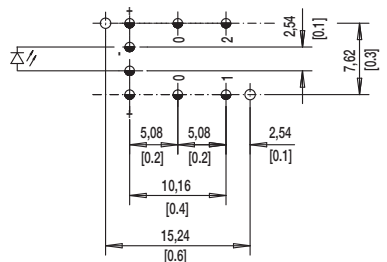


L 1 LEDs

7.62 mm Spacing (TYP No. America)

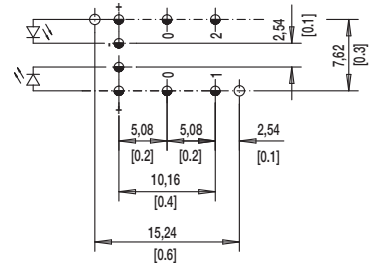


NARROW SPACING (TYP EUROPE)



TOP VIEW OF PCB

2L 2 LEDs



ø 1.0±0.1 (0.0394±0.00349)

ø 1.1±0.05 (0.0433±0.00197)

BUTTON COLOR

BK BLACK

GY GRAY

Other button colors available by request [red (RD), green (GN), white (WH), yellow (YE), blue (BU), orange (OG)].

LED COLOR

OPTION CODE	COLOR
NONE	Models without LED
RD	Red
GN	Green
YE	Yellow

CONTACT MATERIAL

OPTION CODE	MATERIAL
AU	Gold

FUNCTION

OPTION CODE	COLOR	SCHEMATIC
OA	Momentary	
EE	Push-Push	



First Angle
Projection

Dimensions are shown: mm
Specifications and dimensions subject to change

C&K



D

Key Switches

Mouser Electronics

Authorized Distributor

Click to View Pricing, Inventory, Delivery & Lifecycle Information:

[C&K Switches:](#)

[SER2LBKYEAGNAUOA](#) [SERU2LGNRDAUOA](#) [SERU2LGNYEAUOA](#) [SERU2LRDRDAUOA](#) [SET2LBKRDRDAUOA](#)