



ATP16 Series Anti-Vandal Sealed Pushbutton Switch

Features/Benefits

- **Momentary or Lock version**
- **IP67 sealed**
- **Rated at 2A / 36 Vdc**
- **1,000,000 life cycle**
- **Various colors of LED illuminate indicator**
- **Choices of actuator with ring or power logo**
- **RoHS compliant**

Typical Applications

- **Alarm, safety and security systems**
- **Intercom "push-to-talk" devices**
- **Automatic food and drink vending machines**
- **Parking lot ticket machines & ticket paying stations**
- **Industrial Instruments**



Specifications

FUNCTION: SPST
CONTACT ARRANGEMENT: N.O.
MOUNTING TYPE: Threaded front panel mount
TORQUE FOR THREADED BODY: 11.5 kgf/cm

Mechanical

OPERATING LIFE: Momentary 1,000,000 cycles
Lock 100,000 cycles
TOTAL TRAVEL: Momentary 2.0 mm; Lock 2.3 mm
OPERATING FORCE: 4.5 ± 1.5N

Electrical

CONTACT RATING: 2A / 36Vdc
OPERATING LIFE: Make-and-break cycles at full load
200,000 (Momentary)
100,000 (Lock)
DIELECTRIC STRENGTH: 2,000 V RMS @ sea level
INSULATION RESISTANCE: 1,000 MΩ min. @ 500 VDC
INITIAL CONTACT RESISTANCE : 50 mΩ max @1A 12VDC

Materials

BUSHING: Stainless steel / Aluminum alloy, anodized
BASE: PBT (UL 94-A0), Nylon 6/6 (lock version)
ACTUATOR: PC (UL 94-V2); POM (lock version)
INTERNAL ASSEMBLY: POM / PA66
SPRING: Steel
SEALING / O-ring: Silicone (Translucent) / Silicone
TERMINALS / CONTACT: Brass, Silver or gold plated
HEX NUT: Brass (Nickel plated)

Operating Environment

OPERATING TEMPERATURE: -20°C to +70°C
SEALING / PROTECTION: IP67

NOTE: Specifications and materials listed above are for switches with standard options.
For information on specific and custom switches, please contact Customer Service.

Build-A-Switch

To order, simply select desired option from each category and place in the appropriate box.

A	T	P	1	6							S				G
----------	----------	----------	----------	----------	--	--	--	--	--	--	----------	--	--	--	----------

Designation _____
ATP16 Series

Actuator Style _____
D Dome*
S Standard**

Actuator Indicator _____
L1 Ring
L5 Ring & Power logo

LED Illumination

Color	Dual color
0 Without LED	A Red & Green
2 White	R RGB***
3 Red	
4 Orange***	
5 Yellow	
6 Green	
7 Blue	

LED voltage DC _____
00 Without LED
03 3V
06 6V
12 12V
24 24V

Terminal plating _____
G Gold flash

Termination _____
04 Solder lug
W1 Wire lead 500mm ****

Mechanical function _____
A Momentary (Double D bushing)
E Lock (D shape bushing)

Contact arrangement _____
S SPST

Bushing type

B3 Al alloy (Black anodized)
B4 Al alloy (Natural anodized)
M0 Stainless (Natural), Round***
M4 Stainless (Natural), Double D***

* For bushing type B3 and B4 only.

** Available on bushing type M0 & M4 only.

*** Available on momentary function only.

**** Available upon request, please consult your sales representative for details.

ATP16 Series Anti-Vandal Sealed Pushbutton Switch

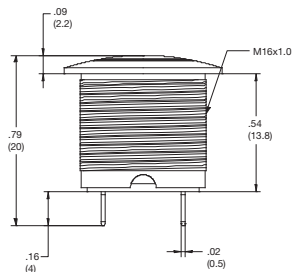


A
Pushbutton

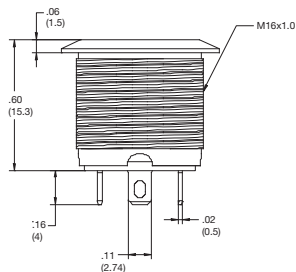
STANDARD VIEW

MOMENTARY

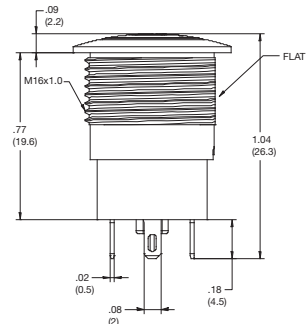
DOME



STANDARD / FLAT

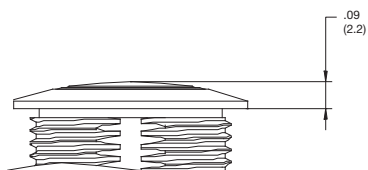


LOCK

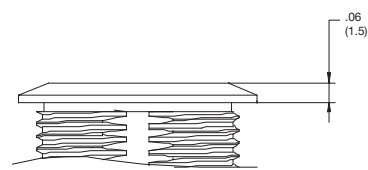


ACTUATOR STYLE

D DOME

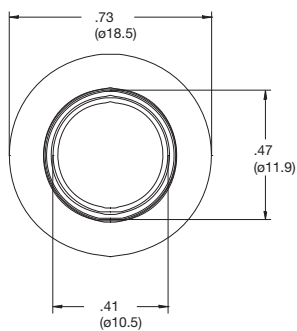


S STANDARD / FLAT

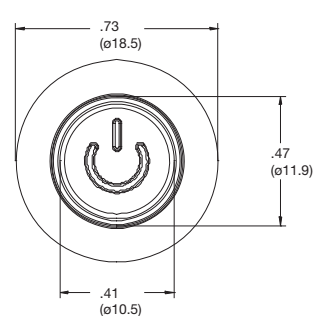


ACTUATOR INDICATOR

L1 RING



L5 RING & POWER

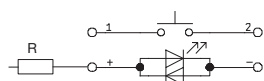




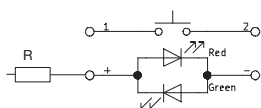
ATP16 Series Anti-Vandal Sealed Pushbutton Switch

CIRCUIT

SINGLE COLOR LED

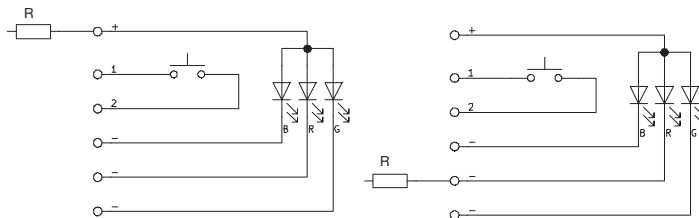


DUAL COLOR LED



MOMENTARY

RGB LED

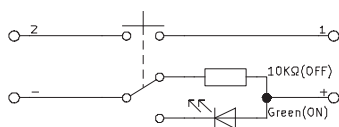


6 / 12 / 24V LED

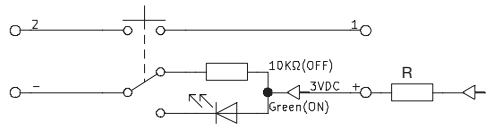
3V LED

LOCK

SINGLE COLOR LED

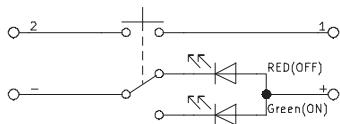


3V LED

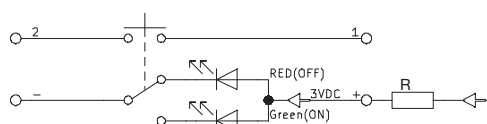


6 / 12 / 24V LED

DUAL COLOR LED



3V LED



6 / 12 / 24V LED

R: Resistor value is according to the LED voltage applied.

Resistor value
(Apply LED Voltage)

LED input 3 VDC, 47 ohms
(Red/Yellow/Orange LED type only)

LED input 6 VDC, 180 ohms

LED input 12 VDC, 470 ohms

LED input 24 VDC, 1000 ohms

Ohms value of resistance tolerance: $\pm 5\%$



A

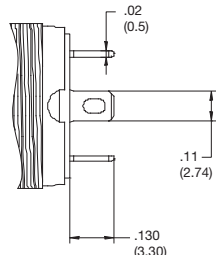
Pushbutton

ATP16 Series Anti-Vandal Sealed Pushbutton Switch

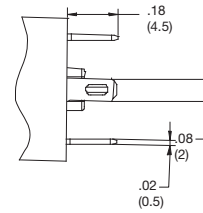
TERMINATION

04 SOLDER LUG

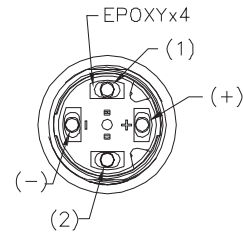
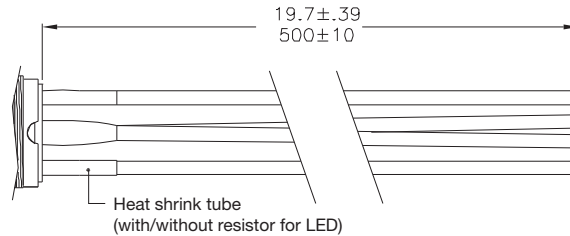
MOMENTARY



LOCK



W1 WIRE LEAD 500MM*

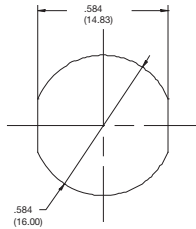


* Available upon request, please consult your sales representative for details.

PANEL CUTOUT

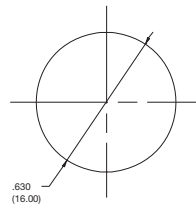
B3, B4 & M4

DOUBLE D



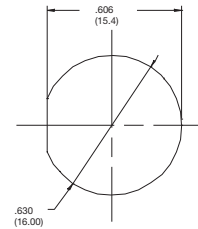
M0

ROUND



B3 & B4

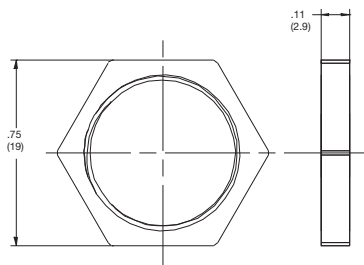
D SHAPE



HARDWARE

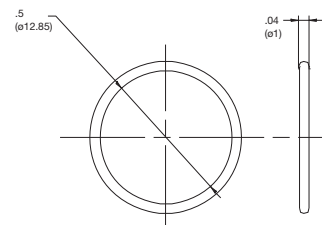
HEX NUT

Order PN: ATP16-HN



O RING

Order PN: ATP16-OR



Mouser Electronics

Authorized Distributor

Click to View Pricing, Inventory, Delivery & Lifecycle Information:

C&K Switches:

[ATP16-SL1-612-M4SA-04G](#) [ATP16-DL5-606-B3SA-04G](#) [ATP16-DL5-306-B4SA-04G](#) [ATP16-DL1-000-B4SA-04G](#)
[ATP160004](#) [ATP16-DL5-312-B3SE-W1G](#) [ATP16-DL5-712-B3SE-W1G](#) [ATP16SL1000M4SA04G](#)
[ATP16SL1R03M0SA04G](#) [ATP16SL1000M0SA04G](#) [ATP16DL1000B3SE04G](#) [ATP16DL1000B4SE04G](#)
[ATP16DL1303B4SE04G](#) [ATP16DL1506B3SA04G](#) [ATP16DL1603B3SA04G](#) [ATP16DL1612B4SE04G](#)
[ATP16DL1R12B4SAW1G](#) [ATP16DL5000B4SE04G](#) [ATP16DL5212B3SAW1G](#) [ATP16DL5324B4SE04G](#)
[ATP16DL5512B3SEW1G](#) [ATP16DL5612B4SA04G](#) [ATP16DL5712B4SA04G](#) [ATP16DL5A03B3SAW1G](#)
[ATP16DL5A03B4SAW1G](#) [ATP16DL5A12B4SAW1G](#) [ATP16DL5R06B4SAW1G](#) [ATP16DL5R12B3SA04G](#)
[ATP16DL5R12B4SAW1G](#) [ATP16DL5R24B4SAW1G](#) [ATP16SL1000M4SAW1G](#) [ATP16SL1324M0SA04G](#)
[ATP16SL1603M4SAW1G](#) [ATP16SL1606M0SA04G](#) [ATP16SL1A06M0SA04G](#) [ATP16SL1A12M4SAW1G](#)
[ATP16SL1A24M0SA04G](#) [ATP16SL1R06M0SA04G](#) [ATP16SL1R06M4SAW1G](#) [ATP16SL1R12M4SA04G](#)
[ATP16SL1R24M0SA04G](#) [ATP16SL1R24M4SAW1G](#) [ATP16SL5203M4SAW1G](#) [ATP16SL5406M4SA04G](#)
[ATP16SL5603M4SA04G](#) [ATP16SL5703M4SAW1G](#) [ATP16SL5712M4SA04G](#) [ATP16SL5A06M0SA04G](#)
[ATP16SL5R00M4SA04G](#) [ATP16SL5R06M4SAW1G](#) [ATP16SL5R24M4SAW1G](#) [ATP16DL1R24B3SAW1G](#)
[ATP16DL5000B4SA04G](#) [ATP16DL5206B4SE04G](#) [ATP16DL5212B4SA04G](#) [ATP16DL5312B4SE04G](#)
[ATP16SL1000M0SAW1G](#) [ATP16DL1612B3SA04G](#) [ATP16SL5624M0SAW1G](#) [ATP16SL1A00M0SA04G](#)
[ATP16DL5A03B4SA04G](#) [ATP16-HN](#) [ATP16-OR](#) [ATP16DL5206B3SA04G](#) [ATP16DL5000B3SA04G](#)
[ATP16SL5R03M4SA04G](#) [ATP16DL5603B4SA04G](#) [ATP16DL1000B3SA04G](#) [ATP16DL5606B3SA04G](#)
[ATP16SL1612M4SA04G](#) [ATP16DL1000B4SA04G](#) [ATP16DL5306B4SA04G](#)