

LIGHT DUTY SERIES TOGGLE SWITCHES



5558

Description

Littelfuse Toggle Switches are designed for universal applications within harsh environments. Their mounting, body, and actuator features are designed for ease-of-use and extended product lifecycle.

The Light Duty series is meant to be mounted in virtually any environment and for any application.

Features and Benefits

- Silver contacts for corrosion resistance.

Applications

- Construction Equipment
- Agricultural Equipment
- Material Handling Equipment
- Commercial Vehicles

Web Resources

Download 2D print and technical resources at:
littelfuse.com/LightDutyToggles

Ordering Information

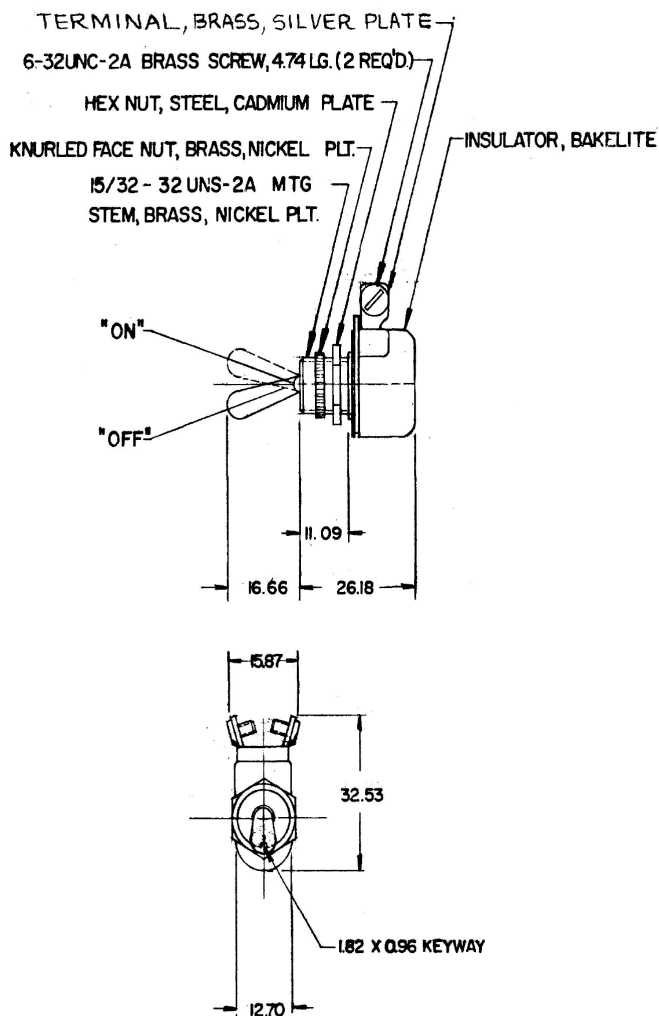
PART NUMBER	DESCRIPTION
5558 *	Light Duty Toggle Switch

* Box and Retail Blister Pack Available

Specifications Overview

Mounting:	Nickel Plated Brass Face Nut through 15/32 (11.90mm) Panel Hole
Housing:	Black Bakelite with Plated Steel Cap
Circuitry:	Single Pole, Single Throw
Voltage Rating:	10A @ 12V DC
Actuator:	Standard handle: 17.46mm long
Positions:	On-Off (Up-Down)
Termination:	2 Screws

Dimensions in mm



Mouser Electronics

Authorized Distributor

Click to View Pricing, Inventory, Delivery & Lifecycle Information:

Littelfuse:

[5558](#) [5570](#) [55013](#) [M-584](#) [M-493](#)