

ENGINE START STOP PUSH BUTTON SWITCHES



90047

Description

Littelfuse Push Pull Switches are designed for universal applications within harsh environments. Their mounting, body, and actuator features are designed for ease-of-use and extended product lifecycle.

The Engine Start-Stop Push Button Series provides temporary circuit closure to engage engine features. Interface designed for impact-resistance to ensure deliberate actuation.

Features and Benefits

- Silver Contacts for Corrosion Resistance
- Actuator resistant to oil, water and other liquids

Applications

- Construction Equipment
- Agricultural Equipment
- Material Handling Equipment
- Transit and Commercial Vehicles

Ordering Information

PART NUMBER	DESCRIPTION	ACTUATOR	POSITIONS	TERMINATION
90047 *	Heavy Duty Engine Start-Stop Push Button	Black Button (Push, White 'ENGINE START' Imprint)	2 Positions: Out (Open) - In (Momentarily Closed, Spring Return to Out)	2 Screws

* Box and Retail Blister Pack Available



Visit Littelfuse.com for the most up-to-date product information. Littelfuse products are designed for specific applications and should not be used for any purpose (including, without limitation, automotive applications) not expressly set forth in applicable Littelfuse product documentation. Warranties granted by Littelfuse shall be deemed void for products used for any purpose not expressly set forth in applicable Littelfuse product documentation. Littelfuse shall not be liable for any claims or damages arising out of products used in applications not expressly intended by Littelfuse as set forth in applicable Littelfuse product documentation.

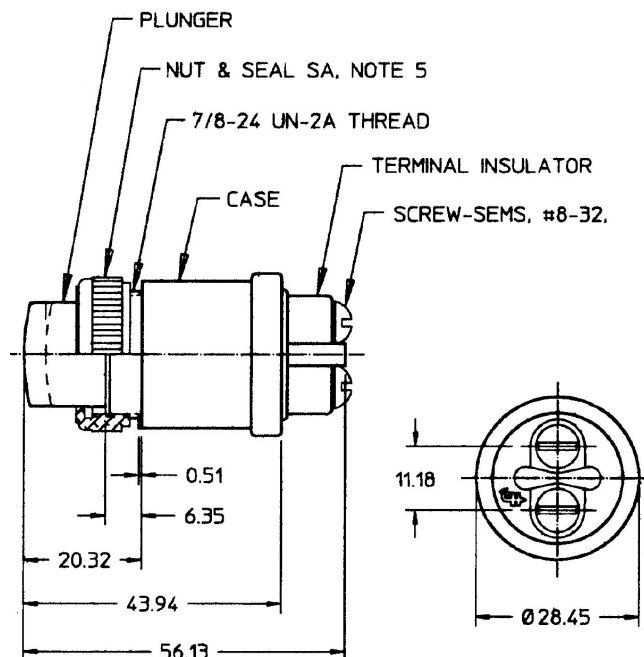
Specifications Overview

Positions:	2 Positions: Out (Open) - In (Momentarily Closed, Spring Return to Out)
Housing:	Diecast Zinc
Circuitry:	SPST
Voltage Rating	35A at 12V DC
Mounting:	Body through 0.04"-0.10" (1.0mm-2.5mm) Panel Hole

Web Resources

Download 2D print and technical resources at:
littelfuse.com/StartStopButtons

Dimensions in mm



Mouser Electronics

Authorized Distributor

Click to View Pricing, Inventory, Delivery & Lifecycle Information:

Littelfuse:

[90047](#) [90048-01](#) [90048](#) [90047-01](#)