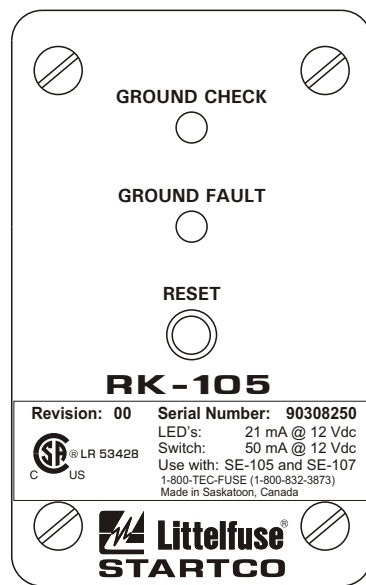
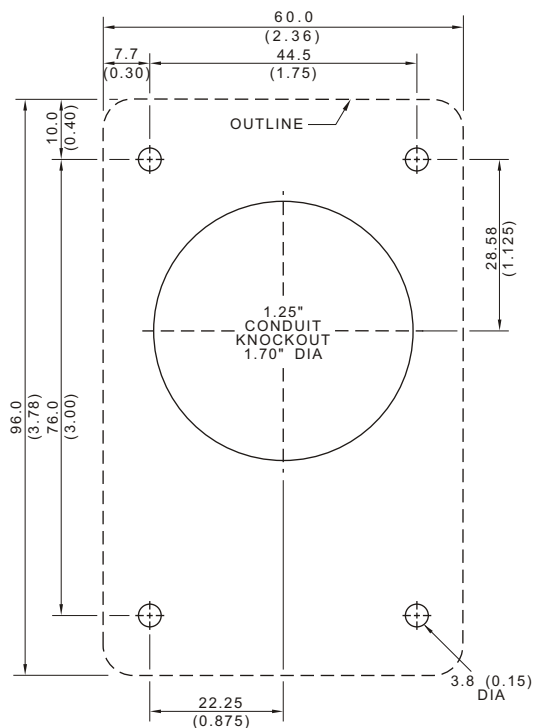


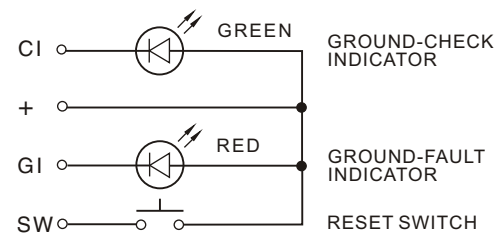
SIDE VIEW



FRONT VIEW



MOUNTING DETAIL



INTERNAL SCHEMATIC

NOTES:

1. TERMINAL MARKINGS CORRESPOND ON TERMINAL MARKINGS ON THE SE-105/SE-107.
2. SEE SE-105 OR SE-107 MANUAL FOR MORE INFORMATION.
3. MANUALS ARE AVAILABLE AT www.startco.ca

RK-105

REMOTE INDICATION-AND-RESET ASSEMBLY FOR SE-105/SE-107
MOUNTING SCREWS, LOCKNUTS AND
DRILLING TEMPLATE ARE INCLUDED.

LED'S: 21 mA @ 12 Vdc
RESET SWITCH: 50 mA @ 12 Vdc



Littelfuse
STARTCO
1-800-TEC-FUSE (1-800-832-3873)
Made in Saskatoon, Canada



LISTED
Ground Fault Sensing
and Relaying Equipment
4FX9 E340889

Copyright © 2011
Printed in Canada
181011

NOTES:

1. DIMENSIONS IN MILLIMETRES (INCHES).
2. NEMA 1.

Mouser Electronics

Authorized Distributor

Click to View Pricing, Inventory, Delivery & Lifecycle Information:

Littelfuse:

[RK-105](#) [RK-102](#) [RK-332](#) [RK-132](#) [RK-311R-00](#) [RK-311R-01](#) [RK-311G-01](#) [RK-325I](#) [RK-13](#) [RK-105I](#) [RK-325](#) [RK-311G-00](#) [RK-302](#)