

# L17T SERIES TELCOM POWER FUSE

170 VDC • Current-Limiting • 70-1200 A



## Description

Specifically designed for short-circuit protection of telecommunications circuits, the Littelfuse L17T series fuses provide reliable protection of sensitive DC power distribution systems. Constructed with silver plated elements for low  $I^2t$  and peak let-through, these advanced fuses virtually eliminate equipment damage due to surges and spikes. The L17T series fuse unique element geometry also provides cooler running temperatures, helping to minimize heat within enclosures.

## Features

- Low  $I^2t$
- Extremely current-limiting
- Low operating temperature
- 170 VDC rating

## Specifications

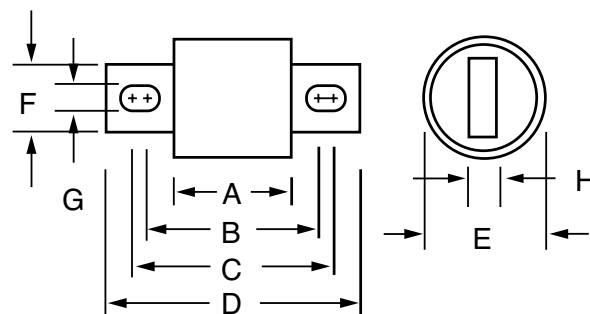
<b>Voltage Rating</b>	170 VDC
<b>Interrupting Rating</b>	100 kA
<b>Ampere Range</b>	70 – 1200 A
<b>Approvals</b>	UL Recognized (File: E71611) CSA Recognized (File: LR29862)

## Ordering Information

AMPERE RATINGS						
70	125	200	300	450	800	1100
90	150	225	350	500	900	1200
100	175	250	400	600	1000	—

SERIES	VOLTAGE	AMPERAGE	CATALOG NUMBER	ORDERING NUMBER
L17T	170	1200	L17T 1200	L17T1200V

## Dimensions Inches (mm)



AMPERE RATING	DIMENSIONS INCHES (mm)							
	A	B	C	D	E	F	G	H
70 – 250	1 5/32 (29.4)	1 7/8 (47.6)	2 3/16 (55.6)	2 21/32 (67.5)	1 (25.4)	7/8 (22.2)	5/16 (7.9)	3/16 (4.8)
300 – 800	1 1/4 (31.8)	1 15/16 (49.2)	2 9/16 (65.1)	3 1/2 (88.9)	1 1/2 (38.1)	1 (25.4)	13/32 (10.3)	1/4 (6.35)
900 – 1200	1 11/32 (34.0)	—	—	4 1/16 (103.1)	—	1 1/2 (38.1)	—	1/4 (6.35)

## Web Resources

For additional information, visit:

**[Littelfuse.com/l17t](http://Littelfuse.com/l17t)**

## Recommended Fuse Holders

LTFD 6001 and LTFD 1200 series, visit:

**[Littelfuse.com/ltfld](http://Littelfuse.com/ltfld)**

# Mouser Electronics

Authorized Distributor

Click to View Pricing, Inventory, Delivery & Lifecycle Information:

## Littelfuse:

[L17T250.T](#) [L17T900.V](#) [L17T300.V](#) [L17T225.T](#) [L17T500.V](#) [L17T100.T](#) [L17T090.T](#) [L17T800.V](#) [L17T450.V](#)  
[L17T200.T](#) [L17T600.V](#) [L17T1200V](#) [L17T150.T](#) [L17T175.T](#) [L17T125.T](#) [L17T070.T](#) [L17T1000V](#) [L17T400.V](#)  
[L17T350.V](#) [L17T1100V](#)