

POWR-GARD® Fuse Datasheet

CNN_E / CNN / CNL SERIES LIFT TRUCK FUSES

32/48/80 V dc • Fast-Acting and Very Fast-Acting • 10–800 A



Description

CNN_E fuses are rated for applications up to 80 V dc. As fork lift trucks and electrical vehicle system voltages increase, circuit protection needs to be rated higher than the standard CNN products to handle the increased voltage. The CNN_E is considered very fast-acting for quicker reaction time.

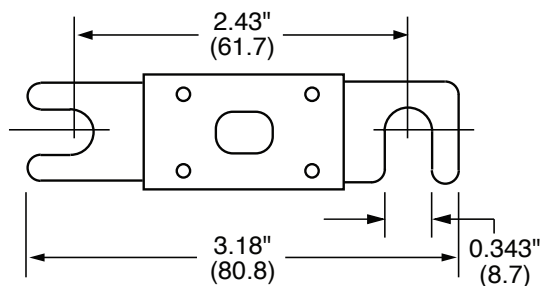
Features/Benefits

- Up to 80 V dc protection
- Window shows fuse status
- Up to 2,700 A interrupting rating
- Compact size saves space
- RoHS compliant and lead (Pb) free

Applications

- Lift trucks
- Scissor lifts
- Pallet movers
- Low voltage battery powered equipment

Dimensions inches (mm)



Specifications

Voltage Ratings	CNN_E: 80 V dc / 125 V ac CNN: 48 V dc / 125 V ac CNL: 32 V dc / 32 V ac
Ampere Ratings	10 – 800 A*
Max. Interrupting Rating	CNN_E: 2,700 A CNN/CNL: 2,500 A
Approval	CNN_E: cURus (File E71611) CNN/CNL: UR (File E71611)
Environmental	RoHS Compliant, Lead (Pb) Free
Country of Origin	CNN_E: Mexico CNN/CNL: China

*See ordering information table for available amperages by series

Ordering Information

AMPERE RATINGS CNN_E (80 V DC)					
35	80	150	250	350	700
40	90	175	275	400	800
50	100	200	300	500	—
60	125	225	325	600	—

AMPERE RATINGS CNN (48 V DC)					
10	60	125	225	325	600
35	80	150	250	350	700
40	90	175	275	400	800
50	100	200	300	500	—

AMPERE RATINGS CNL (32 V CDC)					
35	80	150	250	350	—
40	100	175	275	400	—
50	125	200	300	500	—
60	130	225	325	—	—

SERIES	TYPE	VOLT DC	AMP	CATALOG NUMBER	ORDERING NUMBER
CNN_E	VERY FAST-ACTING	80	200	CNN200E	0CNN200E.V
CNN	VERY FAST-ACTING	48	125	CNN125	0CNN125.V
CNL	FAST-ACTING	32	50	CNL050	0CNL050.V

Web Resources

80 V dc: Littelfuse.com/cnne
 48 V dc: Littelfuse.com/cnn
 32 V dc: Littelfuse.com/cnl

Recommended Fuse Block

LFFB0003Z - Littelfuse.com/lffb

Disclaimer Notice – Information furnished is believed to be accurate and reliable. However, users should independently evaluate the suitability of and test each product selected for their own applications. Littelfuse products are not designed for, and may not be used in, all applications. Read complete Disclaimer Notice at www.littelfuse.com/product-disclaimer.

Mouser Electronics

Authorized Distributor

Click to View Pricing, Inventory, Delivery & Lifecycle Information:

Littelfuse:

[0CNL325.V](#) [0CNL150.V](#) [0CNN060.V](#) [0CNN225.V](#) [0CNL080.V](#) [0CNL200.V](#) [0CNN500.V](#) [0CNL225.V](#) [0CNN175.V](#)
[0CNL035.V](#) [0CNN800.V](#) [0CNL040.V](#) [0CNN600.V](#) [0CNL400.V](#) [0CNN275.V](#) [0CNL175.V](#) [0CNL050.V](#) [0CNN200.V](#)
[0CNN035.V](#) [0CNN080.V](#) [0CNL100.V](#) [0CNN150.V](#) [0CNN350.V](#) [0CNL300.V](#) [0CNN090.V](#) [0CNN100.V](#) [0CNL275.V](#)
[0CNL250.V](#) [0CNN050.V](#) [0CNL350.V](#) [0CNL500.V](#) [0CNN300.V](#) [0CNN400.V](#) [0CNN325.V](#) [0CNL130.V](#) [0CNN700.V](#)
[0CNN010.V](#) [0CNN125.V](#) [0CNN250.V](#) [0CNN040.V](#) [0CNL125.V](#) [0CNL060.V](#)