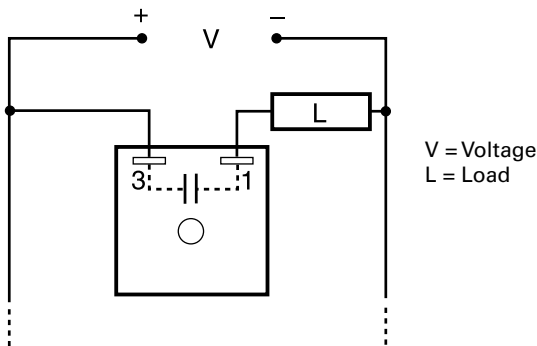


FS300 SERIES



Wiring Diagram



Ordering Information

| MODEL | INPUT | MAXIMUM CURRENT LOAD |
|-------|-----------------|----------------------|
| FS312 | 12VDC \pm 20% | 2.5A |
| FS324 | 24VDC \pm 20% | 1.5A |

If you don't find the part you need, call us for a custom product 800-843-8848

Description

The FS300 Series of solid-state flashers were specifically designed to operate lamp loads. Their two-terminal series connection feature makes installation easy. The high immunity to line noise and transients makes the FS300 Series ideal for moving vehicle applications. All solid-state construction means reliability and long life. The FS300 Series offers a factory fixed flash rate of 75 FPM or may be ordered with a fixed, custom flash rate ranging from 60 to 150 FPM.

Operation

Upon application of input voltage, the T2 OFF time begins. At the end of the OFF time, the T1 ON time begins and the load energizes. At the end of T1, T2 begins and the load de-energizes. This cycle repeats until input voltage is removed.

Reset: Removing input voltage resets the output and the sequence to T2.

Features & Benefits

| FEATURES | BENEFITS |
|--|--|
| Totally solid state and encapsulated | No moving parts to arc and wear out over time and encapsulated to protect against shock, vibration, and humidity |
| High immunity to line noise and transients | Designed specifically for moving vehicle applications |
| High surge current capability (10 times steady state) | Direct operation of incandescent lamp loads |
| Two terminal series connection | Provides quick and easy installation for new or existing applications |

Accessories



P1023-6 Mounting bracket

The 90° orientation of mounting slots makes installation/removal of modules quick and easy.



P1015-64 (AWG 14/16)

Female Quick Connect

These 0.25 in. (6.35 mm) female terminals are constructed with an insulator barrel to provide strain relief.



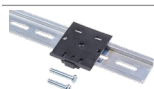
P1015-18 Quick Connect to Screw Adapter

Screw adapter terminal designed for use with all modules with 0.25 in. (6.35 mm) male quick connect terminals.



C103PM (AL) DIN Rail

35 mm aluminum DIN rail available in a 36 in. (91.4 cm) length.



P1023-20 DIN Rail Adapter

Allows module to be mounted on a 35 mm DIN type rail with two #10 screws.

FS300 SERIES

Specifications

Technical Data

Operation

OFF/ON recycling solid-state flasher
(continuous duty)

Flash Rate

Fixed at 75 FPM $\pm 10\%$

Custom Flash Rates

60 - 150 FPM

ON/OFF Ratio

$\approx 50\%$

Input

Voltage

12, 24, 36, 48, 72, & 110VDC

Output

Load Type

Incandescent or resistive

Maximum Load Rating

0.25 - 2.5A steady state

Inrush

10 times steady state current

Mechanical

Mounting

Surface mount with one #10 (M5 x 0.8) screw

Dimensions

H 50.8 mm (2"); **W** 50.8 mm (2");

D 30.7 mm (1.21")

Termination

0.25 in. (6.35 mm) male quick connect terminals

Protection

Circuitry

Encapsulated

Environmental

Operating/Storage

Temperature

-20° to 60°C / -40° to 85°C

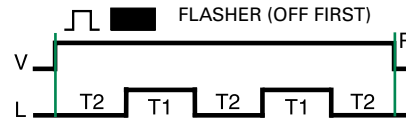
Humidity

95% relative, non-condensing

Weight

≈ 2.2 oz (62 g)

Flasher Function Diagram



V = Voltage
R = Reset
L = Load
T1 = ONTime
T2 = OFFTime
T1 \approx T2

Mouser Electronics

Authorized Distributor

Click to View Pricing, Inventory, Delivery & Lifecycle Information:

[Littelfuse:](#)

[FS312](#) [FS324](#) [FS336](#) [FS390](#)