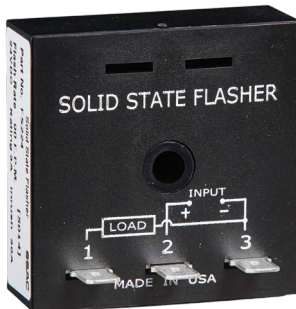
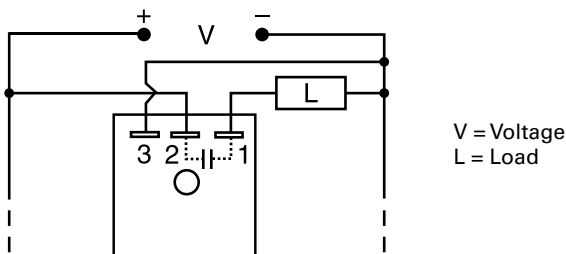


FS200 SERIES



Wiring Diagram



Description

The FS200 Series may be used to control inductive, incandescent, or resistive loads. Factory fixed flash rate of 45 or 90 FPM or may be ordered with a fixed custom flash rate ranging from 10 to 180 FPM. Encapsulation provides protection against shock, vibration, and humidity. Uniform performance, high inrush current capability, and low RFI, make this series ideal for general industrial applications.

Operation

Upon application of input voltage, the T2 OFF time begins. At the end of the OFF time, the T1 ON time begins and the load energizes. At the end of T1, T2 begins and the load de-energizes. This cycle repeats until input voltage is removed.

Reset: Removing input voltage resets the output and the sequence to T2.

Features & Benefits

FEATURES	BENEFITS
3A steady, 30A inrush, SPST output contact	Provides direct control of inductive, incandescent, or resistive loads
Totally solid state and encapsulated	No moving parts to arc and wear out over time and encapsulated to protect against shock, vibration, and humidity
High inrush current capability and low RFI	Ideal for general industrial applications

Accessories



P1023-6 Mounting bracket

The 90° orientation of mounting slots makes installation/removal of modules quick and easy.



P1015-64 (AWG 14/16)

Female Quick Connect

These 0.25 in. (6.35 mm) female terminals are constructed with an insulator barrel to provide strain relief.



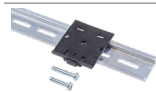
P1015-18 Quick Connect to Screw Adapter

Screw adapter terminal designed for use with all modules with 0.25 in. (6.35 mm) male quick connect terminals.



C103PM (AL) DIN Rail

35 mm aluminum DIN rail available in a 36 in. (91.4 cm) length.



P1023-20 DIN Rail Adapter

Allows module to be mounted on a 35 mm DIN type rail with two #10 screws.

Ordering Information

MODEL	INPUT	RATING	FLASH RATE
FS219-45	12VDC \pm 20%	3A	45 FPM
FS224	24VDC \pm 20%	3A	90 FPM

If you don't find the part you need, call us for a custom product 800-843-8848

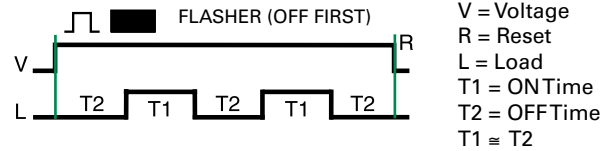
FS200 SERIES

Specifications

Technical Data

Operation	OFF/ON solid-state flasher (continuous duty)
Flash Rate	Fixed at 90 FPM $\pm 10\%$
Custom Flash Rate	10 - 180 FPM
ON/OFF Ratio	$\approx 50\%$
Input	
Voltage	12, 24, 36, 48, or 110VDC
Output	
Load Type	Inductive, resistive, or incandescent
Maximum Load Rating	0.25 - 3A steady state
OFF State Leakage Current	
12 & 24VDC	$\leq 250 \mu\text{A}$
Inrush	10 times steady state current
Mechanical	
Mounting	Surface mount with one #10 (M5 x 0.8) screw
Dimensions	H 50.8 mm (2"); W 50.8 mm (2"); D 30.7 mm (1.21")
Termination	0.25 in. (6.35 mm) male quick connect terminals
Protection	
Circuitry	Encapsulated
Environmental	
Operating/Storage Temperature	-20° to 60°C / -40° to 85°C
Weight	$\approx 2.2 \text{ oz}$ (62 g)

Flasher Function Diagram



Mouser Electronics

Authorized Distributor

Click to View Pricing, Inventory, Delivery & Lifecycle Information:

[Littelfuse:](#)

[FS224](#) [FS219-45](#)