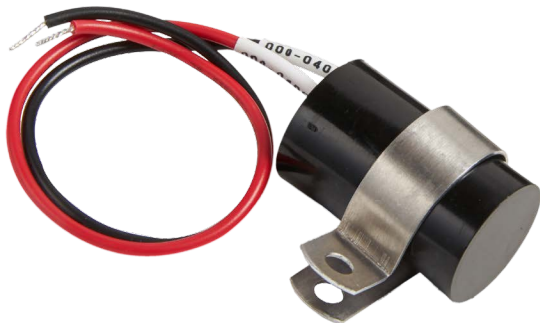


FS100 SERIES

Low Current Flasher



Description

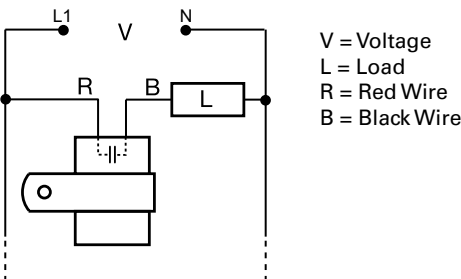
The FS100 Series (low current) may be used to control inductive, incandescent or resistive loads. This series offers a 1A (fullwave) or a 2A (halfwave) steady state, 10A inrush solid-state output and may be ordered with an input voltage of 24 or 120VAC. The FS100 Series offers a factory fixed flash rate of 75 FPM or may be ordered with a fixed, custom flash rate ranging from 45 to 150 FPM. Ideal for OEM applications where cost is a factor.

Operation

Upon application of input voltage, the T2 OFF time begins. At the end of the OFF time, the T1 ON time begins and the load energizes. At the end of T1, T2 begins and the load de-energizes. This cycle repeats until input voltage is removed.

Reset: Removing input voltage resets the output and the sequence to T2.

Wiring Diagram



Features & Benefits

FEATURES	BENEFITS
Compact Size: 38 x 23.9mm (1.5" x 0.94")	Ideal for OEM applications
Custom Flash Rates Available	Tailor to specific application: custom rates range from 45 to 150 FPM

Accessories



P1023-2 "P" Clamp
Mounting Bracket Alum. 15/16

Ordering Information

MODEL	INPUT VAC	OUTPUT RATING A	OUTPUT TYPE AC	LOAD TYPE	FLASH RATE
FS126	120	1	Fullwave	Incandescent & Resistive	75 FPM
FS126-45	120	1	Fullwave	Incandescent & Resistive	45 FPM
FS126-60	120	1	Fullwave	Incandescent & Resistive	60 FPM
FS126RC	120	1	Fullwave	Incandescent, Resistive, & Inductive	75 FPM
FS126RC-45	120	1	Fullwave	Incandescent, Resistive, & Inductive	45 FPM
FS127	120	2	Halfwave	Incandescent & Resistive	75 FPM
FS146	24	1	Fullwave	Incandescent & Resistive	75 FPM
FS146RC	24	1	Fullwave	Incandescent, Resistive, & Inductive	75 FPM

If you don't find the part you need, call us for a custom product 800-843-8848

Flashers and Tower Lighting Controls

Flashers

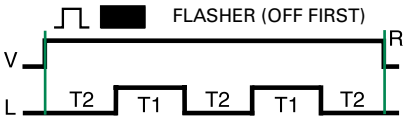
FS100 SERIES

Specifications

Technical Data

Operation	OFF/ON solid-state flasher (continuous duty)
Flash Rate	Factory fixed at 75 FPM $\pm 20\%$
Custom Flash Rates Available	From 45-150 FPM $\pm 20\%$
ON/OFF Ratio	$\approx 50\%$
Input	
Voltage	24, 120VAC, $\pm 15\%$
AC Line Frequency	50/60Hz
Output	
Load Type	Fullwave AC or Halfwave rectified AC Incandescent, resistive, or inductive (Choose RC suffix for inductive loads)
Maximum Load Rating	Fullwave: 1A steady state Halfwave: 2A steady state 10A
Inrush	
Mechanical	
Mounting	Removable mounting bracket, use one #8 (M4 x 0.7) screw
Connection/Wires	18 AWG (0.82mm ²) wires 6 in. (15.2cm)
Dimensions	H 38.1 mm (1.5"); W 23.9 mm (0.94")
Protection	
Circuitry	Encapsulated
Environmental	
Operating/Storage	
Temperature	-20° to 60°C / -40° to 85°C
Humidity	95% relative, non-condensing
Weight	≈ 1.1 oz (31 g)

Flasher Function Diagram



V = Voltage
 R = Reset
 L = Load
 T1 = ONTime
 T2 = OFFTime
 T1 \approx T2

Mouser Electronics

Authorized Distributor

Click to View Pricing, Inventory, Delivery & Lifecycle Information:

[Littelfuse:](#)

[FS127](#) [FS126RC](#) [FS126](#) [FS146](#) [FS146RC](#) [FS126-45](#) [FS126-60](#) [FS126RC-45](#)