

DIGITAST

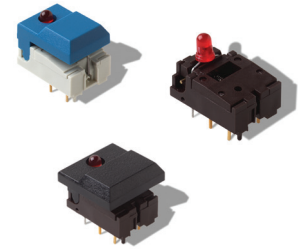
Microminiature SPDT, Key Switches

Features/Benefits

- High reliability/long life
- Designed for low level switching
- Ready to implement on PCB
- Latching function available
- Several button options
- RoHS compliant and compatible

Typical Applications

- Medical
- Instrumentation
- Industrial electronics
- Audio electronics



Construction

FUNCTION: momentary or push-push
CONTACT ARRANGEMENT: 1 change over contact SPDT, NO
MODE OF SWITCHING: Non-shorting
DISTANCE BETWEEN BUTTON CENTERS:
HORIZONTAL MINIMUM: 12,7 (0.500) or 17,78 (0.700)
VERTICAL MINIMUM: 17,78 (0.700)
TERMINALS: PC pins
MOUNTING: Soldering, centering pins

Mechanical

TOTAL TRAVEL: ≤ 3 (.0018)
SWITCHING TRAVEL: 1,5 (0.0591)
LATCHING TRAVEL: 1,8 (0.0709)
OPERATING FORCE: 1.5 +/- 0.5 N (150 +/- 50 grams)

Electrical

SWITCHING POWER MAX.: 240 mW DC
SWITCHING VOLTAGE MAX.: 24 V DC
SWITCHING CURRENT MAX.: 10 mA DC
CARRYING CURRENT AT 20°C (push-push version): 100 mA
DIELECTRIC STRENGTH (50 Hz, 1 min): 500 V
OPERATING LIFE with or without max. switching power
Momentary: $\geq 5 \times 10^6$ operations
Push-push: $\geq 5 \times 10^5$ operations
CONTACT RESISTANCE: Initial ≤ 50 m Ω
After 5×10^6 operations: ≤ 100 m Ω
INSULATION RESISTANCE: $\geq 10^{10}$ Ω
CAPACITANCE at f= 10 kHz: ≤ 0.8 pF
BOUNCE TIME: ≤ 2.5 ms
Operating speed 400 mm/s (15.75/s)

Process

SOLDERABILITY:
Wave soldering, compatible with lead free soldering profile
Hand soldering, 350°C for 3 seconds


Environmental

OPERATING TEMPERATURE: -25°C to 85°C.


How To Order

Our easy build-a-switch concept allows you to mix and match options to create the switch you need. To order, select desired option from each category and place it in the appropriate box. **Some of the configurations may not be available or could require some development.**

Switch

<div>Reference SER BK AU OA</div> 		<div>Series</div> <div>SER Narrow button SET Wide button SERU Switch body only (no button)</div>		<div>LED</div> <div>NONE No LED L 1 LED 2L 2 LED's</div>		<div>Button Color**</div> <div>None (SERU) BK Black GY Gray WH White RD Red BU Blue</div>		<div>1st LED Color***</div> <div>NONE No LED RD Red YE Yellow GN Green</div>		<div>LED Spacing*</div> <div>NONE Narrow LED Spacing (TYP Europe) 7.62 Wide LED Spacing (TYP No. America)</div>		<div>2nd LED Color***</div> <div>NONE No LED RD Red YE Yellow GN Green</div>		<div>Function</div> <div>EE Latching OA Non-latching</div>		<div>Contact Material</div> <div>AU Gold</div>		<div>Body Color</div> <div>NONE White (STD) BRN Brown</div>	
---	--	--	--	--	--	---	--	--	--	---	--	--	--	--	--	--	--	---	--

Button

<div>Reference SRK BK</div> 		<div>Button Style</div> <div>SR Narrow ST Wide</div>		<div>LED Holes</div> <div>NONE No LED holes L 1 LED hole 2L 2 LED holes</div>		<div>Button Color**</div> <div>BK Black GY Gray WH White RD Red BU Blue</div>		<div>Latching</div> <div>None For use with momentary switch EE With "EE" staple for latching</div>	
---	--	--	--	---	--	---	--	--	--

* LED spacing only applies when 1 LED requested

** Additional button colors available by request

*** Additional LED colors available by request including Bi color configurations



Dimensions are shown: mm
Specifications and dimensions subject to change



D

Key Switches

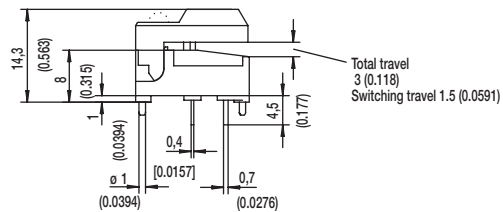
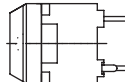
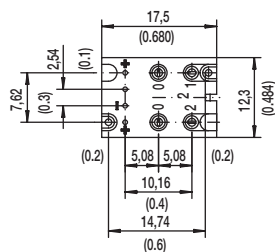
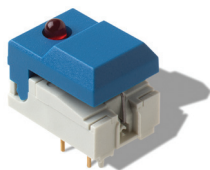
DIGITAST

Microminiature SPDT, Key Switches

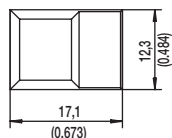
DESIGNATION



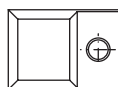
SER NARROW BUTTON



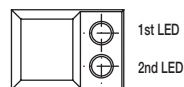
SER



SERL

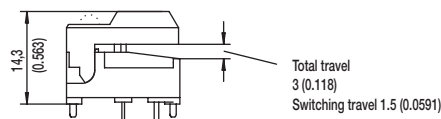
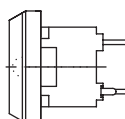
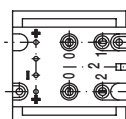
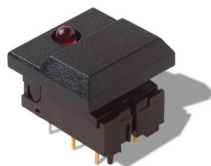


SER2L

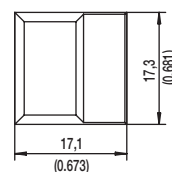


1st LED
2nd LED

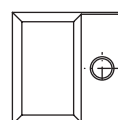
SET WIDE BUTTON



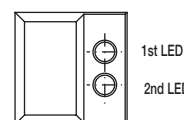
SET



SETL

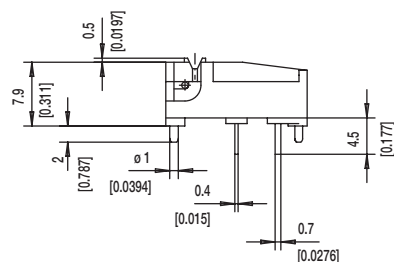
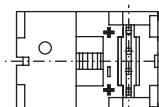
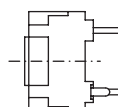
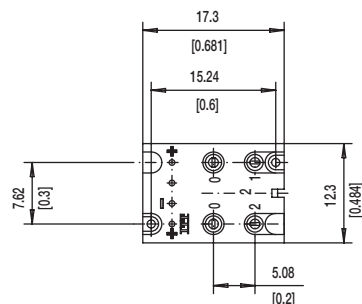


SET2L



1st LED
2nd LED

SERU NO BUTTON



D

Key Switches



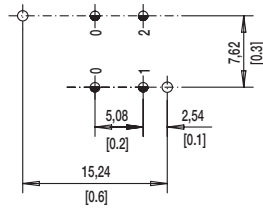
First Angle
Projection

Dimensions are shown: mm
Specifications and dimensions subject to change

DIGITAST Microminiature SPDT, Key Switches

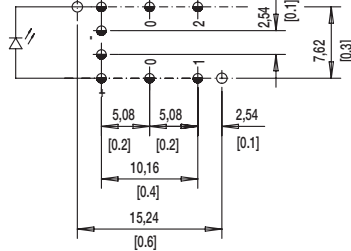
LED

NONE NO LED

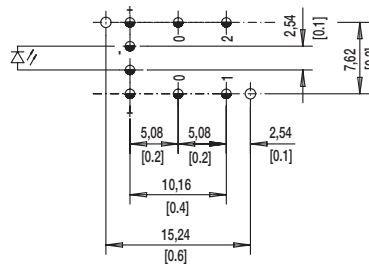


L 1 LEDS

7.62 mm Spacing (TYP No. America)

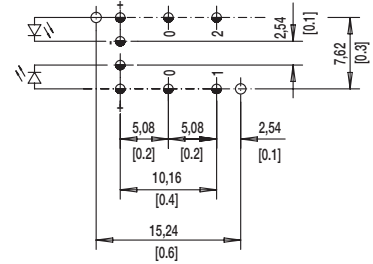


NARROW SPACING (TYP EUROPE)



TOP VIEW OF PCB

2L 2 LEDS



⌀ 1.0±0.1 (0.0394±0.00349)

⌀ 1.1±0.05 (0.0433±0.00197)

BUTTON COLOR

BK BLACK

GY GRAY

Other button colors available by request [red (RD), green (GN), white (WH), yellow (YE), blue (BU), orange (OG)].

LED COLOR

OPTION CODE	COLOR
NONE	Models without LED
RD	Red
GN	Green
YE	Yellow

CONTACT MATERIAL

OPTION CODE	MATERIAL
AU	Gold

FUNCTION

OPTION CODE	COLOR	SCHEMATIC
OA	Momentary	
EE	Push-Push	



First Angle
Projection

Mouser Electronics

Authorized Distributor

Click to View Pricing, Inventory, Delivery & Lifecycle Information:

[C&K Switches:](#)

[SRKL BK](#) [STK2LGY](#) [SRKLBK](#) [719-0102-000](#) [SERLBKRDAUOA](#)