

NEW

# PTS125 Series 12 mm Tact Switches



## Features/Benefits

- THT and SMT terminations
- Various heights
- Snap fit actuator option

## Typical Applications

- Consumer products
- Instrumentation
- Computer products
- Industrial

## Specification

FUNCTION: Momentary action  
 CONTACT ARRANGEMENT: 1 make contact SPST, N.O.  
 TERMINALS: PC pins for THT and G type for SMT  
 TRAVEL: 130 gf 0.20 mm  
 180 gf 0.25 mm  
 250 gf 0.30 mm  
 350 gf 0.35 mm

## Mechanical

OPERATING FORCE: 130 gf, 180 gf, 250 gf, 350 gf

## Electrical

MAX VOLTAGE: 12 VDC  
 MAX CURRENT: 50 mA  
 DIELECTRIC STRENGTH: 250 V AC (1mn)  
 CONTACT RESISTANCE: <100 mΩ  
 INSULATION RESISTANCE: >100MΩ  
 BOUNCE TIME: < 5 ms

### NOTE:

- Specifications listed above are for switches with standard options. For information on specific and custom switches, consult Customer Service Center.
- The PTS series is not certified for using in Automotive application and no PPAP. However, in the case of some automotive accessories and specific applications for 2 and 3 wheeled vehicles the PTS is widely used and very suitable. Please contact your local C&K representative to discuss your application and the best switch solution.

## Environmental

OPERATING TEMPERATURE: -40°C to 85°C

## Process

SOLDERING: This component is suited to the following methods:  
 Infrared reflow soldering in accordance with IEC 61760-1 for SMT version  
 Wave soldering compatible with lead free soldering profile

## Packaging

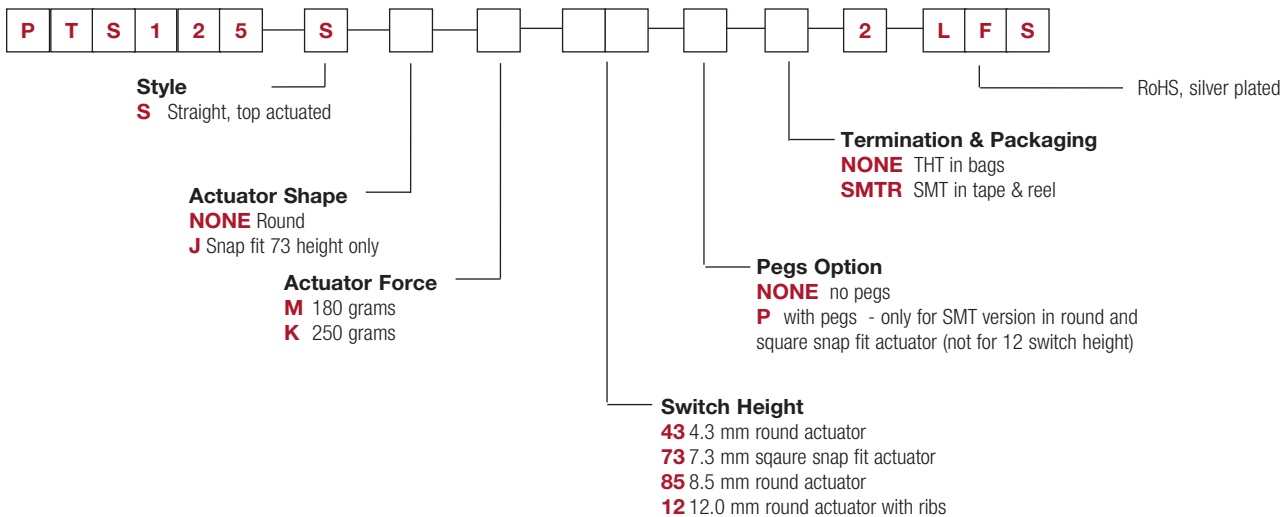
Dimensions of reels according to EIA 481B. External diameter 330 mm.

Soldering Style	Height	Packaging	Parts per Packaging
THT	All heights	Plastic bag	500
SMT	4.3 mm	tape & reel	900
SMT	4.3 mm with pegs	tape & reel	600
SMT	7.3 mm	tape & reel	500
SMT	7.3 mm with pegs	tape & reel	500
SMT	8.5 mm	tape & reel	500
SMT	8.5 mm with pegs	tape & reel	400
SMT	12 mm	tape & reel	250

## How To Order

Our easy build-a-switch concept allows you to mix and match options to create the switch you need. To order, select desired option from each category and place it in the appropriate box.

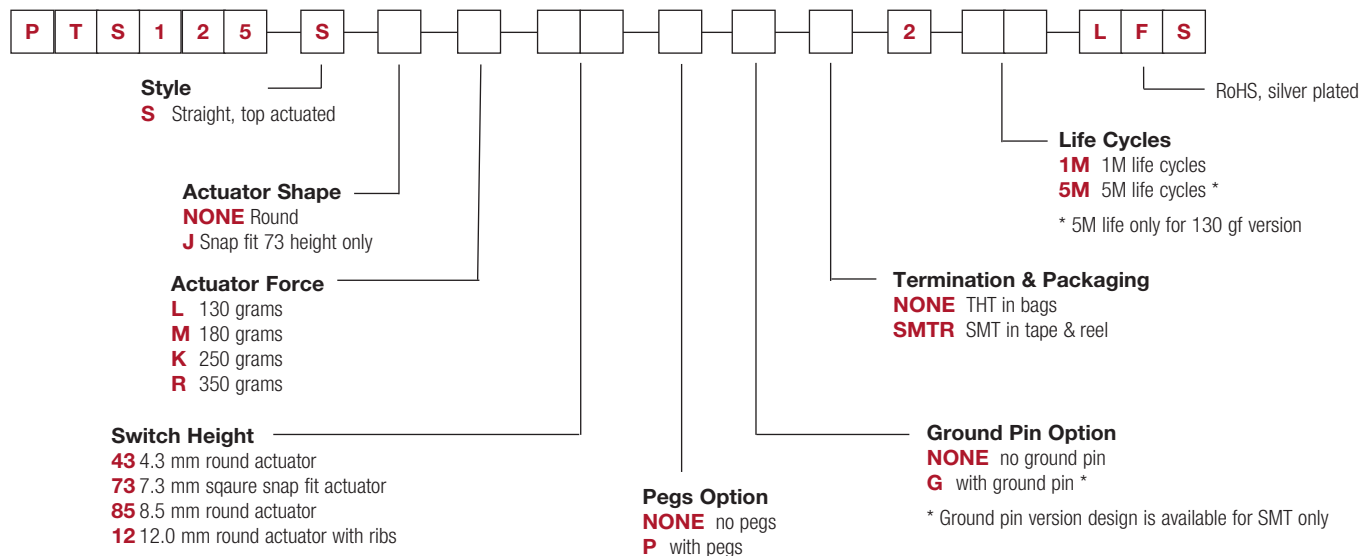
### STANDARD VERSION: 200K LIFE



Other heights with the round actuator are available upon request. Different minimum order quantities than the stand may apply.

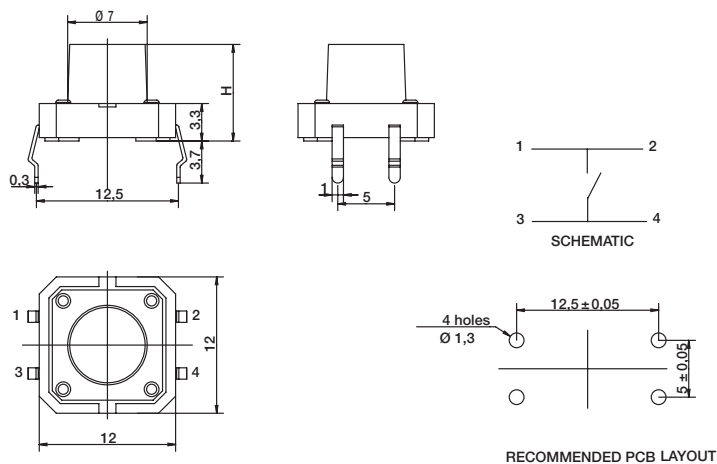


## LONG LIFE VERSION: 1000K TO 5000K LIFE

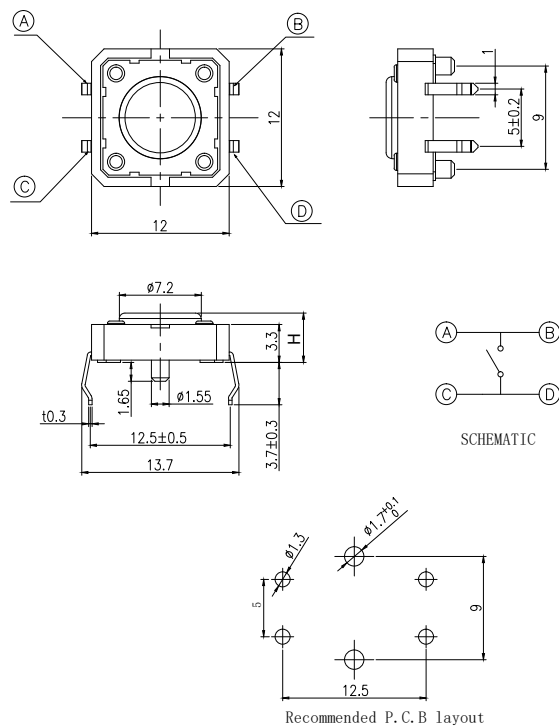


Other heights with the round actuator are available upon request.  
Different minimum order quantities than the stand may apply.

**THT** VERSION WITHOUT PEGS WITH ROUND ACTUATOR  
H= 4.3, 7.3 & 8.5 MM (other height upon request)



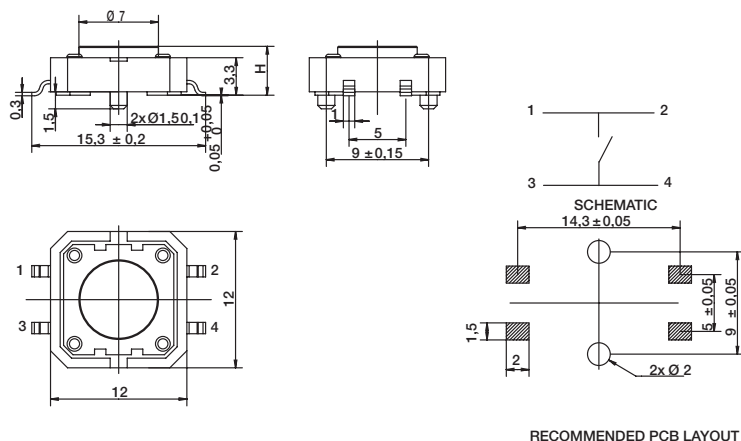
**THT** VERSION WITH PEGS WITH ROUND ACTUATOR  
H= 4.3, 7.3 & 8.5 MM (other height upon request)



# PTS125 Series 12 mm Tact Switches

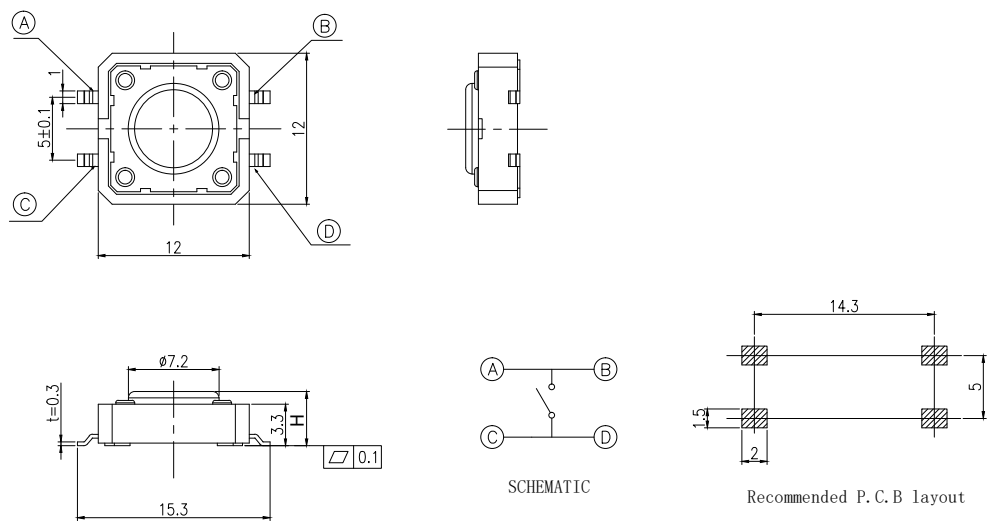
**NEW**

**SMT** VERSION WITH PEGS WITH ROUND ACTUATOR AND PEGS H= 4.3, 7.3 & 8.5 MM (other height upon request)



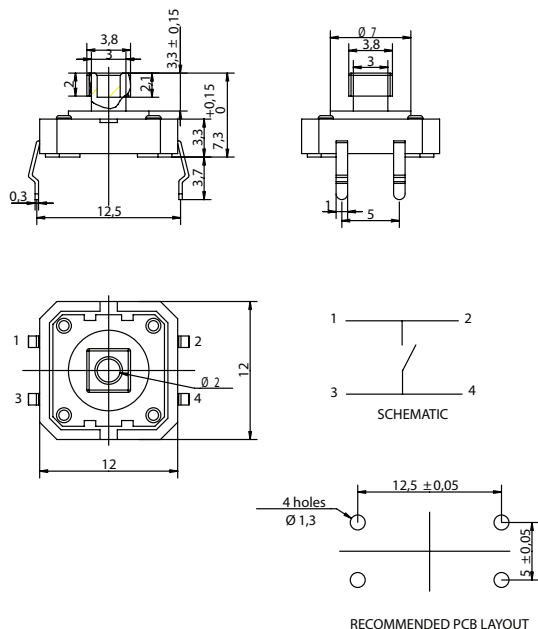
RECOMMENDED PCB LAYOUT

**SMT** VERSION WITHOUT PEGS WITH ROUND ACTUATOR AND PEGS H= 4.3, 7.3 & 8.5 MM (other height upon request)

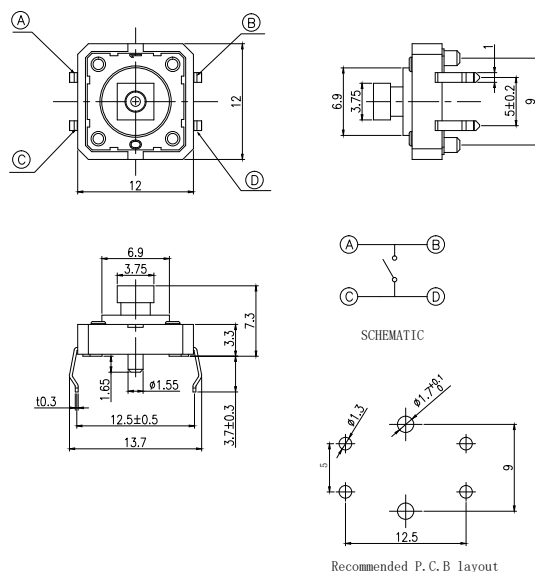


Recommended P.C.B layout

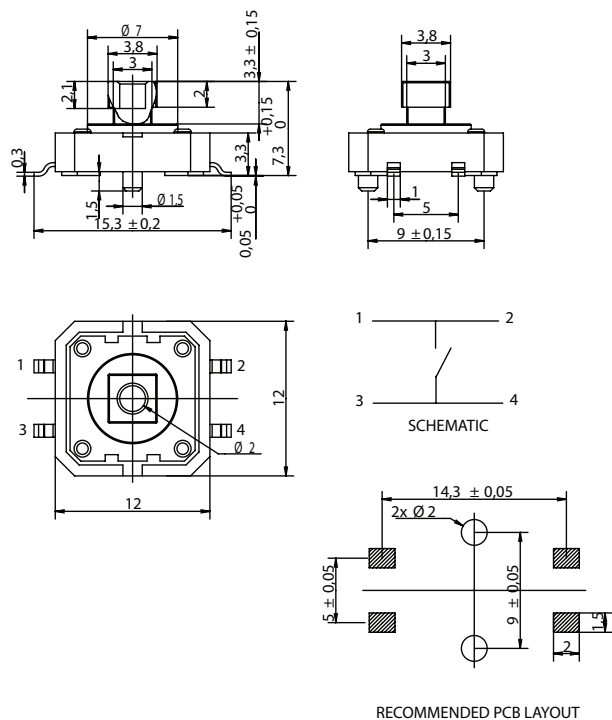
**THT** VERSION WITHOUT PEGS WITH SQUARE SNAP FIT ACTUATOR  
H= 7.3 MM



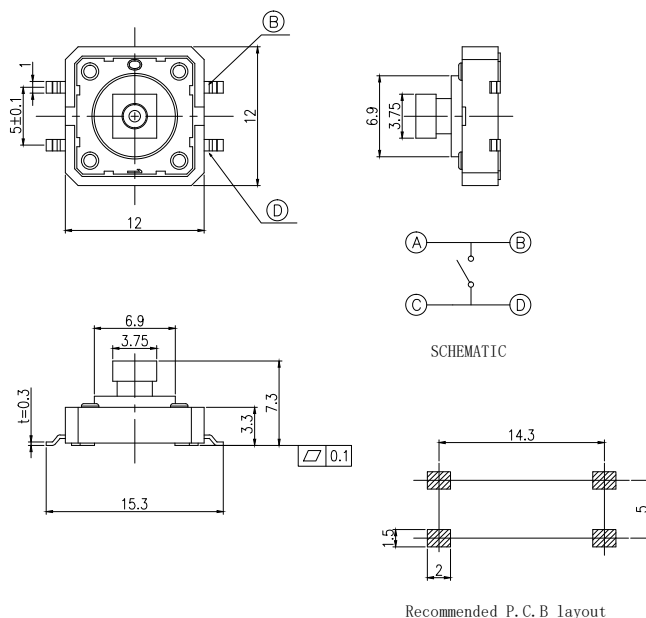
**THT** VERSION WITHOUT PEGS WITH SQUARE SNAP FIT ACTUATOR  
H= 7.3 MM



**SMT** VERSION WITH PEGS WITH SQUARE SNAP FIT ACTUATOR AND PEGS  
H= 7.3 MM



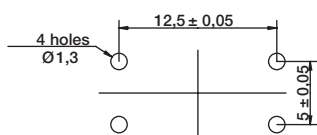
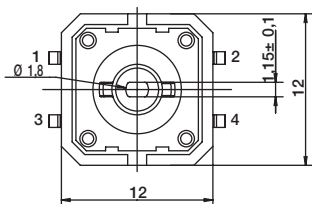
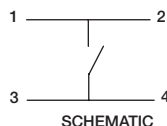
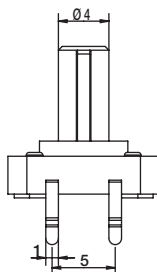
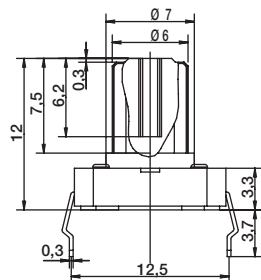
**SMT** VERSION WITHOUT PEGS WITH SQUARE SNAP FIT ACTUATOR AND PEGS  
H= 7.3 MM



# PTS125 Series 12 mm Tact Switches

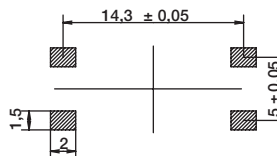
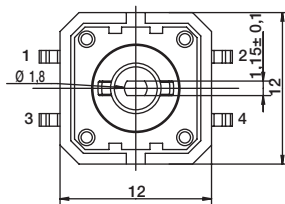
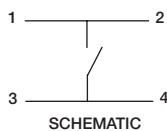
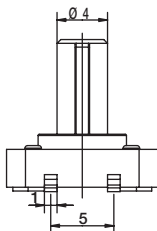
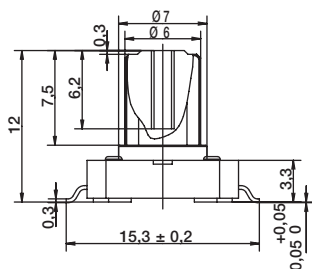
**NEW**

**THT** VERSION WITH ROUND RIBBED ACTUATOR H= 12.0 MM



RECOMMENDED PCB LAYOUT

**SMT** VERSION WITH ROUND RIBBED ACTUATOR H= 12.0 MM



RECOMMENDED PCB LAYOUT



# Mouser Electronics

Authorized Distributor

Click to View Pricing, Inventory, Delivery & Lifecycle Information:

## C&K Switches:

[PTS125SK43](#) [PTS125SM43](#) [PTS125SM85 LFS](#) [PTS125SM43 LFS](#) [PTS125SK85 LFS](#) [PTS125SM12 LFS](#)  
[PTS125SK43 LFS](#) [PTS125SJM73 LFS](#) [PTS125VJM73 LFS](#) [PTS125SJK73 LFS](#) [PTS125SK12LFS](#) [PTS125SK43](#)  
[SMTR2-LFS](#) [PTS125SJM73SMTR2LFS](#) [PTS125SK12 SMTR2-LFS](#) [PTS125SM12SMTR2LFS](#)  
[PTS125SK85SMTR2LFS](#) [PTS125SM43SMTR2LFS](#) [PTS125SJK73SMTR2LFS](#) [PTS125SM85 2 LFS](#)  
[PTS125SK43SMTR2LFS](#) [PTS125SM852LFS](#) [PTS125SM122LFS](#) [PTS125SK12SMTR2LFS](#) [PTS125SK852LFS](#)  
[PTS125SJK73LFS](#) [PTS125SM43LFS](#) [PTS125SK122LFS](#) [PTS125SK43P SMTR-2 LFS](#) [PTS125SK85PSMTR2LFS](#)  
[PTS125SJM73PSMTR2LFS](#) [PTS125SJK73PSMTR2LFS](#) [PTS125SM43PSMTR2LFS](#) [PTS125SM85PSMTR2LFS](#)  
[PTS125SM85SMTR2LFS](#) [PTS125SJK73 SMTR-2 LFS](#) [PTS125SJM73 SMTR-2 LFS](#) [PTS125SK12-2 LFS](#)  
[PTS125SM12 SMTR2-LFS](#) [PTS125SM43 SMTR2-LFS](#) [PTS125SM43-2 LFS](#) [PTS125SM12-2 LFS](#)