

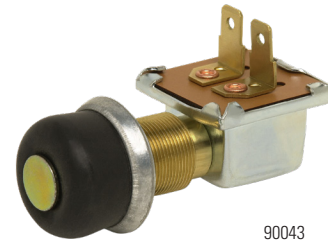
# LIGHT DUTY MOMENTARY PUSH BUTTON SWITCHES



90002-01



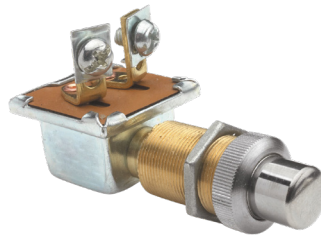
90043-07



90043



9023



9044

## Specifications

### Housing:

**Base:** Rectangular Plated Steel

**Facenut:** Chrome Plated

### Circuitries Available:

**Normally Off** (Circuit only closing with actuator depressed, with spring return to 'Off')

**Normally On** (Circuit opens when actuator is depressed, with spring return to 'On')

### Rating:

10A @ 12V DC, except when noted

### Contacts:

Silver

## Description

Littelfuse Light Duty Momentary Push Button Switches are weather and dust resistant. These push button switches have a gasket-sealed case and an O-Ring in stem for resistance to harsh environments. Products utilize silver contacts for corrosion resistance in applications up to 36V DC.

## Ordering Information

## Web Resources

Download installation instructions, 2D prints and technical resources at: [littelfuse.com/LightDutyPushButtonSwitches](http://littelfuse.com/LightDutyPushButtonSwitches)

PART NUMBER	DESCRIPTION	TYPE	MOUNTING STEM	TERMINALS
9023 *	15A resistive, 10A inductive at 12V DC, 8A resistive, 5A inductive at 24V DC	SPST Normally Off	5/8"-32 7/8" L (22.1mm)	2 Screws
9023-09 Obsolete: 1/11/18	15A resistive, 10A inductive at 12V DC; 8A resistive, 5A inductive at 24V DC; Screw-on black rubber cap 83280-03	SPST Normally Off	5/8"-32 7/8" L (22.1mm)	2 Screws
9044 *	Brass Button Starter Switch	SPST Normally Off	5/8"-32 1/16" L (26.9mm)	2 Screws
9115 *	Brass Button Starter Switch	SPST Normally On	5/8"-32 7/8" L (22.1mm)	2 Screws
9238 *	15A resistive, 10A inductive at 12V DC, 8A resistive, 5A inductive at 24V DC	SPST Normally Off	5/8"-32 7/8" L (22.1mm)	2 Blades
9238-01	15A resistive, 10A inductive at 12V DC; 8A resistive, 5A inductive at 24V DC; Screw-on black rubber cap 83280-03	SPST Normally Off	5/8"-32 7/8" L (22.1mm)	2 Blades
90002-01	Weather-resistant and dust-resistant, Brass Button Starter Switch and O-ring in stem	SPST Normally On	5/8"-32 1 1/16" L (26.9mm)	2 Screws
90043 *	Steel plunger protrudes through the snap-on black rubber cap. Designed to mate with Aptiv #2977647, Rated to 10A at 24V DC	SPST Normally On	5/8"-32 5/8" L (15.9mm)	2 Blades
90043-07 *	PVC-Coated variant of 90043 family, Features an extended stem with terminating contacts rated to 15A at 12V DC	SPST Normally On	5/8"-32 5/8" L (15.9mm)	2 7" Wire Leads
91126 *	PVC-Coated, Steel button 0.38" (9.7mm) diameter	SPST Normally On	7/16"-20 11/25" L (11.2mm)	2 7" Wire Leads
91126-07	PVC-Coated Momentary Push Button Switch	SPST Normally On	7/16"-20 11/25" L (11.2mm)	2 7" Wire Leads Aptiv #12047662

\* Box Available

# Mouser Electronics

Authorized Distributor

Click to View Pricing, Inventory, Delivery & Lifecycle Information:

Littelfuse:

[9044](#) [9115](#) [90043](#) [91126](#) [9211](#) [9109](#) [92116](#)