

NOTES:

- ALL DIMENSIONS ARE REFERENCE ONLY
- SPECIFICATIONS:
OPERATING VOLTAGE: 9-32VDC
CURRENT RATING: COIL+ 10A AT 85°C
STATUS 0.2A AT 85°C
QUIESCENT CURRENT 2 mA MAX
OPERATING TEMPERATURE: -40°C TO 85°C
OVERCURRENT THRESHOLD: 12 - 17A (COIL+ ONLY)
- CONNECTOR PINOUT:
PIN1: KEYED IGNITION SOURCE
PIN2: GROUND (BATTERY-)
PIN3: COIL+/LOAD+
PIN4: BATTERY+
PIN5: UNUSED
PIN6: STATUS
PIN7: REDUNDANT GROUND (BATTERY-)
PIN8: REDUNDANT GROUND (BATTERY-)
- MATING CONNECTOR: DEUTSCH P/N DT06-08S
- MATING PINS: DEUTSCH P/N 0462-201-16141
- UNUSED PINS SHOULD BE SEALED WITH BLANKING PIN- DEUTSCH P/N: 114017
- ONLY ONE GROUND (BATTERY -) CONNECTION IS REQUIRED FOR PROPER OPERATION.
ALL OTHER GROUNDS ARE REDUNDANT
- SEALED TO IP67 (PROVIDED BLANKING PINS USED)

Revision Control Record				Rev.	Description of Change	ECN No.	Date	Tolerances Unless otherwise specifically noted, the following are default tolerances:			PROPRIETARY INFORMATION This Engineering Drawing, and the information contained herein, is proprietary to Cole Hersee Company and may not be disclosed, re-produced, or in any other way transferred or communicated to any other party without the express written consent of an authorized representative of Cole Hersee Company.			Special Characteristics:			Cole Hersee Co. 20 Old Colony Ave., South Boston, MA, 02127 Phn: 617-268-2100 Web: www.colehersee.com			
Rev.	Description of Change	ECN No.	Date					2-places	3-places	Angular			CC	Critical Characteristic, relating to Safety and/or Regulatory Compliance	X	Significant Characteristic relating to Process Control	KC	Control Dimension relating to Form - Fit - Function as defined by Cole Hersee Company and/or the Customer	Description: VOLTAGE SENSING RELAY TIMER	
A	RELEASED DRAWING	09529	11/04/09					+/- 0.02"	+/- 0.005"	+/- 1°									Drawing / Part No.: 48541	
B	ADDED VIEW & DIM	11111	4/20/11																Current Rev. B	
								Metric: Shown in [] refers to equivalent English Dim Tol			"REF." or an Asterisk (*) = Non-Toleranced Reference Dimension, shown for clarification purposes only.			NOTE: All tolerances are Non-Cumulative.						
								FORM CHT-6 (2/07)			Used On or Ref.: EX28647			Scale: 1:1		Drawn By: CN		Date Drawn: 09/14/09 Pg. 1 of 2		

4

3

2

1

B

B

↗

↖

48541-01	15	12.1	24.2	60	12805
48541	15	12.1	24.2	60	None
COLE HERSEE PART NUMBER	Key Off Timer (minutes)	12V System Disconnect Threshold (Volts)	24V System Disconnect Threshold (Volts)	Disconnect Alarm Period (seconds)	Kit

SEE PAGE 1

Revision Control Record

Rev.	Description of Change	ECN No.	Date

Tolerances

Unless otherwise specifically noted, the following are default tolerances;

2-places

3-places

Angular

+/- 0.02"

+/- 0.005"

+/- 1°

Metric: Shown in [] refers to equivalent English Dim Tol

"REF." or an Asterisk (*) = Non-Toleranced Reference Dimension, shown for clarification purposes only.

NOTE: All tolerances are Non-Cumulative.

FORM CHT-6 (2/07)

Used On or Ref.: EX28647

PROPRIETARY INFORMATION

This Engineering Drawing, and the information contained herein, is proprietary to Cole Hersee Company and may not be disclosed, re-produced, or in any other way transferred or communicated to any other party without the express written consent of an authorized representative of Cole Hersee Company.

Scale: 1:1

Drawn By: CN

Date Drawn: 09/14/09

Pg. 2 of 2

Special Characteristics:

CC

Critical Characteristic, relating to Safety and/or Regulatory Compliance

X

Significant Characteristic relating to Process Control

KC

Control Dimension relating to Form - Fit - Function as defined by Cole Hersee Company and/or the Customer

Cole Hersee Co.

20 Old Colony Ave., South Boston, MA, 02127

Phn: 617-268-2100 Web: www.colehersee.com

Description:

VOLTAGE SENSING RELAY TIMER

Drawing / Part No.:

48541

Current Rev.

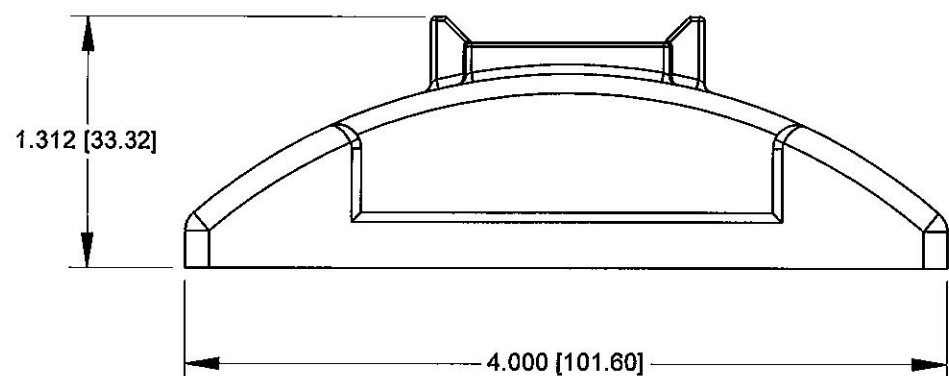
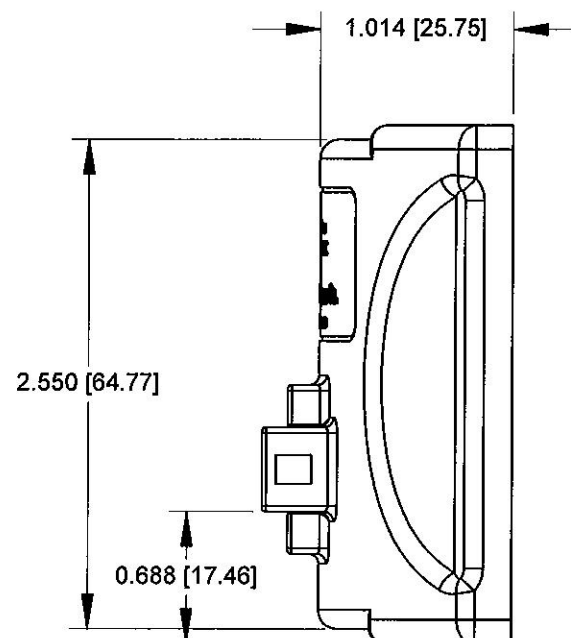
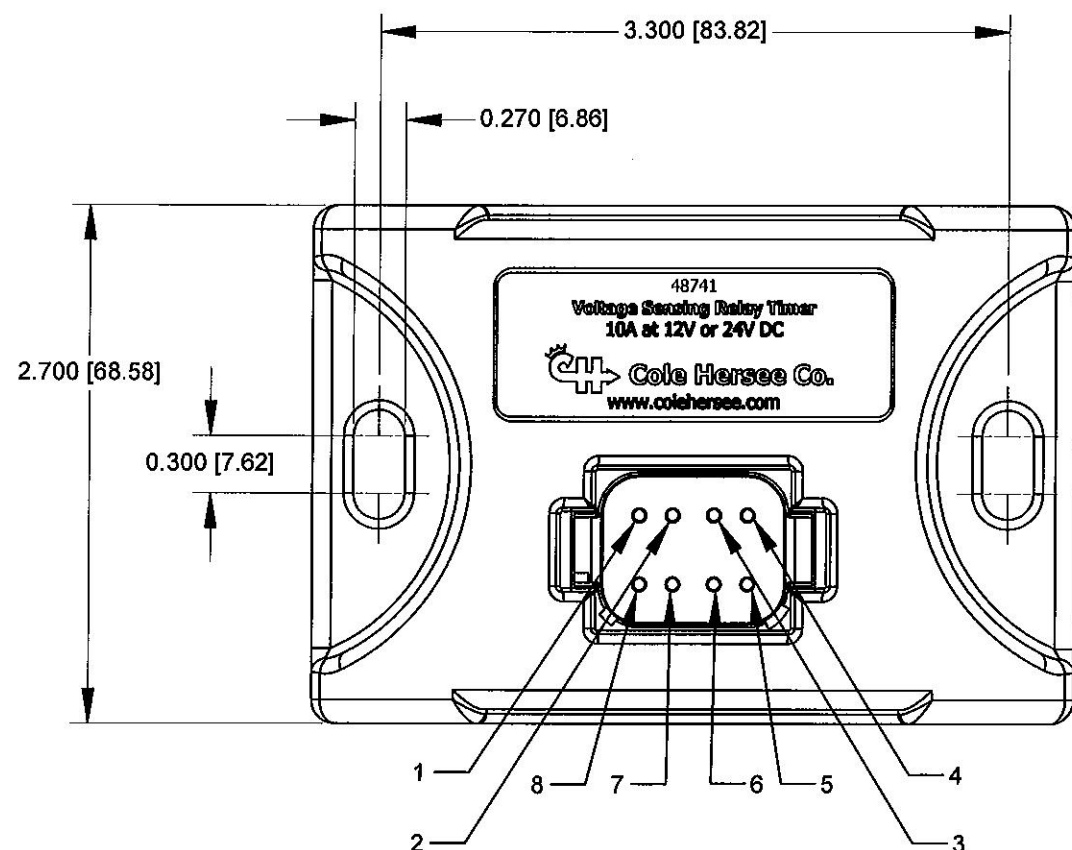
B

4

3

2

1



NOTES:

1. ALL DIMENSIONS ARE REFERENCE ONLY
2. SPECIFICATIONS:
 - OPERATING VOLTAGE: 9-32VDC
 - CURRENT RATING: COIL+ 10A AT 85°C
 - STATUS 0.2A AT 85°C
 - QUIESCENT CURRENT 2 mA MAX
 - OPERATING TEMPERATURE: -40°C TO 85°C
 - OVERCURRENT THRESHOLD: 12 - 17A (COIL+ ONLY)
3. CONNECTOR PINOUT:
 - PIN1: KEYED IGNITION SOURCE
 - PIN2: GROUND (BATTERY-)
 - PIN3: COIL+/LOAD+
 - PIN4: BATTERY+
 - PIN5: UNUSED
 - PIN6: STATUS
 - PIN7: REDUNDANT GROUND (BATTERY-)
 - PIN8: REDUNDANT GROUND (BATTERY-)
4. MATING CONNECTOR: DEUTSCH P/N DT06-08S
5. MATING PINS: DEUTSCH P/N 0462-201-16141
6. UNUSED PINS SHOULD BE SEALED WITH BLANKING PIN- DEUTSCH P/N: 114017
7. ONLY ONE GROUND (BATTERY -) CONNECTION IS REQUIRED FOR PROPER OPERATION. ALL OTHER GROUNDS ARE REDUNDANT
8. SEALED TO IP67 (PROVIDED BLANKING PINS USED)

48741-01	15	12.1	24.2	60	12805
48741	15	12.1	24.2	60	NONE
PART NUMBER	Key Off Timer (minutes)	12V System Disconnect Threshold	24V System Disconnect Threshold	Disconnect Alarm Period (seconds)	KIT

Revision Control Record				Rev.	Description of Change	ECN No.	Date	Tolerances Unless otherwise specifically noted, the following are default tolerances:			Special Characteristics:			Cole Hersee Co.	
Rev.	Description of Change	ECN No.	Date					2-places +/- 0.02"	3-places +/- 0.005"	Angular +/- 1°	CC Critical Characteristic, relating to Safety and/or Regulatory Compliance	Significant Characteristic relating to Process Control	Control Dimension relating to Form - Fit - Function as defined by Cole Hersee Company and/or the Customer	20 Old Colony Ave., South Boston, MA, 02127 Phn: 617-268-2100 Web: www.colehersee.com	
A	RELEASED DRAWING	10366	11/3/10											Description: VOLTAGE SENSING RELAY TIMER	
								Metric: Shown in [] refers to equivalent English Dim Tol "REF." or an Asterisk (*) = Non-Toleranced Reference Dimension, shown for clarification purposes only. NOTE: All tolerances are Non-Cumulative.			PROPRIETARY INFORMATION This Engineering Drawing, and the information contained herein, is proprietary to Cole Hersee Company and may not be disclosed, re-produced, or in any other way transferred or communicated to any other party without the express written consent of an authorized representative of Cole Hersee Company.			Drawing / Part No.: 48741	
								FORM CHT-5 (2/07) Used On or Ref.: 48541; EX28808			Scale: 1:1 Drawn BY: DPS Date Drawn: 11/2/10			Pg. 1 of 1	
														Current Rev. A	

4

3

2

1

Mouser Electronics

Authorized Distributor

Click to View Pricing, Inventory, Delivery & Lifecycle Information:

Littelfuse:

[04980933.X](#) [04980932ZXT](#) [04980933ZXT](#) [04980932.X](#)