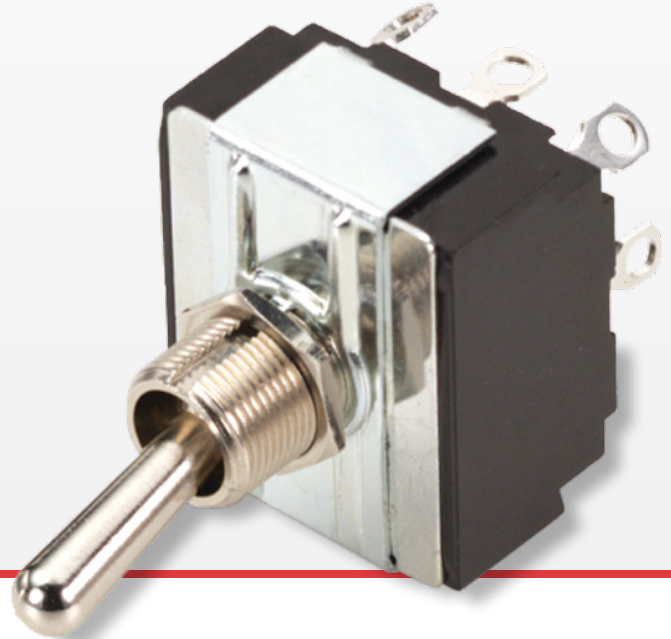


# H/I-Series

Toggle Switches

**PRODUCT WEBPAGE**

*request sample, configure part*



General purpose workhorses with options tailored to meet most any need. Ratings to 17A 125VAC, various actuator, bushing, termination, and circuit choices allow this toggle to easily integrate into a variety of different applications. The H/I-Series is appropriate for usage in low voltage DC applications.

<b>3-4</b>	<b>3-17</b>	<b>125, 250, 600</b>	<b>12-24</b>
Poles	Amps	VAC	VDC

## Typical Applications

- Marine
- Food Service
- Generator
- Industrial Control
- Office Automation

# Tech Specs

## Dielectric Strength

UL/CSA: 1000V - live to dead metal parts

## Electrical Life

50,000 cycles - maintained  
25,000 cycles - momentary

## Operating Temperature

32°F to 185°F (0° to 85°C)

# Ordering Scheme

Sample Part Number H K 25 1 - 73

Selection 1 2 3 4 5

### 1. SERIES

H

### 2. CIRCUIT 5, 9, 10, 11, 12

Three Pole		Three Pole (In Four Pole Base)	
<b>K</b>	ON-NONE-OFF	<b>K</b>	ON-NONE-OFF
<b>L</b>	ON-NONE-ON	<b>L</b>	ON-NONE-ON
<b>M</b>	ON-OFF-ON	<b>M</b>	ON-OFF-ON
<b>O</b>	ON-OFF-ON		

### 3. RATING

<b>25</b>	10A 250 VAC 15A 125 VAC 3/4HP 250 VAC 1, 2 or 3-Phase	<b>A25</b>	6A 600VAC, 10A 250 VAC, 15A 125 VAC, 3/4HP 250 VAC, 1, 2, 3-Phase,
<b>26</b>	3A 250 VAC 6A 125 VAC 1/4HP 125-250 VAC 1, 2 or 3-Phase	<b>A27</b>	1 HP 480-600VAC; 3 Phase 6A 600 VAC, 12A 250 VAC, 17A 125 VAC, 2 HP 480-600 VAC; 3 Phase
<b>27</b>	12A 250 VAC 17A 125 VAC 1-1/2HP 250 VAC 1, 2, 3-Phase		

### 4. TERMINATION/FUNCTION 1, 4

Function	Solder Lug	.250 Tab (QC)	.205 Tab (QC)	.187 Tab (QC)	Screw Term.	Wire Lead	PC Term.	Combi Term.
ON-NONE-OFF	0	1	2	3	4	5	6	7
(ON)-NONE-OFF	A	B	C	D	E	F	G	H
ON-NONE-(OFF)	L	M	Q	R	S	T	U	Y
ON-NONE-ON	0	1	2	3	4	5	6	7
ON-NONE-(ON)	A	B	C	D	E	F	G	H
ON-OFF-ON	0	1	2	3	4	5	6	7
ON-OFF-(ON)	A	B	C	D	E	F	G	H
(ON)-OFF-(ON)	L	M	Q	R	S	T	U	Y

### 5. TOGGLE STYLE 8

Bat Style Toggle	Toggle with Neoprene Seal	Toggle Length	Bushing Length
<b>73</b>	<b>78</b>	.687	.465
<b>NBL3</b>	<b>NBL8</b>	.687	.465
<b>NWH3</b>	<b>NWD8</b>	.687	.465
<b>NRD3</b>	<b>NRD8</b>	.687	.465

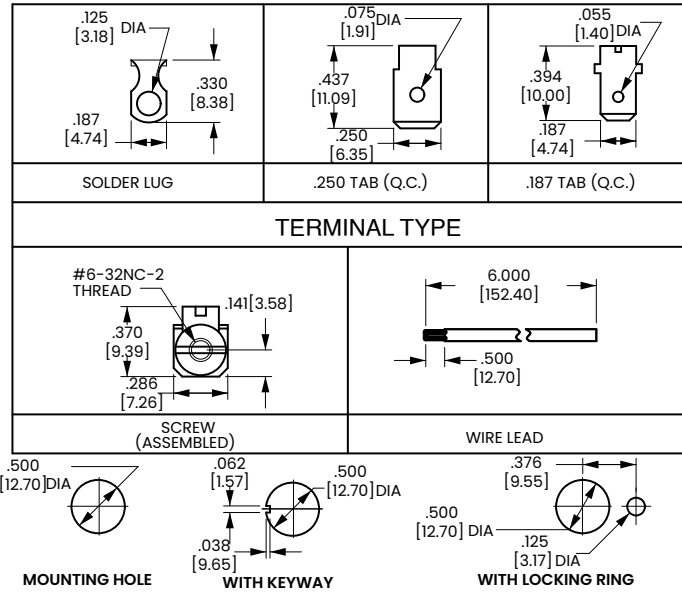
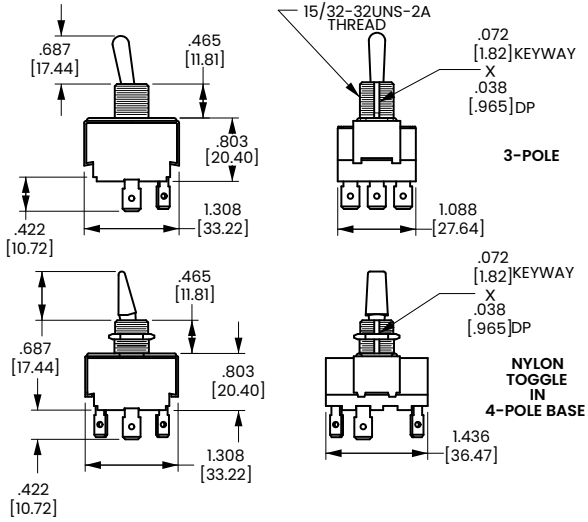
#### Notes:

- Standard wire lead length is 6". For other wire lead lengths, use wire lead termination/function code and add "/" and the wire lead length required at the end of the part number. Example: HK255-73/10"
- Hardware/Packaging Options may be added to the base part number by adding a "/" with the option at the end of the part number. Example: HL251-73 / HDW ASSM  
Available options include:  

2 Hex	2 Hex nuts (1 assembled on switch, 1 supplied in bulk)
No Hardware	No Hardware included
HDW ASSM	With Hardware assembled
HDW bulk	With Hardware bulk
Poly	With Polybag
- The nbl3 and nbl8 toggle uses a black oxide plated metal bushing. Nwh and nrd toggles use nickel plated metal bushings. Nbl, nwh, and nrd toggles use a four pole base with pole 3 empty.
- () indicates momentary function.
- Maintained or Momentary action of the switch is determined by the combination of the circuit and termination/function designation of the description. Example: HK25B-73 is a (ON)-OFF circuit with .250 TAB Terminals.
- Combi-terminals are only available with ratings 25 & 27 with screws and saddle Clamps Supplied in bulk.
- Screw terminals are supplied with screws assembled to terminals.
- Nylon toggles are not available with momentary circuits.
- The "o" circuit is a reversing circuit with jumpers from terminal 1 to 6, 3 to 4, and terminal 7 to 9. Terminals are located at 1, 2, 3, 4, 5, 6, 7, 8, and 9.
- The "o" circuit is not available with pc or combi terminals.
- A special "o" circuit is a reversing circuit called out with a "j" following the termination/function digit in the description. Jumpers are from terminal 1 to 5, 3 to 5, 4 to 9 and 6 to 7. Terminals are located at 2, 3, 6, and 9 with a double terminal at 8.
- Special "O" circuit only available with .250 Tab terminals. Example: H0251J-73
- When the switch circuit is not ul or csa approved, the rating code in the item master file will be 000, no matter what the rating code call out is in the switch description.

# Dimensional Specs

inches [millimeters]



## Authorized Sales Representatives and Distributors

Click on a region of the map below to find your local representatives and distributors or visit [www.carlingtech.com/findarep](http://www.carlingtech.com/findarep).



## About Carling

Founded in 1920, Carling Technologies is a leading manufacturer of electrical and electronic switches and assemblies, circuit breakers, electronic controls, power distribution units, and multiplexed power distribution systems. With six ISO9001 and IATF16949 registered manufacturing facilities and technical sales offices worldwide, Carling Technologies Sales, Service and Engineering teams do much more than manufacture electrical components, they engineer powerful solutions! To learn more about Carling please visit [www.carlingtech.com/company-profile](http://www.carlingtech.com/company-profile).

To view all of Carling's environmental, quality, health & safety certifications please visit [www.carlingtech.com/environmental-certifications](http://www.carlingtech.com/environmental-certifications).

© Carling Technologies, Inc.

4. Carling is a registered trademark of Carling Technologies, Inc. in the U.S. and other countries.

# Mouser Electronics

Authorized Distributor

Click to View Pricing, Inventory, Delivery & Lifecycle Information:

## [Carling Technologies:](#)

[HM256-73](#) [IK25S-78](#) [HL26A-73](#) [HGE251-73-XUN1](#) [HM256-78-XCPW1](#) [HK256-73](#) [HKA251-73](#) [HM251-73-XJP1](#)  
[IM25M-78](#) [HK25A-73](#) [HLA275-NBL3-XRL1](#) [HKA271-73/272-06747](#) [IK254-73-XMS](#) [IM25G-73](#) [HO251-73](#) [HL254-73-](#)  
[XS](#) [IM250-73/POLY](#) [HGG5B-73-XWG1](#) [IL250-NBL3/POLY](#) [IM250-73-XSS1](#) [HL256-52-XIT1](#) [HL254-73/HDW ASSM](#)  
[HO251J-73](#) [HL251-73/2 HEX/728-15946](#) [HM254-73/2 HEX](#) [HM277-73-XJS1](#) [HM25G-73](#) [IGE251-73](#) [HO255-78-](#)  
[XVEQ1](#) [HL251-73/HDW BULK](#) [HO25FJ-73-XAS2](#) [HGG5B-73XRA1](#) [HLA271-73-XES1](#) [HM251-78-XMA3](#) [IL256-68](#)  
[HM266-NBL3-XLT1](#) [HM25B-73XHO1](#) [IGER251-73-XVA1](#) [HL251-78XLI4](#) [HMA270-78-XCP1](#) [HKA271-73/728-15907](#)  
[HK04-73](#) [HM250-73/2 HEX](#) [HM251-73-XSU1](#) [IM01-73-XAL1](#) [HKA270-78](#) [IL251-73/POLY](#) [IM251-73-XHT2](#) [IK251-52](#)  
[HM254-73-XBL1](#) [HO253-73-XAD1](#) [HO25BJ-73XGE2](#) [IM251-78-XAB1](#) [HL251-73-XS11](#) [IM25G-78](#) [HL271-73-XPM1](#)  
[HKA275-73-XCG1](#) [HL276-73](#) [HL254-73-XBB1](#) [HL251-52-XRS1](#) [IGE251-NBL3](#) [HO250-73](#) [HM254-73/HDW ASSM](#)  
[HO25MJ-78](#) [HMA251-73](#) [IM25A-78](#) [HMA27S-73](#) [HGE254-73XDU1](#) [HO251J-NBL3-XASP1](#) [HO25BJ-73XBG1](#)  
[IM251-73-XFB1](#) [HL254-73/SCREWS BULK](#) [IM25S-C3](#) [IL254-73XS](#) [HO255-73-XUG3](#) [HO254-73](#) [IH251-73](#) [IM256-](#)  
[52](#) [HK256-NBL3](#) [IL250-52](#) [IM251-78-XCH1](#) [HLA254-73](#) [IK254-B3](#) [IM25M-73-XHT2](#) [HKA271-B2-XGC1](#) [HKA250-73-](#)  
[XSPR1](#) [IL251-73-XMM1](#) [HL254-73/728-15946](#) [HO250-73XUL1](#) [IL253-63](#) [HM251-78-XCH1](#) [HO251-73-XMA1](#)  
[HL250-73/POLY](#) [HKA27L-73](#) [IGE25A-73](#) [IK256-73](#) [IGER256-NWH3-XSW2](#) [HM25S-73-XMS1](#) [HK27L-73](#) [HKA254-](#)  
[73](#)