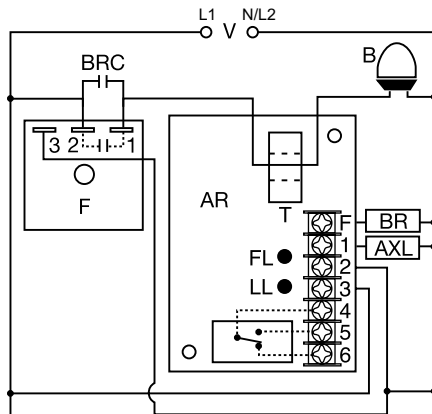


FB SERIES

Flasher & Incandescent Beacon Alarm Relay



Wiring Diagram



V = Voltage
B = Beacon
F = Flasher
T = Toroid
BRC = Flasher Bypass Relay Contacts
AR = FB Alarm Relay
BR = Bypass Relay Coil
FL = Flasher Failure LED
LL = Lamp Failure LED
AXL = Lamp Alarm Relay Coil

NOTE: Flasher module may be located on either the line or load side of the toroidal sensor.

Description

The FB Series is used to monitor the operation of one two-lamp incandescent beacon and one beacon flasher (or auxiliary module). The flasher and lamps are monitored by sensing the flow of current in the circuit. If the lamp(s) or the flasher fail to operate properly, a solid-state output and an isolated SPDT relay energize. When connected to a site monitoring system, this unit provides the remote beacon monitoring protection required by the FAA/FCC. On a multiple beacon structure, one unit is required for each two-lamp incandescent beacon (one unit per beacon for LED beacons).

Operation

If one lamp in an incandescent beacon fails, the relay and solid-state lamp failure output energize after 10s. If the flasher fails in the ON or OFF condition, the relay and the solid-state flasher failure output energizes after 6s. If both failures occur, all three outputs energize after their trip delays.

Note: If both incandescent lamps fail, all three outputs will energize. The relay and solid-state flasher failure output energizes after 6s, and the solid-state lamp failure output energizes after 10s.

Features & Benefits

FEATURES	BENEFITS
Toroidal current sensing	Reliable low cost monitoring of the flasher and lamps through built-in CT and provides isolation from the monitored circuit
Failsafe beacon monitoring	Alarm monitors for failed incandescent lamps in addition to flasher function
One isolated, 5A, SPDT alarm output plus two, 1A, solid-state line voltage alarm outputs	When connected to a site monitoring system, it provides the remote beacon monitoring protection required by the FAA / FCC.
Fixed trip delays for flasher (6s) and lamp (10s) failures	Prevents nuisance alarms

Ordering Information

MODEL	LINE VOTAGE	LAMP TYPE
FB120A	120VAC	Incandescent Beacon
FB230A	230VAC	Incandescent Beacon

If you don't find the part you need, call us for a custom product 800-843-8848

FB SERIES

Specifications

Input Voltage	
FB120A	120VAC $\pm 15\%$
FB230A	230VAC $\pm 15\%$
AC Line Frequency	50/60Hz
Lamp Socket Voltage	$\pm 10\%$; 50/60Hz
Alarm Outputs	
Type	3 total - 1 relay, 2 solid state; One isolated SPDT relay rated 5A resistive Two solid-state line voltage outputs rated 0.5A steady, 5A inrush
Lamp Failure Detection	
FB120A	For two 620W or 700W lamps
FB230A	For two 500W or 700W lamps
Trip Delays	
Flasher Failure	Fixed at 6s; -0/+40%
Lamp Failure	Fixed at 10s; -0/+40%

LEDs

Lamp Failure (Red)
Flasher Failure (Red)
Protection
Circuitry
Mounting
Dimensions

Glows when one or both lamps fail
Glows when the flasher fails

Termination

Environmental
Operating/Storage
Temperature
Weight

Encapsulated
Surface mount with two #6 (M3.5 x 0.6) screws
H 88.9 mm (3.5"); **W** 63.5 mm (2.5");
D 44.5 mm (1.75")
7 position barrier block for 20 AWG (0.5 mm²)
to 14 AWG (2.5 mm²) wire

-55° to 60°C / -55° to 85°C
≅ 7 oz (198 g)

Mouser Electronics

Authorized Distributor

Click to View Pricing, Inventory, Delivery & Lifecycle Information:

[Littelfuse:](#)

[FB9L](#)