

**NEW!**

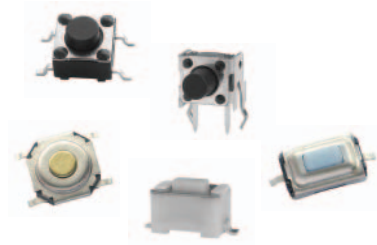
# RS Series Tact Switches

## Features/Benefits

- Broad range of products
- Extra long life cycles available
- Variety of operating forces and heights
- Thru-hole and SMT options
- Custom design available

## Typical Applications

- Consumer electronics
- Computer peripherals
- Household appliances
- Audio & visual equipment
- Automotive

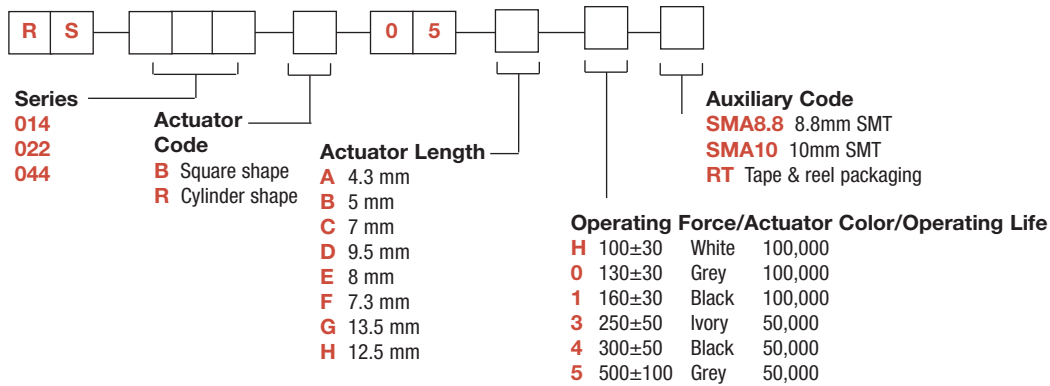


B

Tactile Switches

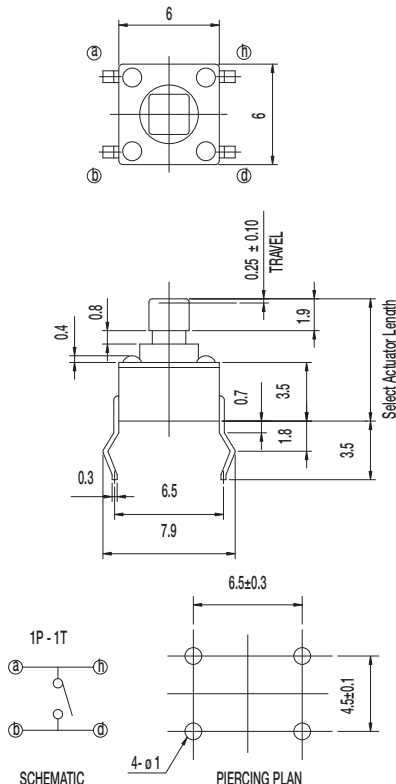
## How To Order

Our easy build-a-switch concept allows you to mix and match options to create the switch you need. To order, select desired option from each category and place it in the appropriate box.



## RS-014B05

Square Shape Actuator



## Specifications

CONTACT RATING: 50mA @ 12 VDC

INITIAL CONTACT RESISTANCE: 100 m ohms max.

INSULATION RESISTANCE: 100 M ohms min.

DIELECTRIC STRENGTH: 250 V AC (50-60 Hz) between open terminals and between the frame and terminal.

RELEASING FORCE: 20gf min. (0.196N min.)

TRAVEL: 0.25 ± 0.10 mm

OPERATING TEMPERATURE: -20°C to 70°C

## Materials

KNOB: PA

COVER: SPCC

HOUSING: PA

SPRING PLATE: Silver clad

TERMINAL: Silver plated

**NOTE:** Specifications and materials listed above are for switches with standard options. For information on specific and custom switches, please contact Customer Service.



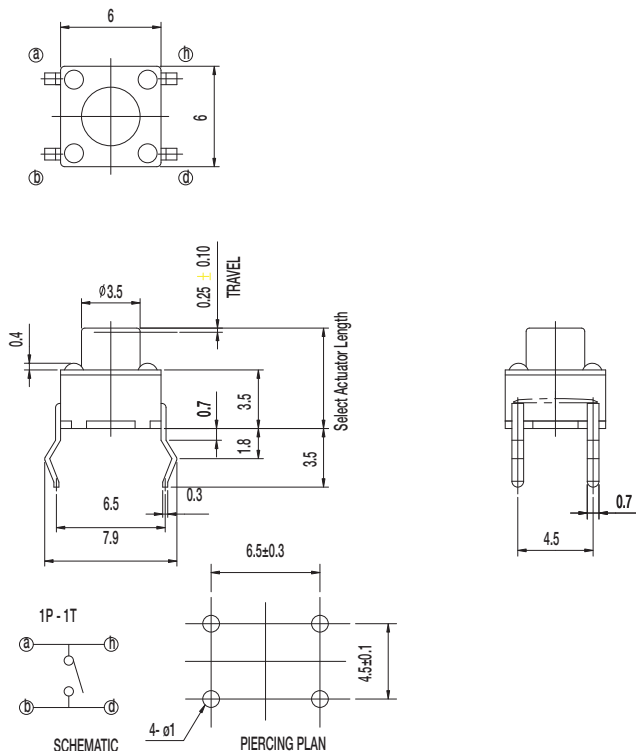
Dimensions are shown: mm  
Specifications and dimensions subject to change

# RS Series Tact Switches

**NEW!**

## RS-014R05 Cylinder Shape Actuator

### Tactile Switches



### Specifications

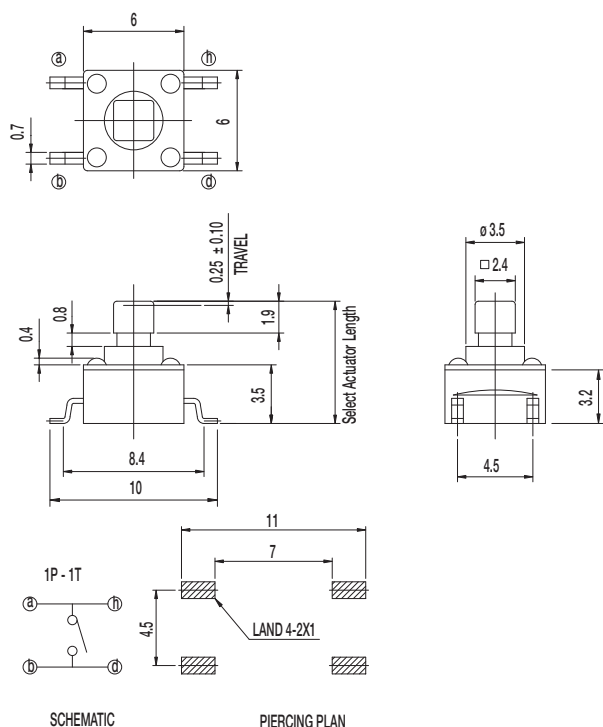
CONTACT RATING: 50mA @ 12 VDC  
 INITIAL CONTACT RESISTANCE: 100 m ohms max.  
 INSULATION RESISTANCE: 100 M ohms min.  
 DIELECTRIC STRENGTH: 250 V AC (50-60 Hz) between open terminals and between the frame and terminal.  
 RELEASING FORCE: 20gf min. (0.196N min.)  
 TRAVEL: 0.25 ± 0.10 mm  
 OPERATING TEMPERATURE: -20°C to 70°C

### Materials

KNOB: PA  
 COVER: SPCC  
 HOUSING: PA  
 SPRING PLATE: Silver clad  
 TERMINAL: Silver plated

**NOTE:** Specifications and materials listed above are for switches with standard options. For information on specific and custom switches, please contact Customer Service.

## RS-014B05 SMA Square Shape Actuator SMT



### Specifications

CONTACT RATING: 50mA @ 12 VDC  
 INITIAL CONTACT RESISTANCE: 100 m ohms max.  
 INSULATION RESISTANCE: 100 M ohms min.  
 DIELECTRIC STRENGTH: 250 V AC (50-60 Hz) between open terminals and between the frame and terminal.  
 RELEASING FORCE: 20gf min. (0.2N min.)  
 TRAVEL: 0.25 ± 0.10 mm  
 OPERATING TEMPERATURE: -20°C to 70°C

### Materials

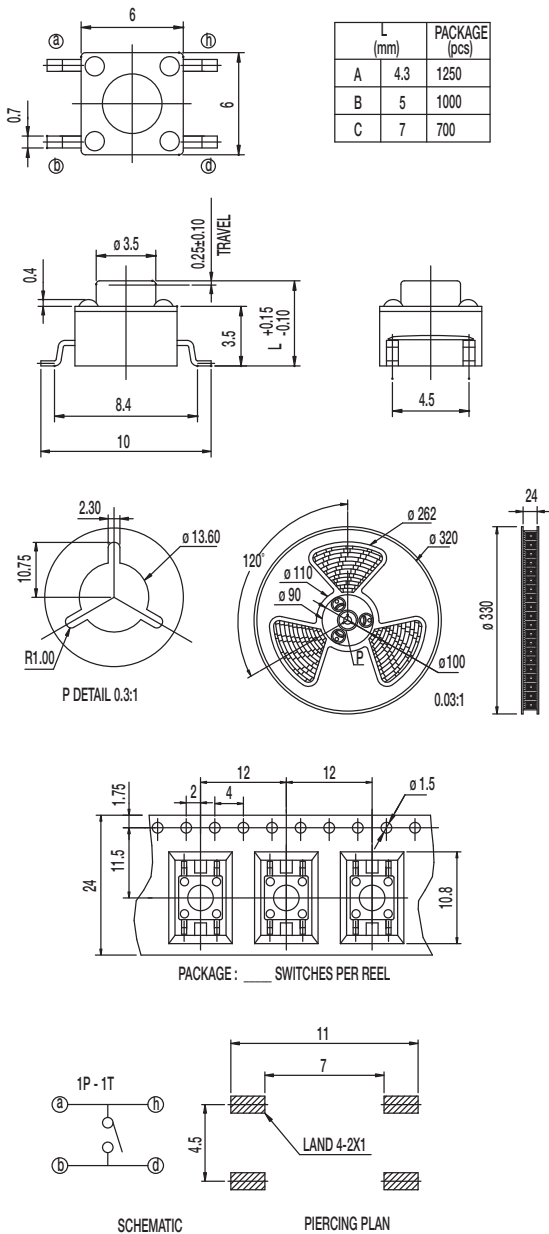
KNOB: PA  
 COVER: SPTE  
 HOUSING: PA  
 SPRING PLATE: Silver clad  
 TERMINAL: Silver plated

**NOTE:** Specifications and materials listed above are for switches with standard options. For information on specific and custom switches, please contact Customer Service.

NEW!

# RS Series Tact Switches

## RS-014R05 SMA RT Cylinder Shape Acuator SMT



### Specifications

CONTACT RATING: 50mA @ 12 VDC

INITIAL CONTACT RESISTANCE: 100 m ohms max.

INSULATION RESISTANCE: 100 M ohms min.

DIELECTRIC STRENGTH: 250 V AC (50-60 Hz) between open terminals and between the frame and terminal.

OPERATING LIFE: 100,000 cycles with load

OPERATING FORCE: 160 ± 30 gf

RELEASING FORCE: 20gf min. (0.196N min.)

TRAVEL: 0.25 ± 0.10 mm

OPERATING TEMPERATURE: -20°C to 70°C

### Materials

KNOB: PA

COVER: SPTE

HOUSING: PA

SPRING PLATE: Silver clad

TERMINAL: Silver plated

**NOTE:** Specifications and materials listed above are for switches with standard options. For information on specific and custom switches, please contact Customer Service.



B

Tactile Switches

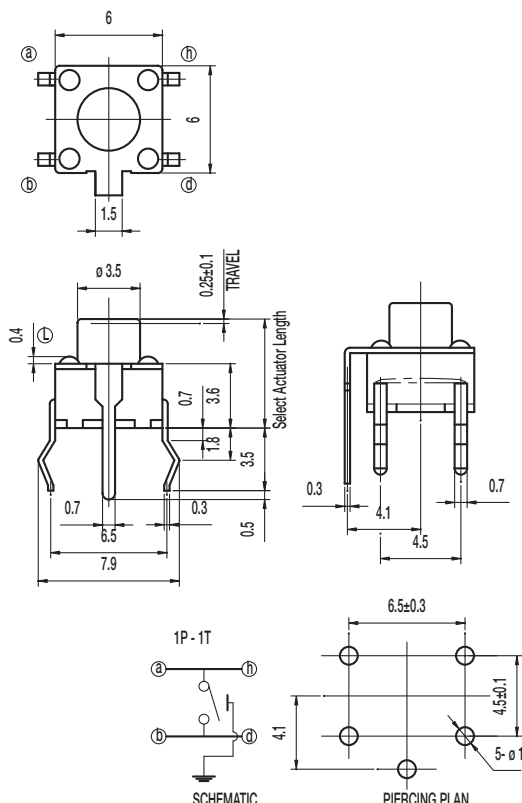
# RS Series Tact Switches

**NEW!**

## RS-044R05 Cylinder Shape Actuator THT

### Tactile Switches

B



### Specifications

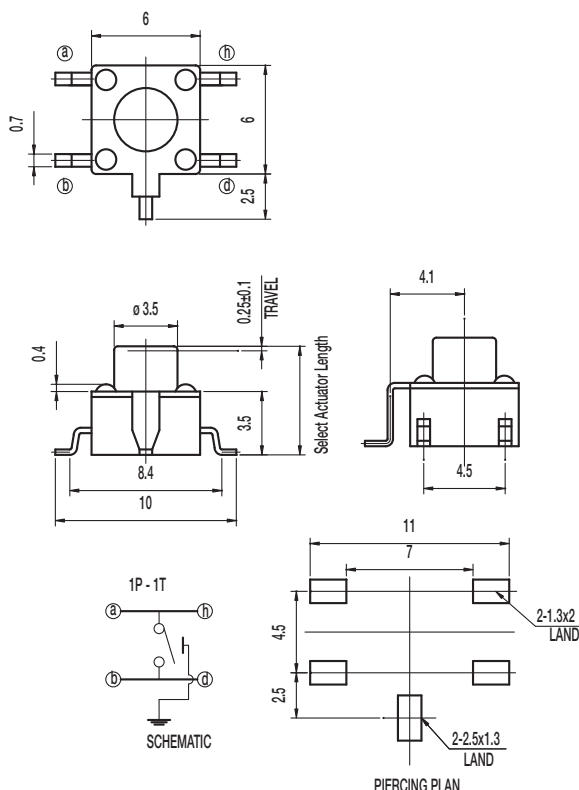
CONTACT RATING: 50mA @ 12 VDC  
INITIAL CONTACT RESISTANCE: 100 m ohms max.  
INSULATION RESISTANCE: 100 M ohms min.  
DIELECTRIC STRENGTH: 250 V AC (50-60 Hz) between open terminals and between the frame and terminal.  
RELEASING FORCE: 20gf min. (0.2N min.)  
TRAVEL: 0.25 ± 0.10 mm  
OPERATING TEMPERATURE: -20°C to 70°C

### Materials

KNOB: PBT  
COVER: SPTE  
HOUSING: PBT  
SPRING PLATE: Silver clad  
TERMINAL: Silver plated

**NOTE:** Specifications and materials listed above are for switches with standard options. For information on specific and custom switches, please contact Customer Service.

## RS-044R05 SMA Cylinder Shape Actuator SMT



### Specifications

CONTACT RATING: 50mA @ 12 VDC  
INITIAL CONTACT RESISTANCE: 100 m ohms max.  
INSULATION RESISTANCE: 100 M ohms min.  
DIELECTRIC STRENGTH: 250 V AC (50-60 Hz) between open terminals and between the frame and terminal.  
RELEASING FORCE: 20gf min. (0.2N min.)  
TRAVEL: 0.25 ± 0.10 mm  
OPERATING TEMPERATURE: -20°C to 70°C

### Materials

KNOB: PA  
COVER: SPTE  
HOUSING: PA  
SPRING PLATE: Silver clad  
TERMINAL: Silver plated

**NOTE:** Specifications and materials listed above are for switches with standard options. For information on specific and custom switches, please contact Customer Service.

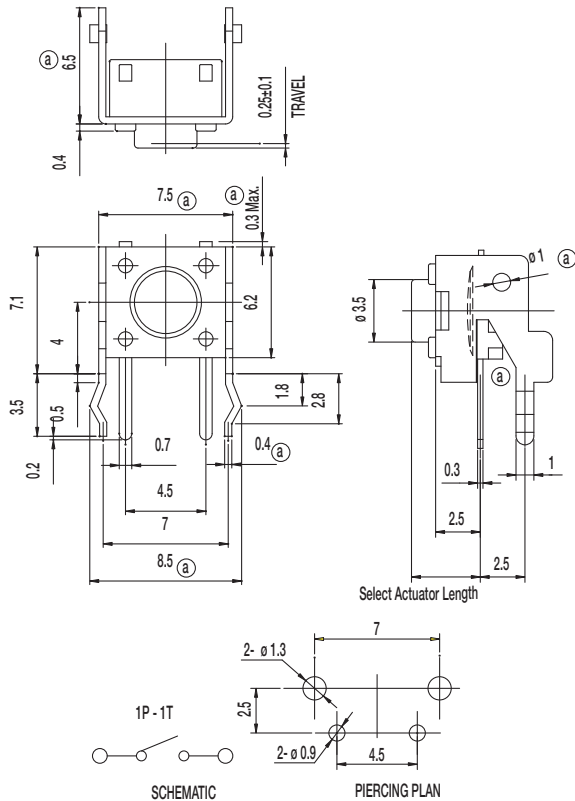
**C&K**

Dimensions are shown: mm  
Specifications and dimensions subject to change

**NEW!**

## RS Series Tact Switches

### RS-022R05



#### Specifications

CONTACT RATING: 50mA @ 12 VDC

INITIAL CONTACT RESISTANCE: 100 m ohms max.

INSULATION RESISTANCE: 100 M ohms min.

DIELECTRIC STRENGTH: 250 V AC (50-60 Hz) between open terminals and between the frame and terminal.

RELEASING FORCE: 20gf min. (0.196N min.)

TRAVEL: 0.25 ± 0.10 mm

OPERATING TEMPERATURE: -20°C to 80°C

#### Materials

KNOB: PA

COVER: SPTE

HOUSING: PA

SPRING PLATE: Silver clad

TERMINAL: Silver plated

**NOTE:** Specifications and materials listed above are for switches with standard options. For information on specific and custom switches, please contact Customer Service.

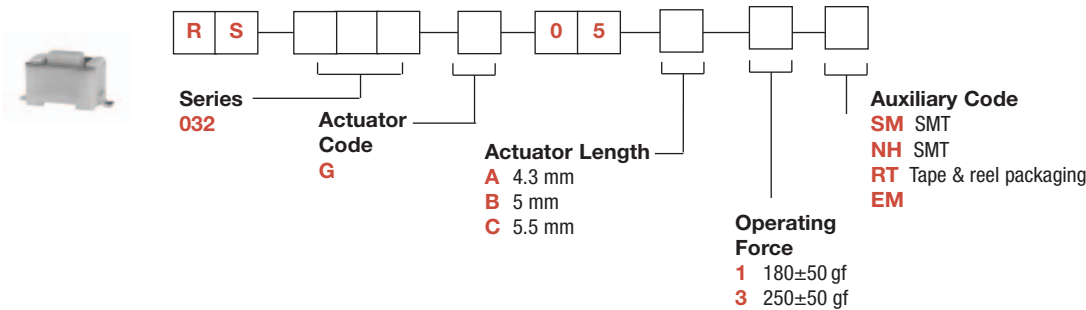


**B**

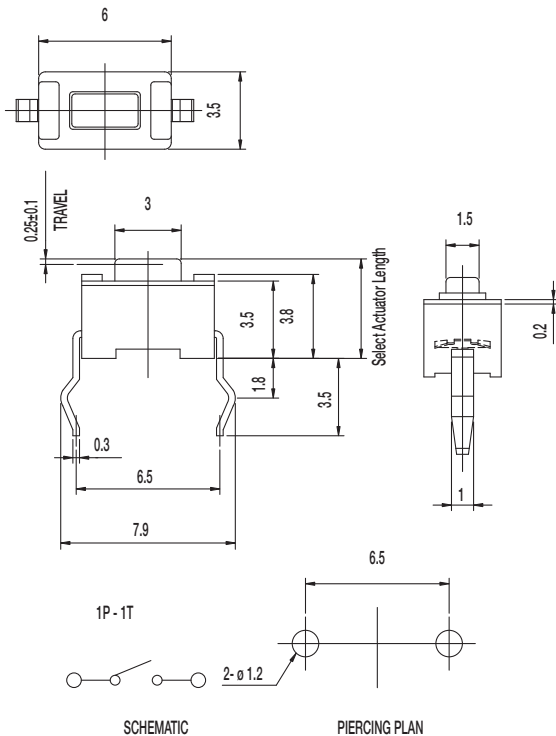
**Tactile Switches**

RS 032 Series  
Tact Switches

NEW!



RS-032G05



Specifications

CONTACT RATING: 50mA @ 12 VDC  
INITIAL CONTACT RESISTANCE: 100 m ohms max.  
INSULATION RESISTANCE: 100 M ohms min.  
DIELECTRIC STRENGTH: 250 V AC (50-60 Hz) between open terminals and between the frame and terminal.  
RELEASING FORCE: 20gf min. (0.196N min.)  
TRAVEL: 0.25 ± 0.10 mm  
OPERATING TEMPERATURE: -20°C to 70°C

Materials

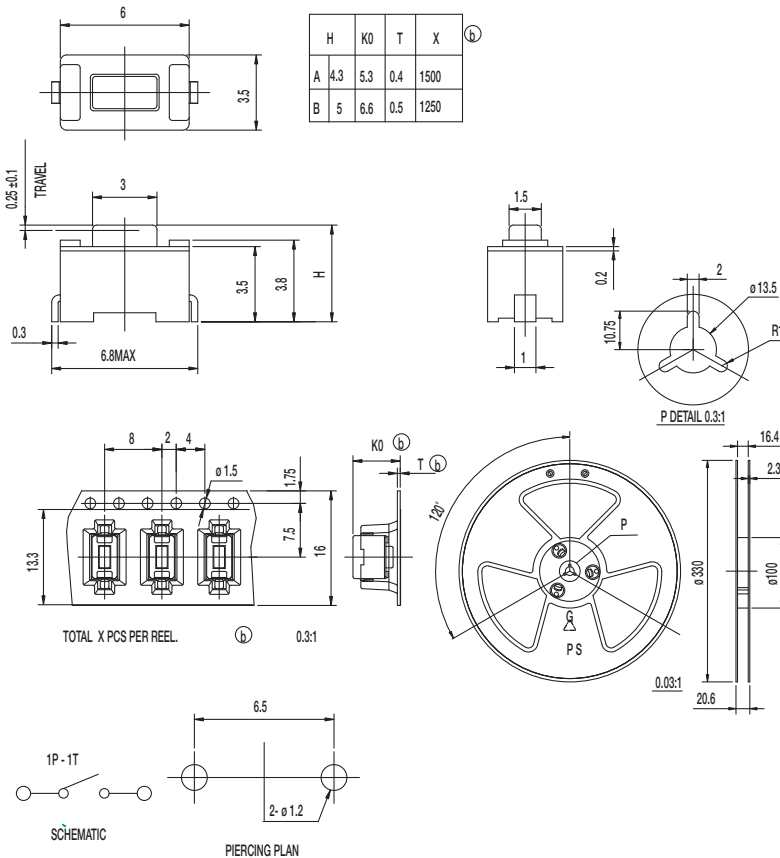
KNOB: PA46  
COVER: SUS  
HOUSING: PA46  
SPRING PLATE: Silver clad  
TERMINAL: Silver plated

**NOTE:** Specifications and materials listed above are for switches with standard options. For information on specific and custom switches, please contact Customer Service.

**NEW!**

# RS Series Tact Switches

## RS-032G05 NH RT



### Specifications

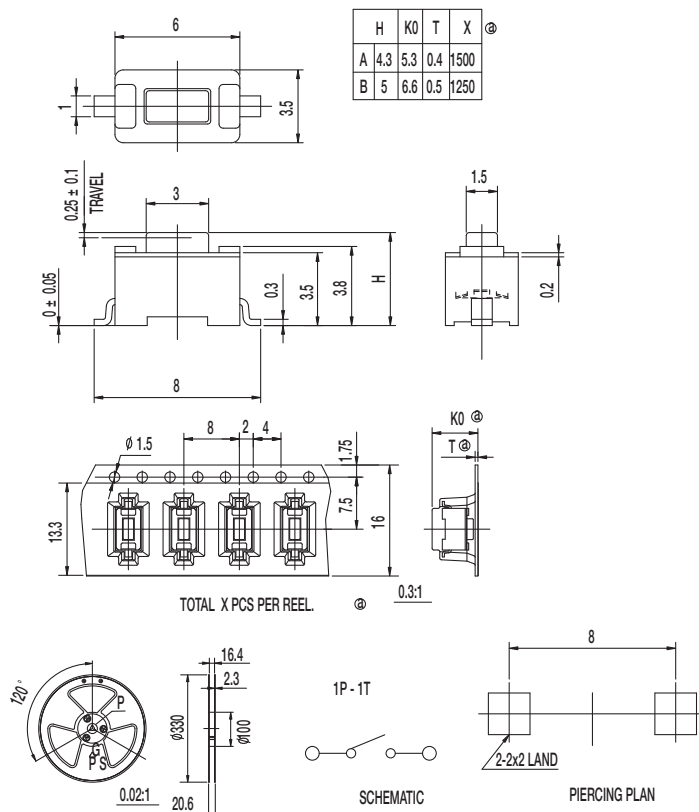
CONTACT RATING: 50mA @ 12 VDC  
 INITIAL CONTACT RESISTANCE: 100 m ohms max.  
 INSULATION RESISTANCE: 100 M ohms min.  
 DIELECTRIC STRENGTH: 250 V AC (50-60 Hz) between open terminals and between the frame and terminal.  
 OPERATING LIFE: 30,000 cycles with load  
 OPERATING FORCE: 180 ± 50gf  
 RELEASING FORCE: 20gf min. (0.2N min.)  
 TRAVEL: 0.25 ± 0.10 mm  
 OPERATING TEMPERATURE: -20°C to 70°C

### Materials

KNOB: PA  
 COVER: SUS  
 HOUSING: PA  
 SPRING PLATE: Silver clad  
 TERMINAL: Silver plated

**NOTE:** Specifications and materials listed above are for switches with standard options. For information on specific and custom switches, please contact Customer Service.

## RS-032G05 SM RT



### Specifications

CONTACT RATING: 50mA @ 12 VDC  
 INITIAL CONTACT RESISTANCE: 100 m ohms max.  
 INSULATION RESISTANCE: 100 M ohms min.  
 DIELECTRIC STRENGTH: 250 V AC (50-60 Hz) between open terminals and between the frame and terminal.  
 OPERATING LIFE: 30,000 cycles with load  
 OPERATING FORCE: 180 ± 50gf  
 RELEASING FORCE: 20gf min. (0.2N min.)  
 TRAVEL: 0.25 ± 0.10 mm  
 OPERATING TEMPERATURE: -20°C to 70°C

### Materials

KNOB: PA  
 COVER: SUS  
 HOUSING: PA  
 SPRING PLATE: Silver clad  
 TERMINAL: Silver plated

**NOTE:** Specifications and materials listed above are for switches with standard options. For information on specific and custom switches, please contact Customer Service.

**C&K**

Dimensions are shown: mm  
 Specifications and dimensions subject to change

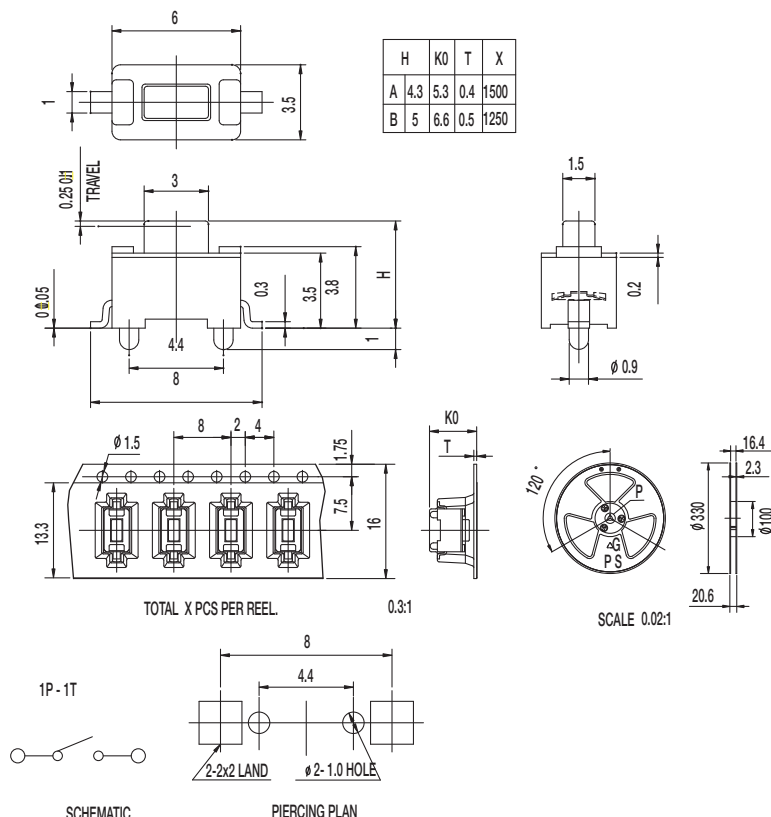
# RS Series Tact Switches

**NEW!**

## RS-032G05 SM EM RT

### Tactile Switches

B



### Specifications

CONTACT RATING: 50mA @ 12 VDC  
 INITIAL CONTACT RESISTANCE: 100 m ohms max.  
 INSULATION RESISTANCE: 100 M ohms min.  
 DIELECTRIC STRENGTH: 250 V AC (50-60 Hz) between open terminals and between the frame and terminal.  
 OPERATING LIFE: 30,000 cycles with load  
 OPERATING FORCE: 180 ± 50gf  
 RELEASING FORCE: 20gf min. (0.2N min.)  
 TRAVEL: 0.25 ± 0.10 mm  
 OPERATING TEMPERATURE: -20°C to 70°C

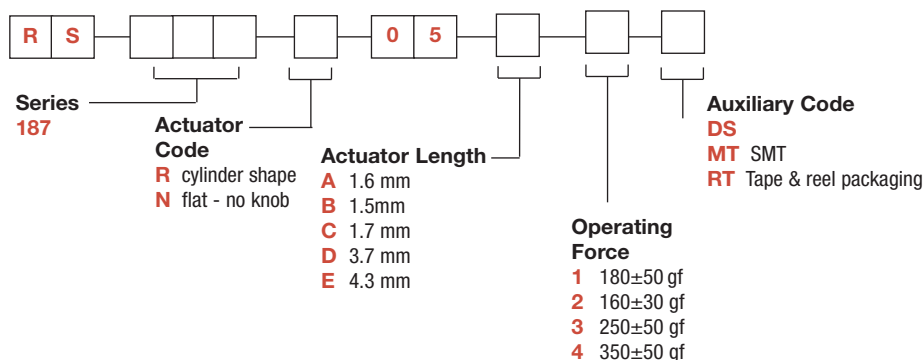
### Materials

KNOB: PA  
 COVER: SUS  
 HOUSING: PA  
 SPRING PLATE: Silver clad  
 TERMINAL: Silver plated

**NOTE:** Specifications and materials listed above are for switches with standard options. For information on specific and custom switches, please contact Customer Service.



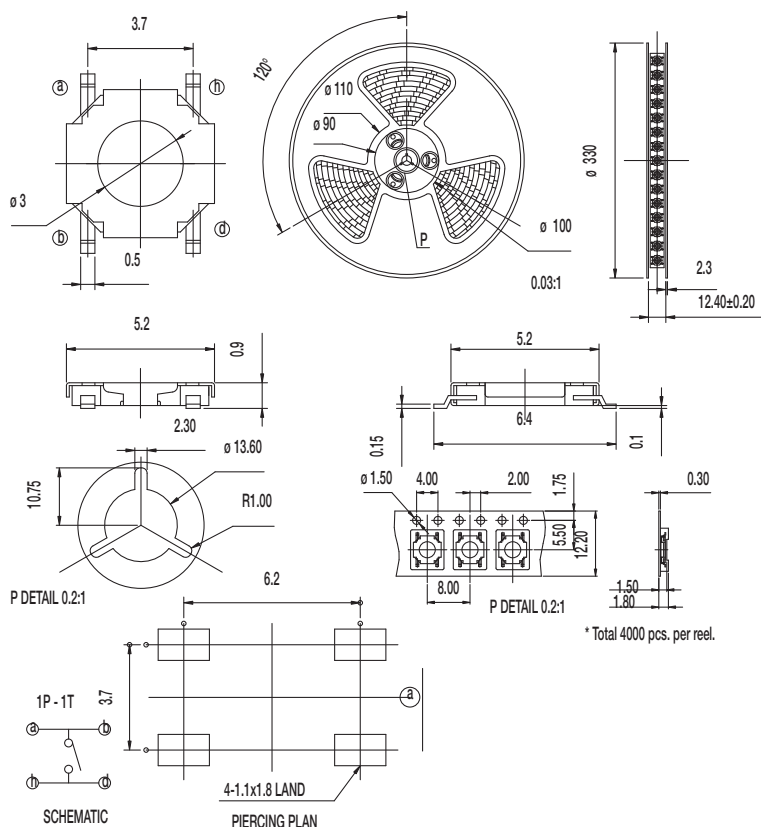
# RS Series Tact Switches



B

## Tactile Switches

## RS-187N05 DS RT



## Specifications

CONTACT RATING: 50mA @ 12 VDC

INITIAL CONTACT RESISTANCE: 100 m ohms max.

INSULATION RESISTANCE: 100 M ohms min.

DIELECTRIC STRENGTH: 250 V AC (50-60 Hz) between open terminals and between the frame and terminal.

OPERATING LIFE: 100,000 cycles with load

OPERATING FORCE:  $180 \pm 50\text{gf}$  ( $1.76 \pm 0.49\text{N}$ )

RELEASING FORCE: 20gf min. (0.2N min.)

TRAVEL:  $0.25 \pm 0.10\text{ mm}$

OPERATING TEMPERATURE: -20°C to 70°C

## Materials

COVER: SUS  
HOUSING: PA  
SPRING PLATE: Silver clad  
TERMINAL: Silver plated

**NOTE:** Specifications and materials listed above are for switches with standard options. For information on specific and custom switches, please contact Customer Service.

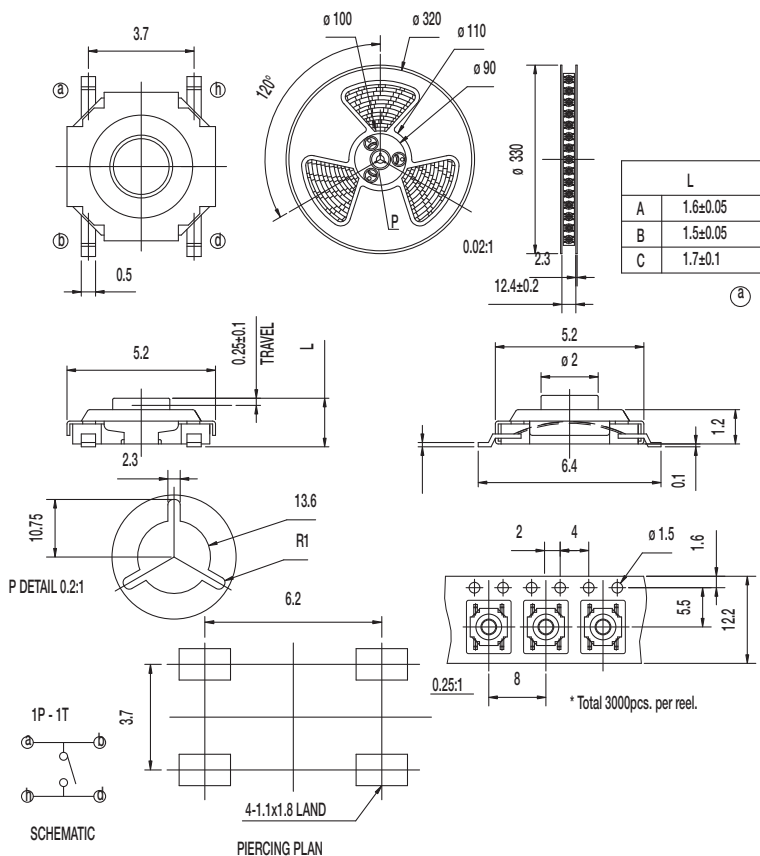
Dimensions are shown: mm  
Specifications and dimensions subject to change

# RS Series Tact Switches

**NEW!**

## RS-187R05 DS MT RT

### Tactile Switches



### Specifications

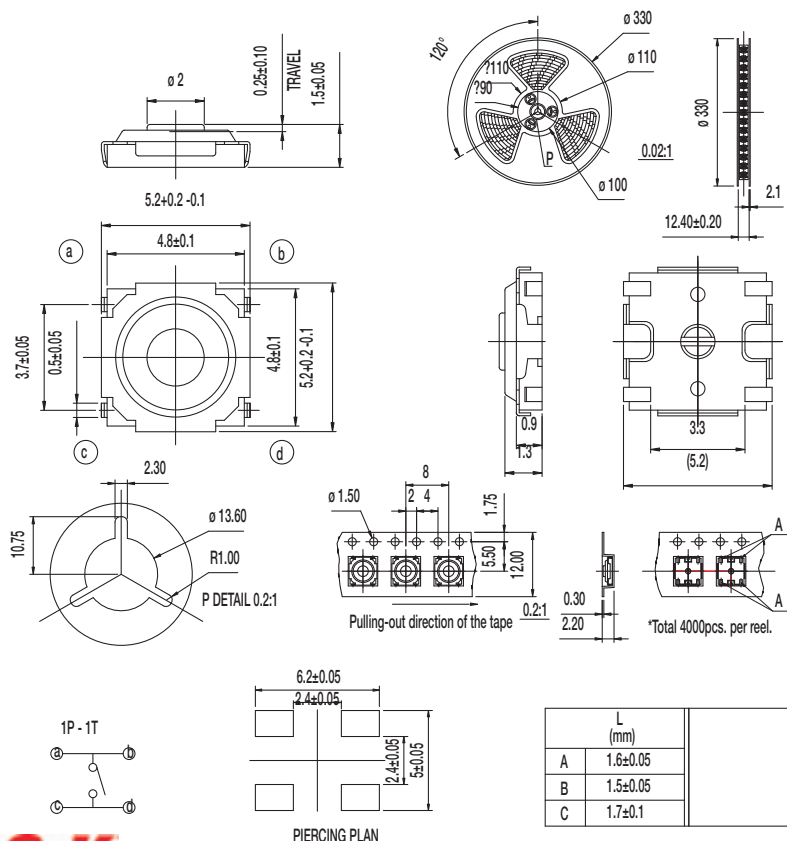
CONTACT RATING: 50mA @ 12 VDC  
 INITIAL CONTACT RESISTANCE: 100 m ohms max.  
 INSULATION RESISTANCE: 100 M ohms min.  
 DIELECTRIC STRENGTH: 250 V AC (50-60 Hz) between open terminals and between the frame and terminal.  
 OPERATING LIFE: 50,000 cycles with load  
 OPERATING FORCE: 180 ± 50gf (1.76 ± 0.49N)  
 RELEASING FORCE: 20gf min. (0.2N min.)  
 TRAVEL: 0.25 ± 0.10 mm  
 OPERATING TEMPERATURE: -20°C to 70°C

### Materials

COVER: SUS  
 HOUSING: PA  
 SPRING PLATE: Silver clad  
 TERMINAL: Silver plated

**NOTE:** Specifications and materials listed above are for switches with standard options. For information on specific and custom switches, please contact Customer Service.

## RS-187R05B DS-MT U RT



### Specifications

CONTACT RATING: 50mA @ 12 VDC  
 INITIAL CONTACT RESISTANCE: 100 m ohms max.  
 INSULATION RESISTANCE: 100 M ohms min.  
 DIELECTRIC STRENGTH: 250 V AC (50-60 Hz) between open terminals and between the frame and terminal.  
 OPERATING LIFE: 50,000 cycles with load  
 OPERATING FORCE: 180 ± 50gf (1.764 ± 0.49N)  
 RELEASING FORCE: 20gf min. (0.2N min.)  
 TRAVEL: 0.25 ± 0.10 mm  
 OPERATING TEMPERATURE: -20°C to 70°C

### Materials

KNOB: C2680R  
 COVER: SUS  
 HOUSING: PA  
 SPRING PLATE: Silver clad  
 TERMINAL: Silver plated

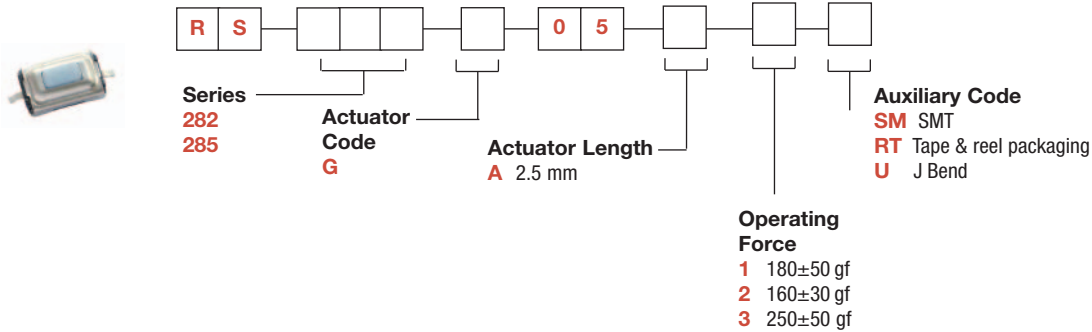
**NOTE:** Specifications and materials listed above are for switches with standard options. For information on specific and custom switches, please contact Customer Service.



Dimensions are shown: mm  
 Specifications and dimensions subject to change

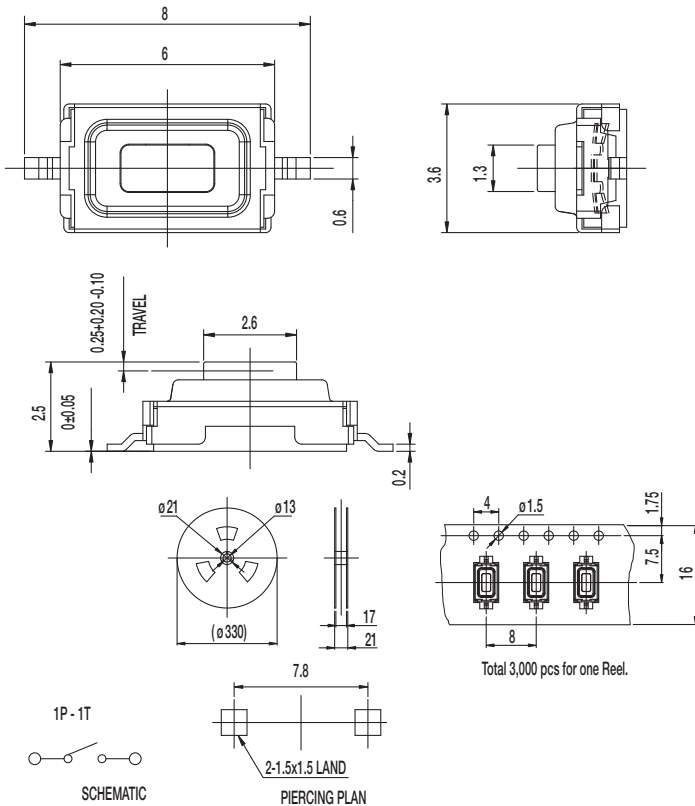
**NEW!**

# RS Series Tact Switches



**Tactile Switches**

## RS-282G05 SM RT



## Specifications

CONTACT RATING: 50mA @ 12 VDC  
INITIAL CONTACT RESISTANCE: 100 m ohms max.  
INSULATION RESISTANCE: 100 M ohms min.  
DIELECTRIC STRENGTH: 250 V AC (50-60 Hz) between open terminals and between the frame and terminal.  
OPERATING LIFE: 50,000 cycles with load  
OPERATING FORCE: 250 ± 50gf  
RELEASING FORCE: 20gf min. (0.2N min.)  
TRAVEL: 0.25 ± 0.10 mm  
OPERATING TEMPERATURE: -20°C to 70°C

## Materials

KNOB: PA  
COVER: SUS  
HOUSING: PA  
SPRING PLATE: Silver clad  
TERMINAL: Silver plated

**NOTE:** Specifications and materials listed above are for switches with standard options. For information on specific and custom switches, please contact Customer Service.



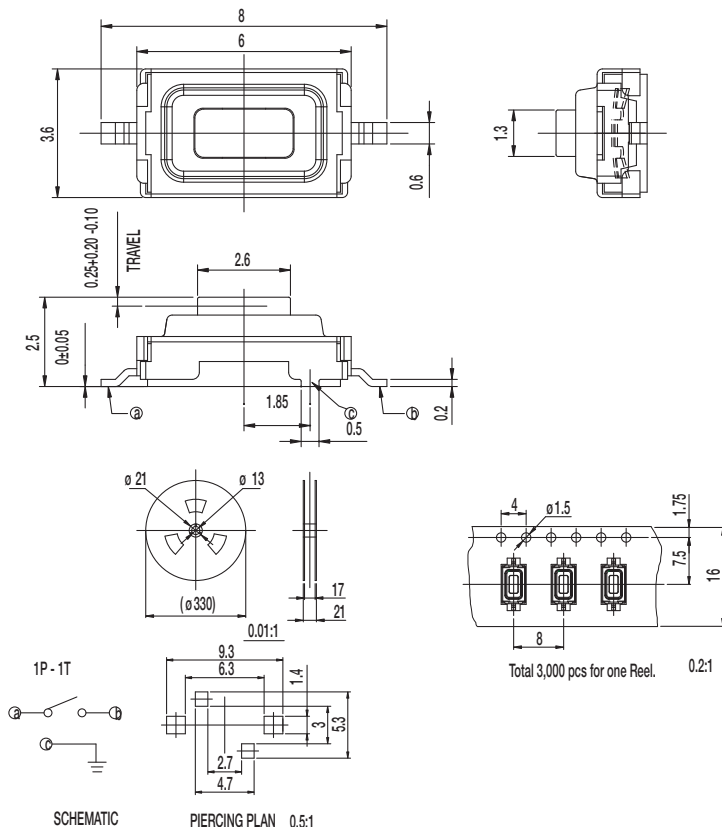
# RS Series Tact Switches

**NEW!**

## RS-285G05 SM RT

### Tactile Switches

B



### Specifications

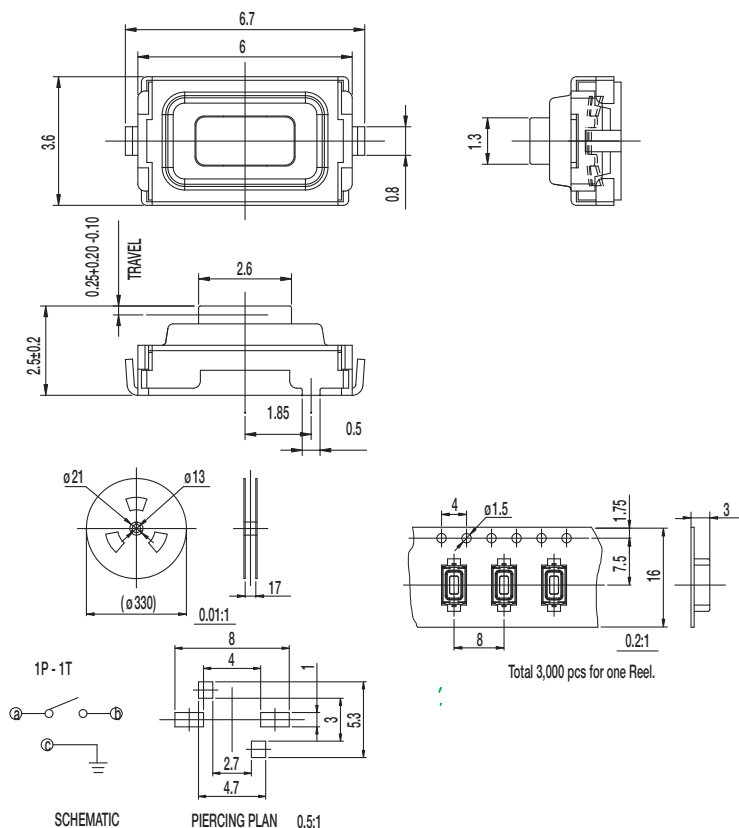
CONTACT RATING: 50mA @ 12 VDC  
 INITIAL CONTACT RESISTANCE: 100 m ohms max.  
 INSULATION RESISTANCE: 100 M ohms min.  
 DIELECTRIC STRENGTH: 250 V AC (50-60 Hz) between open terminals and between the frame and terminal.  
 OPERATING LIFE: 50,000 cycles with load  
 OPERATING FORCE: 180 ± 50gf (1.76 ± 0.49N)  
 RELEASING FORCE: 20gf min. (0.2N min.)  
 TRAVEL: 0.25 ± 0.10 mm  
 OPERATING TEMPERATURE: -20°C to 70°C

### Materials

KNOB: PA  
 COVER: SUS  
 HOUSING: PA  
 SPRING PLATE: Silver clad  
 TERMINAL: Silver plated

**NOTE:** Specifications and materials listed above are for switches with standard options. For information on specific and custom switches, please contact Customer Service.

## RS-285G05 U RT



### Specifications

CONTACT RATING: 50mA @ 12 VDC  
 INITIAL CONTACT RESISTANCE: 100 m ohms max.  
 INSULATION RESISTANCE: 100 M ohms min.  
 DIELECTRIC STRENGTH: 250 V AC (50-60 Hz) between open terminals and between the frame and terminal.  
 OPERATING LIFE: 100,000 cycles with load  
 OPERATING FORCE: 160 ± 50gf  
 RELEASING FORCE: 50gf min.  
 TRAVEL: 0.25 ± 0.10 mm  
 OPERATING TEMPERATURE: -20°C to 70°C

### Materials

COVER: SUS  
 HOUSING: PA  
 SPRING PLATE: Silver clad  
 TERMINAL: Silver plated

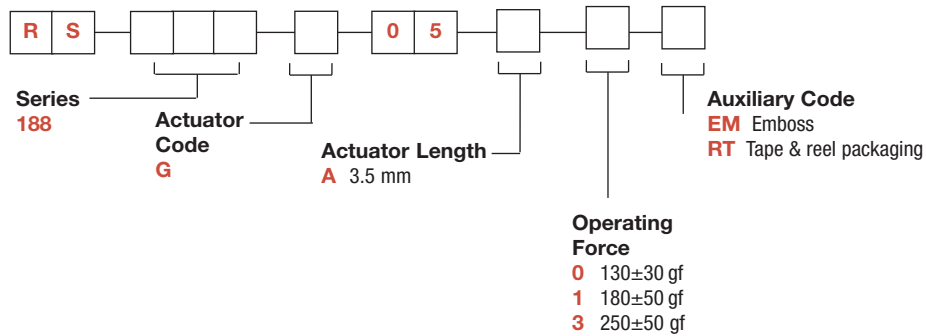
**NOTE:** Specifications and materials listed above are for switches with standard options. For information on specific and custom switches, please contact Customer Service.



Dimensions are shown: mm  
 Specifications and dimensions subject to change

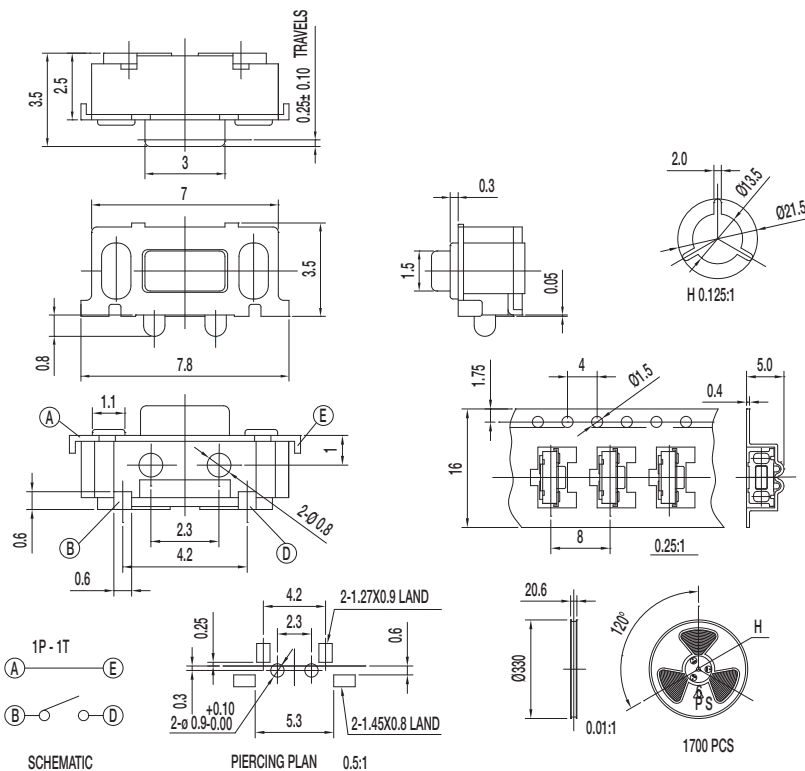
**NEW!**

# RS Series Tact Switches



**Tactile Switches**

## RS-188G05A EM RT



### Specifications

CONTACT RATING: 50mA @ 12 VDC  
INITIAL CONTACT RESISTANCE: 100 m ohms max.  
INSULATION RESISTANCE: 100 M ohms min.  
DIELECTRIC STRENGTH: 250 V AC (50-60 Hz) between open terminals and between the frame and terminal.  
OPERATING LIFE: 30,000 cycles with load  
OPERATING FORCE: 180 ± 50gf  
RELEASING FORCE: 20gf min. (0.2N min.)  
TRAVEL: 0.25 ± 0.10 mm  
OPERATING TEMPERATURE: -20°C to 70°C

### Materials

KNOB: PA  
COVER: SPTE  
HOUSING: PA  
SPRING PLATE: SUS  
TERMINAL: Silver plated

**NOTE:** Specifications and materials listed above are for switches with standard options. For information on specific and custom switches, please contact Customer Service.



Dimensions are shown: mm  
Specifications and dimensions subject to change

# Mouser Electronics

Authorized Distributor

Click to View Pricing, Inventory, Delivery & Lifecycle Information:

[C&K Switches:](#)

[RS285G05A2URT](#)