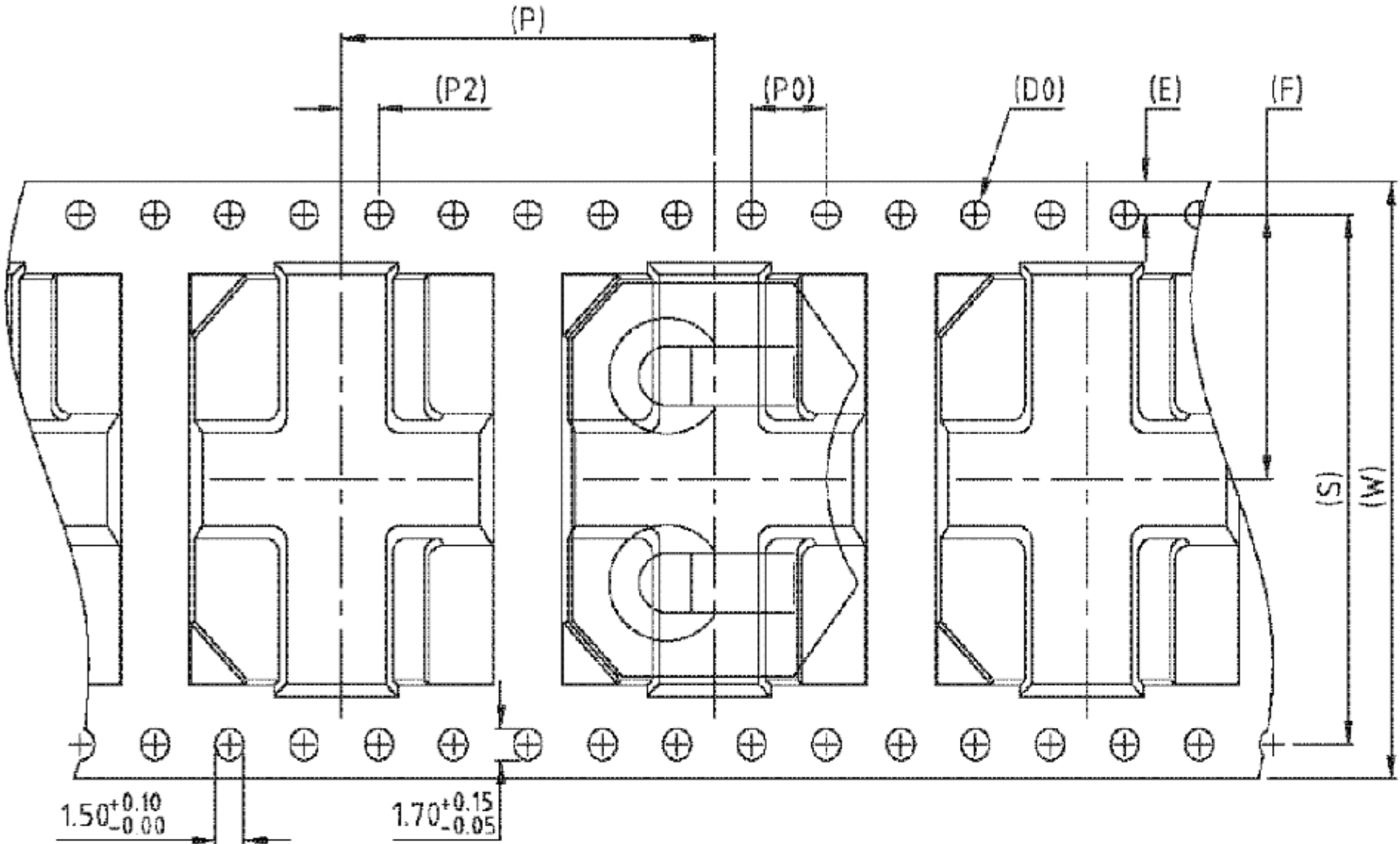
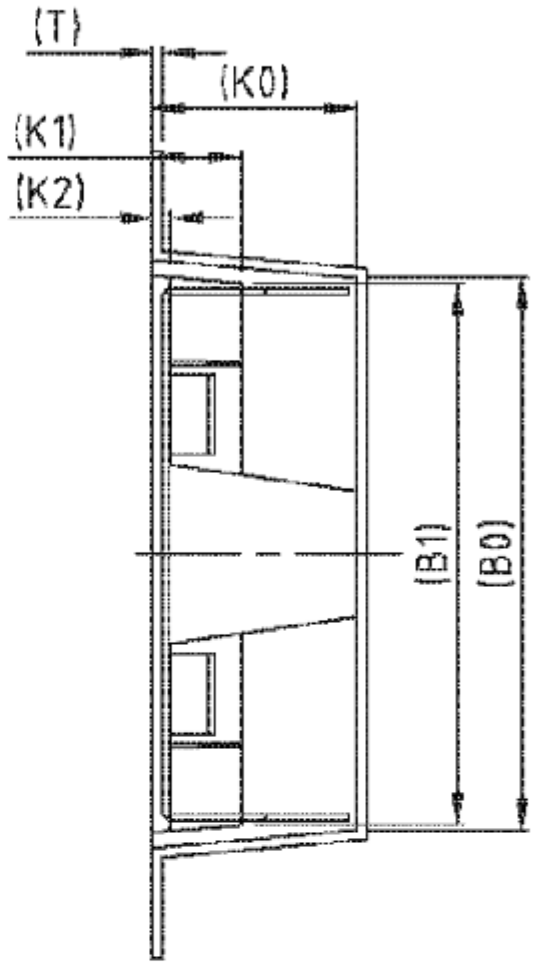
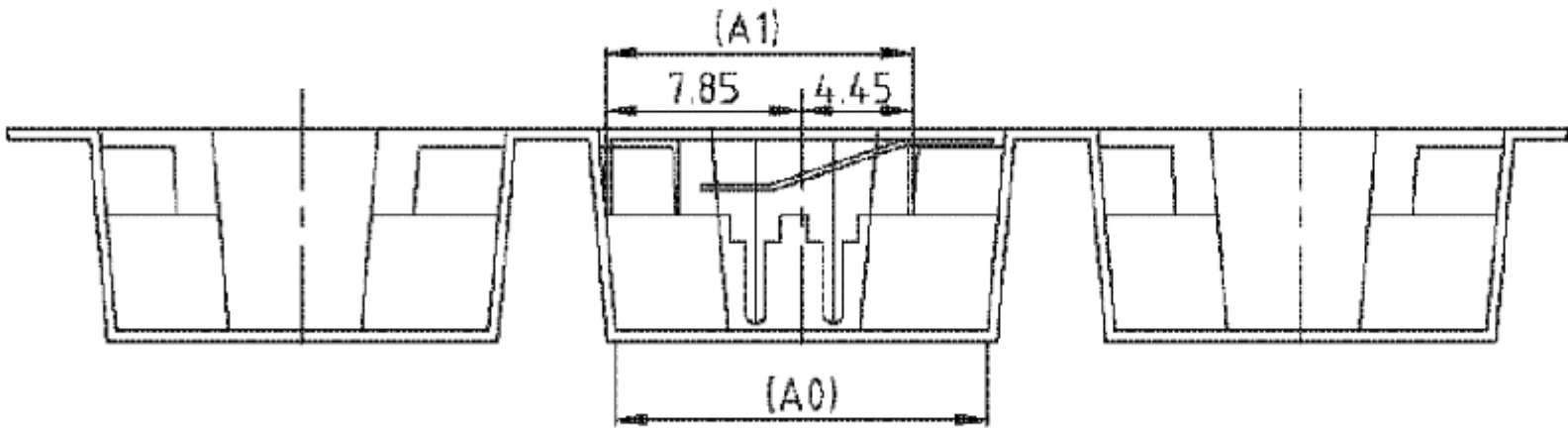


D
C
B
A



$1.50^{+0.10}_{-0.00}$ $1.70^{+0.15}_{-0.05}$



- NOTES: (UNLESS OTHERWISE SPECIFIED)
1. ALL DIMENSIONS ARE IN MILLIMETERS [INCHES].
 2. 10 SPROCKET HOLE PITCH CUMULATIVE TOLERANCE ± 0.2 MM.
 3. MATERIAL: BLACK POLYSTYRENE.
 4. PACKING LENGTH PER 22" REEL: 27.0 m.
 5. COMPONENT LOAD PER 13" REEL: 400.
 6. ANGLE TOLERANCE: $\pm 1^\circ$
 7. CARRIER CAMBER IS WITHIN 1 mm IN 250 mm.

W	32.00±0.30	P	20.00±0.10	A0	14.90±0.10	B0	21.90±0.10
S	28.40±0.10	P0	4.00±0.10	A1	12.30 ^{+0.15} _{-0.05}	B1	21.50±0.10
E	1.75±0.10	P2	2.00±0.10	A2		B2	
F	14.20±0.15	D0	∅1.50 ^{+0.10} _{-0.00}	K0	8.10±0.10	K2	0.70±0.10
T	0.40±0.05	D1		K1	3.50±0.10	COLOR: BK/ANT	

SIZE	DWG. NO.	REV
B	BAT-HLD-001-THM-TR	C
SCALE: 3:1	DO NOT SCALE DRAWING	SHEET 2 OF 2

Mouser Electronics

Authorized Distributor

Click to View Pricing, Inventory, Delivery & Lifecycle Information:

[Linx Technologies:](#)

[BAT-HLD-001-THM](#) [BAT-HLD-001-THM-TR](#)