



5 TABLE I

Electrical Data	Detail
Impedance	50 $\Omega$
Frequency Range	0 to 6 GHz
Insulation Resistance	$\geq 5000 \text{ M}\Omega$
Voltage Rating	750 V RMS
Contact Resistance	Center $\leq 5.0 \text{ m}\Omega$ Outer: $\leq 1.0 \text{ m}\Omega$
VSWR	$\leq 1.35 @ 6 \text{ GHz}$

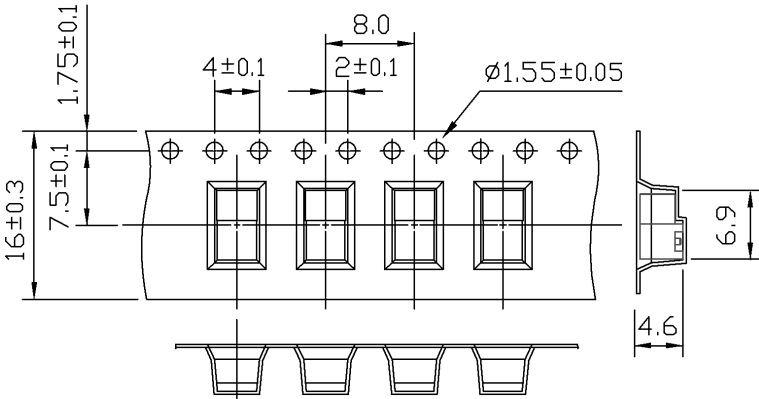
6 TABLE II

Environmental Data	Detail
Corrosion (Salt Spray)	MIL-STD-202 METHOD 101 TEST CONDITION B
Thermal Shock	MIL-STD-202 METHOD 107 TEST CONDITION B
Vibration	MIL-STD-202 METHOD 204 TEST CONDITION D
Mechanical Shock	MIL-STD-202 METHOD 213 TEST CONDITION I
Temperature Range	-65 °C to +165 °C
Environmental Compliance	RoHS

7 TABLE III

Mechanical Data	Detail
Mounting Type	Panel Mount, Surface Mount, Right Angle
Fastening Type	Snap-On Coupling
Connector Durability	500 cycles min.
Weight	0.37 g (0.01 oz)

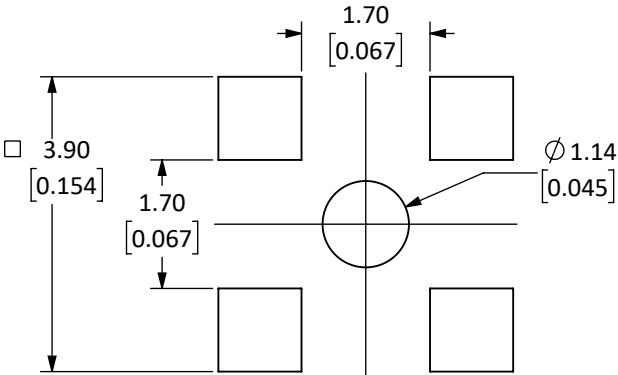
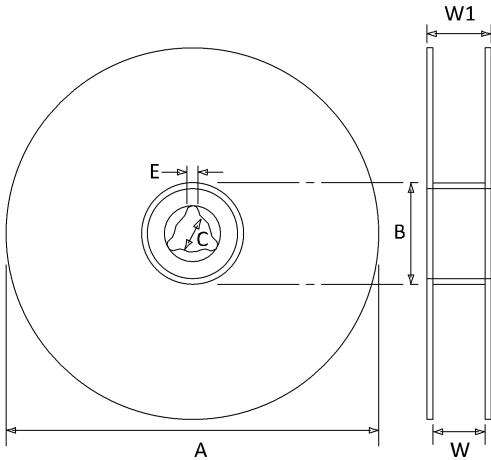
TAPE DIMENSIONS



REEL DIMENSIONS

SYMBOL	DIMENSION (mm)	TOLERANCE
A	330	+ 1.50
B	100	+ 1.00
C	13.3	+ 0.30
E	2.5	+ 0.30
W	24.5	+1.50 -0.10
W1	28.7	+ 0.40

1750 PCS/REEL



RECOMMENDED FOOTPRINT

SIZE	DWG. NO.	REV
<b>A</b>	<b>CONMMCX002-SMD</b>	<b>E</b>
SCALE: 4:1	DO NOT SCALE DRAWING	SHEET 2 OF 2

# Mouser Electronics

Authorized Distributor

Click to View Pricing, Inventory, Delivery & Lifecycle Information:

[Linx Technologies:](#)

[CONMMCX002-SMD](#)