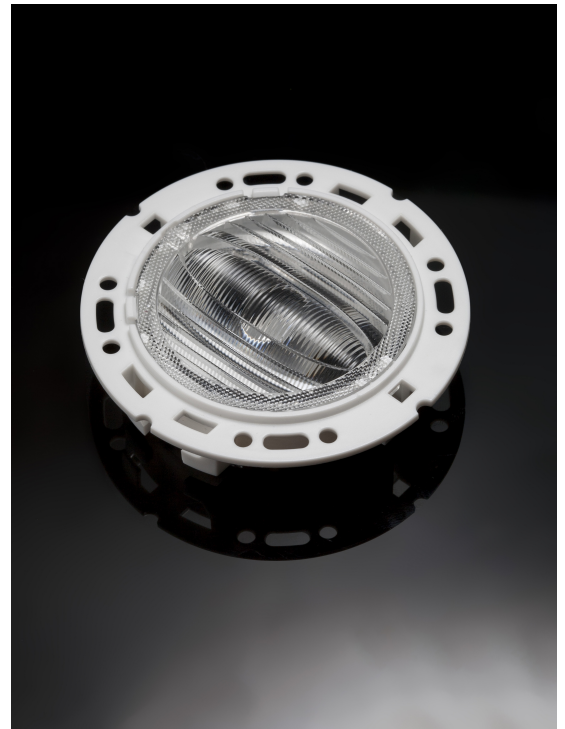


RONDA-O

~50° + 30° oval beam with holder A compatible with 3rd party connectors from TE, Bender+Wirth and IDEAL.

SPECIFICATION:

Dimensions	Ø 69.9
Height	17.3 mm
Fastening	socket
ROHS compliant	yes ⓘ



MATERIALS:

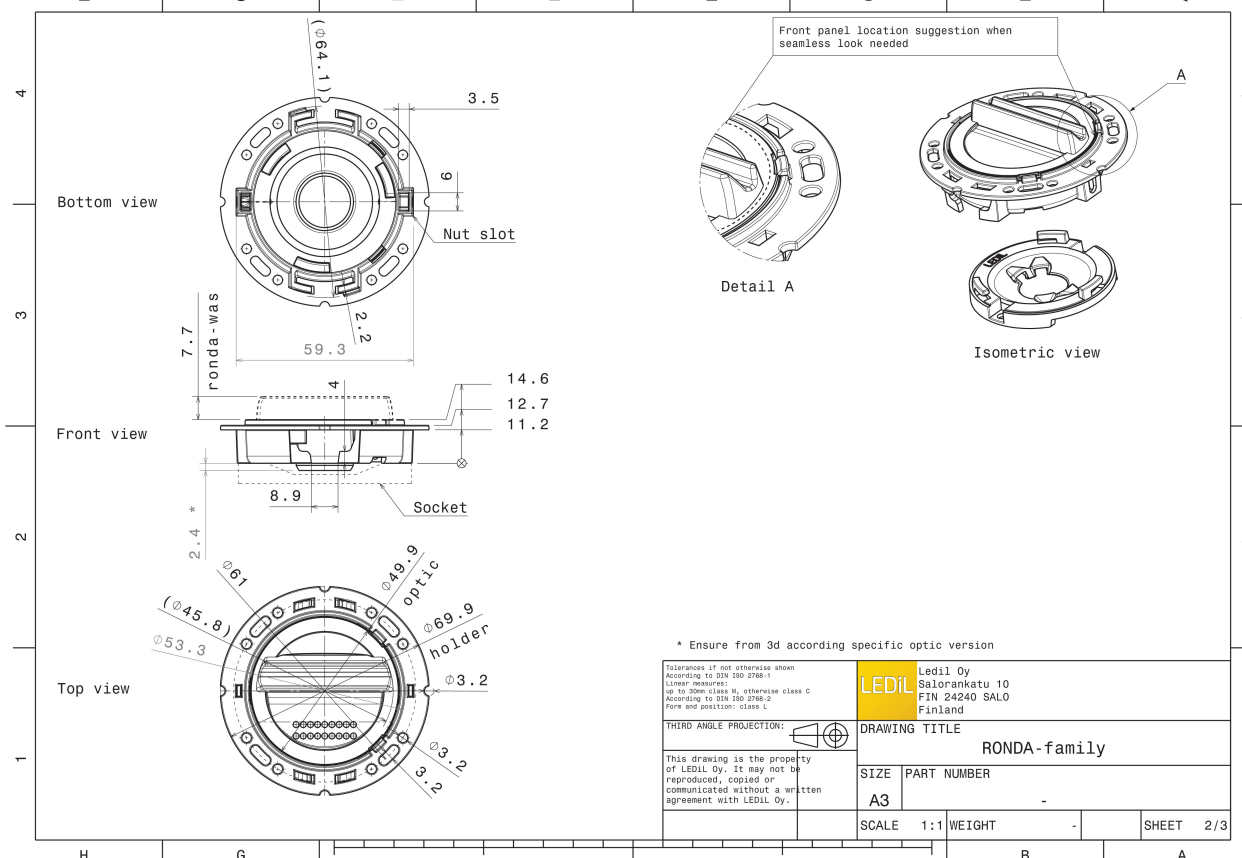
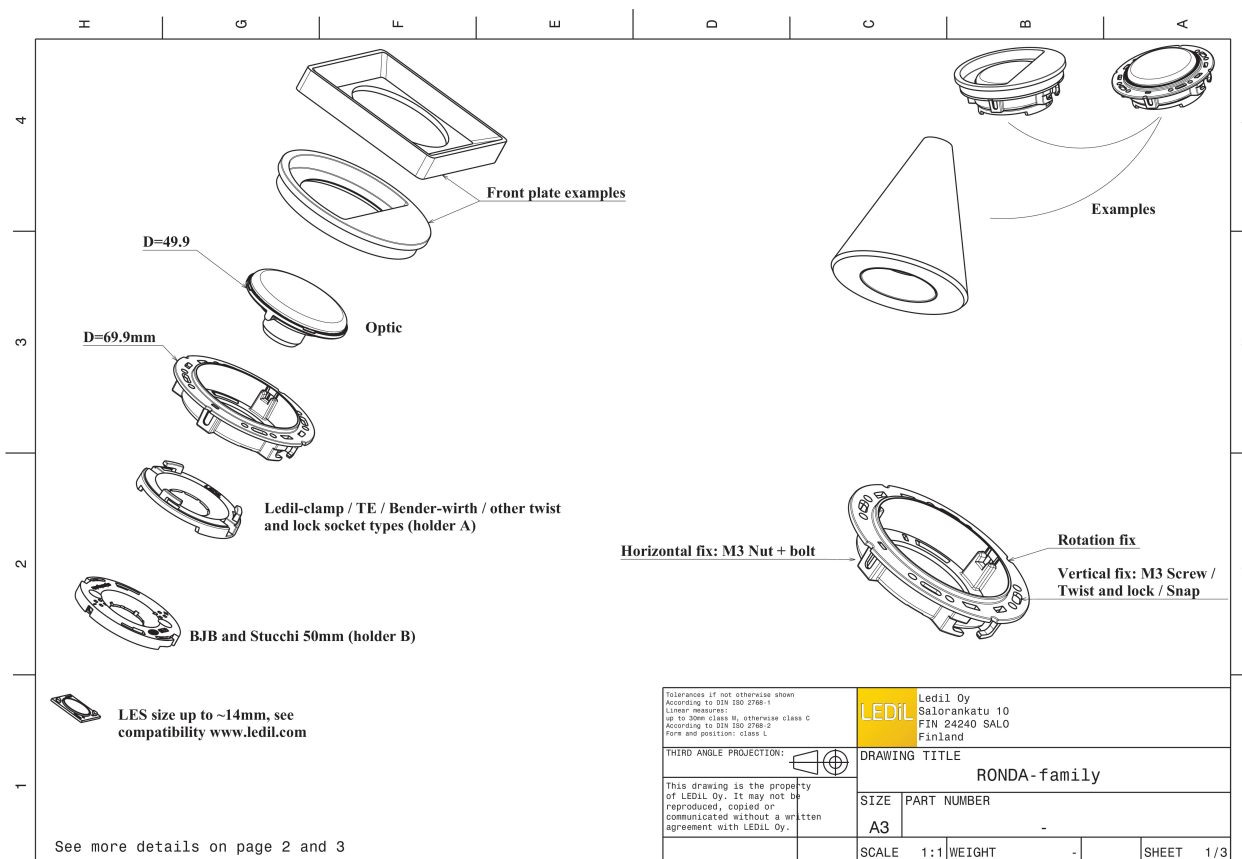
Component	Type	Material	Colour	Finish	Length (mm)
F15990_RONDA-O	Single lens	PMMA	clear		
F15155_RONDA-HLD-A	Holder	PC	white		

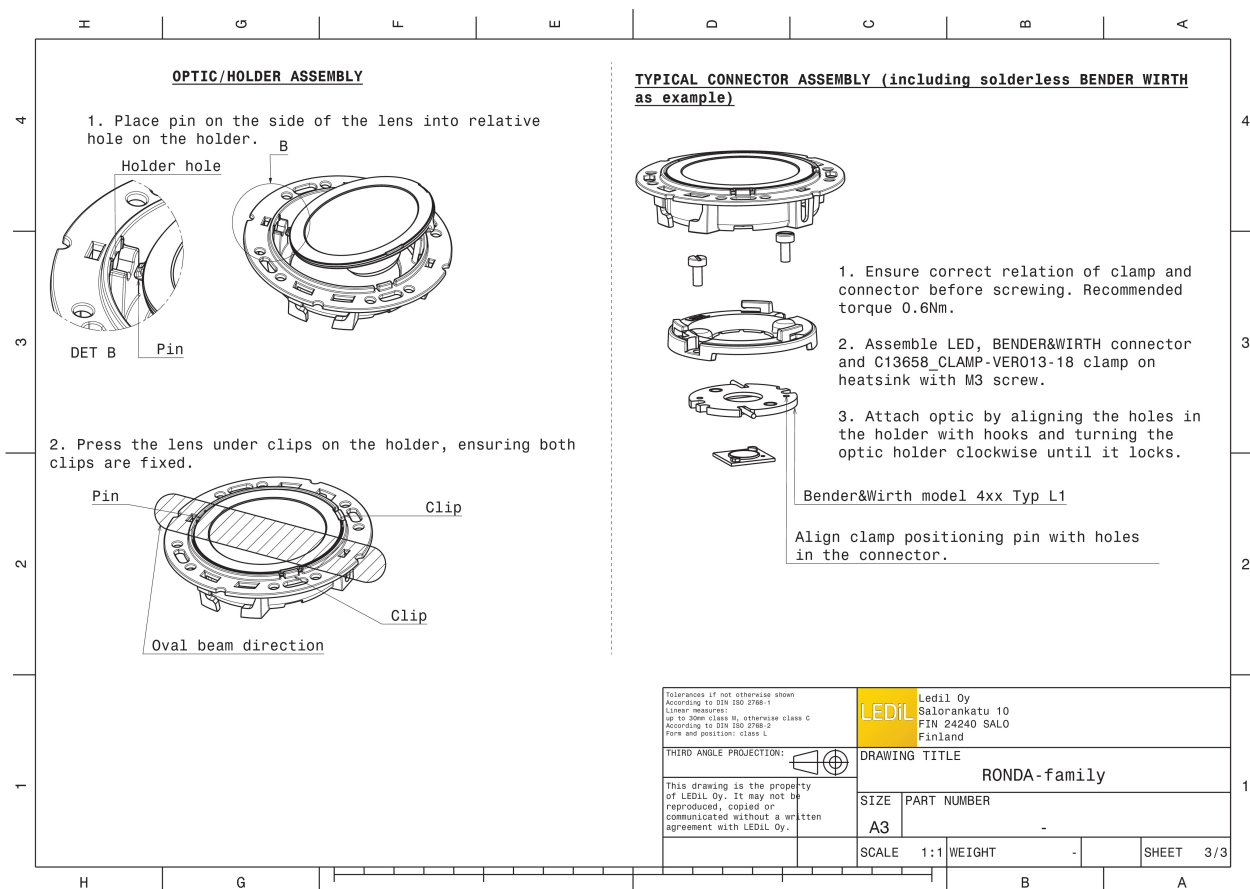
ORDERING INFORMATION:

Quantities for one set:

Single lens	1
Holder	1

Component		Qty in box	MOQ	MPQ	Box weight (kg)
F15990_RONDA-O	Single lens	420	120	30	6.5
» Box size: 480 x 280 x 300 mm					
F15155_RONDA-HLD-A	Holder	420	120	30	4.4
» Box size: 480 x 280 x 300 mm					



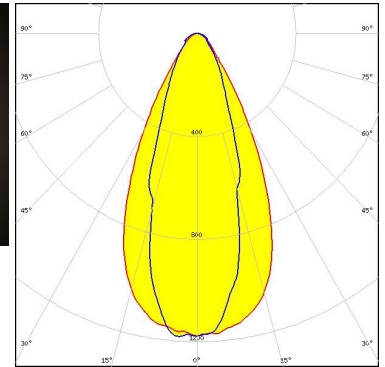
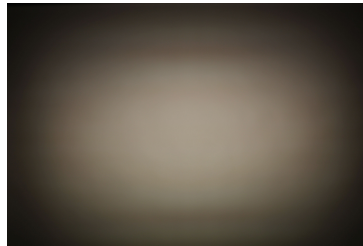


See also our general installation guide: www.ledil.com/installation_guide

OPTICAL RESULTS (MEASURED):



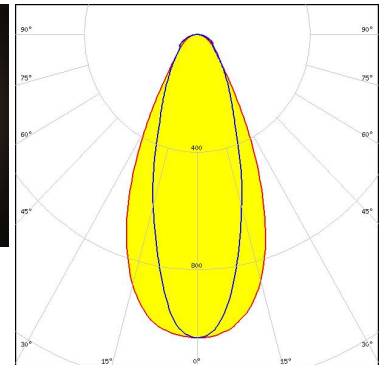
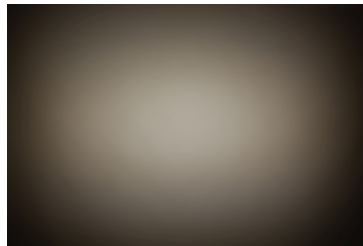
LED Vero SE 13
 FWHM / FWTM 53.0 + 36.0° / 84.0 + 79.0°
 Efficiency 88 %
 Peak intensity 1.2 cd/lm
 LEDs/each optic 1
 Light colour/type White
 Required components:
 C16402_CLAMP-VEROSE-13-18



Light distribution files

CITIZEN

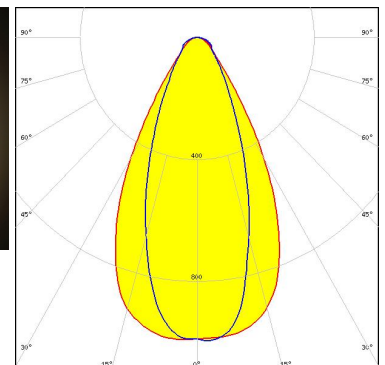
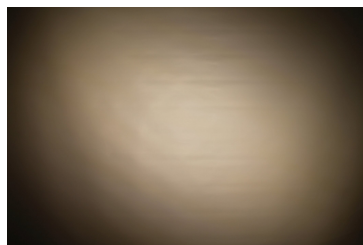
LED CLL03x/CLU03x
 FWHM / FWTM 51.0 + 35.0° / 92.0 + 91.0°
 Efficiency 85 %
 Peak intensity 1 cd/lm
 LEDs/each optic 1
 Light colour/type White
 Required components:
 C16791_CLAMP-Z45-A
 TE Connectivity: 2325807-3



Light distribution files



LED CMA1840
 FWHM / FWTM 58.0 + 40.0° / 90.0 + 86.0°
 Efficiency 88 %
 Peak intensity 1 cd/lm
 LEDs/each optic 1
 Light colour/type White
 Required components:
 C14123_CLAMP-CXA15-18

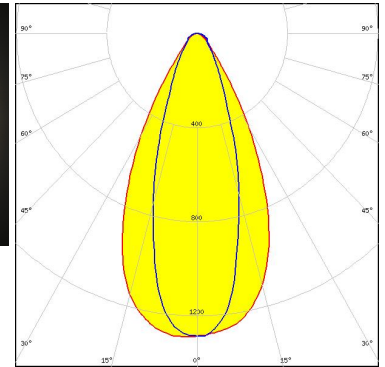
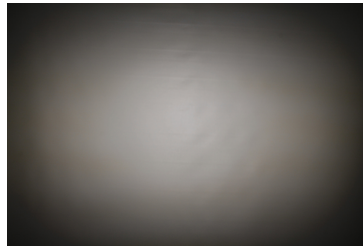


Light distribution files

OPTICAL RESULTS (MEASURED):



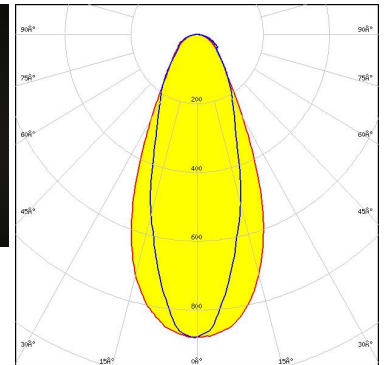
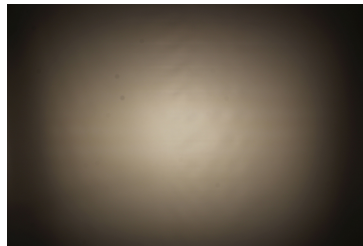
LED CXA/B 1816 & CXA/B 1820 & CXA 1850
FWHM / FWTM 53.0 + 34.0° / 83.0 + 72.0°
Efficiency 91 %
Peak intensity 1.3 cd/lm
LEDs/each optic 1
Light colour/type White
Required components:



Light distribution files



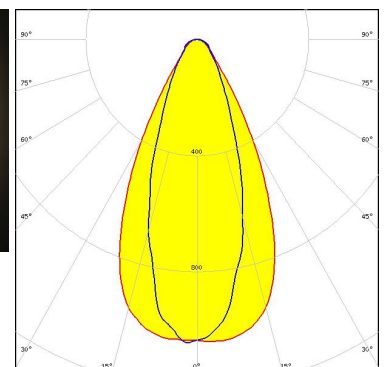
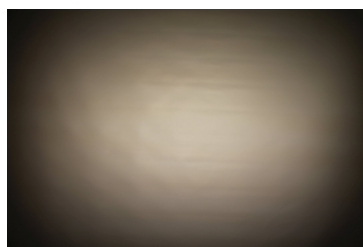
LED PrevaLED Core G7 L15 H1
FWHM / FWTM 42.0° / 99.0°
Efficiency 77 %
Peak intensity 0.9 cd/lm
LEDs/each optic 1
Light colour/type White
Required components:
C16685_CLAMP-PRV-A



Light distribution files



LED Fortimo SLM L13 CoB
FWHM / FWTM 54.0 + 37.0° / 85.0 + 81.0°
Efficiency 83 %
Peak intensity 1.1 cd/lm
LEDs/each optic 1
Light colour/type White
Required components:
TE Connectivity: 2213130-2 + OPTIC CLIP Z50 TYPE1 2213194-1



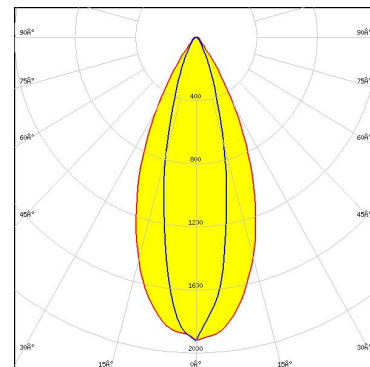
Light distribution files

OPTICAL RESULTS (SIMULATED):



LED V10 Gen7
FWHM / FWTM 46.0 + 25.0° / 74.0 + 53.0°
Efficiency 89 %
Peak intensity 1.9 cd/lm
LEDs/each optic 1
Light colour/type White
Required components:

Bender Wirth: 634b 3Hook

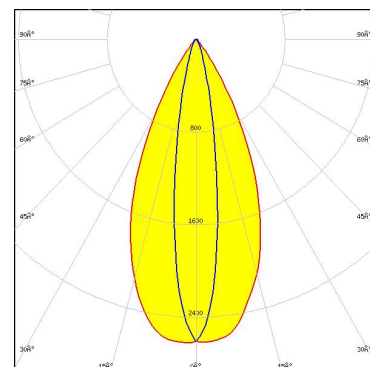


Light distribution files



LED V6 HD Gen 7
FWHM / FWTM 48.0 + 17.0° / 73.0 + 36.0°
Efficiency 91 %
Peak intensity 2.6 cd/lm
LEDs/each optic 1
Light colour/type White
Required components:

Bender Wirth: 634c 3Hook

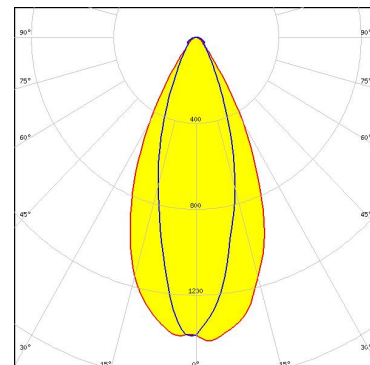


Light distribution files



LED VERO13
FWHM / FWTM 49.0 + 30.0° / 78.0 + 49.0°
Efficiency 86 %
Peak intensity 1.5 cd/lm
LEDs/each optic 1
Light colour/type White
Required components:

C13658_CLAMP-VERO13-18

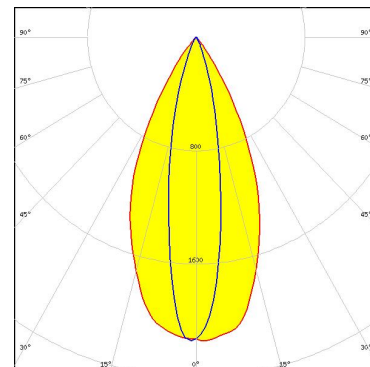


Light distribution files

OPTICAL RESULTS (SIMULATED):



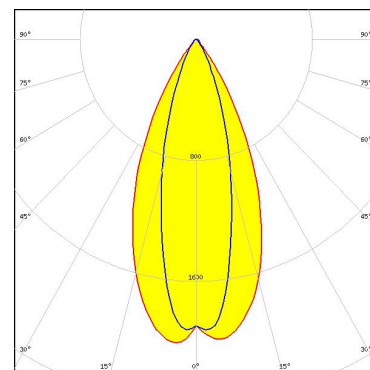
LED CXA/B 15xx
FWHM / FWTM 49.0 + 21.0° / 74.0 + 43.0°
Efficiency 0 %
Peak intensity 2.1 cd/lm
LEDs/each optic 1
Light colour/type White
Required components:
C14123_CLAMP-CXA15-18



Light distribution files



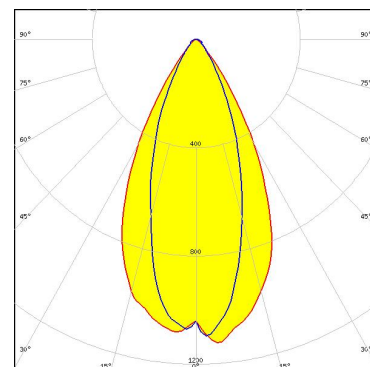
LED CXA/B 1816 & CXA/B 1820 & CXA 1850
FWHM / FWTM 48.0 + 27.0° / 75.0 + 57.0°
Efficiency 0 %
Peak intensity 1.6 cd/lm
LEDs/each optic 1
Light colour/type White
Required components:
C14123_CLAMP-CXA15-18



Light distribution files



LED CXA/B 1830
FWHM / FWTM 54.0 + 37.0° / 82.0 + 72.0°
Efficiency 77 %
Peak intensity 1.1 cd/lm
LEDs/each optic 1
Light colour/type White
Required components:
C13658_CLAMP-VERO13-18



Light distribution files

Bender Wirth: 457 Typ L1

OPTICAL RESULTS (SIMULATED):



LED	COB L-Type (LES 9)
FWHM / FWTM	83.0°
Efficiency	86 %
LEDs/each optic	1
Light colour/type	White
Required components:	

Light distribution files

GENERAL INFORMATION:

NOTE: The typical beam angle will be changed by different color, chip size and chip position tolerance. The typical total beam angle is the full angle measured where the luminous intensity is half of the peak value.

Due to use of high power COB's with this product, special attention to proper thermal design is highly recommended. LEDiL has no liability for direct, indirect or consecutive damages arising from the LEDiL products being used outside of the recommended temperature range.

MATERIALS:

As part of our continuous research and improvement processes, and to ensure the best possible quality and availability of our products, LEDiL reserves the right to change material grades without notice.

PRODUCT DATA USER AGREEMENT AND DISCLAIMER:

The measured data in the provided downloadable LEDiL Product Datasheets and Mechanical 2D-Drawings is rounded and provided as reference for planning. LEDiL Oy's optical specifications have been verified by conducting performance testing of the products in accordance with the company's quality system. The reported data are averaged results of multiple measurements with typical variation. LEDiL Oy reserves the right to without prior notification make changes and improvements to its products.

LEDiL Oy assumes neither warranty, nor guarantee nor any other liability of any kind for the contents and correctness of the provided data. The provided data has been generated with highest diligence but the provided data may in reality not represent the complete possible variation range of all intrinsic parameters. Therefore, in certain cases a deviation from the provided data could occur.

LEDiL Oy reserves the right to undertake technical changes of its products without further notification which could lead to changes in the provided data. LEDiL Oy assumes no liability of any kind for the possible deviation from any provided data or any other damage resulting from the usage of the provided data.

The user agrees to this disclaimer and user agreement with the download or usage of the provided files.

LEDiL Oy

Joensuunkatu 7
FI-24240 SALO
Finland

LEDiL Inc.

228 West Page Street
Suite D
Sycamore IL 60178
USA

Ledil Optics Technology (Shenzhen) Co., Ltd.

405 , Block B
Casic Motor Building
Shenzhen 518057
P.R.CHINA

Local sales and technical support

[www.ledil.com/
where_to_buy](http://www.ledil.com/where_to_buy)

Shipping locations

Poznan, Poland
Hong Kong, China

Distribution Partners

[www.ledil.com/
where_to_buy](http://www.ledil.com/where_to_buy)

Mouser Electronics

Authorized Distributor

Click to View Pricing, Inventory, Delivery & Lifecycle Information:

[Ledil:](#)

[FN15993_RONDA-O](#)