

LM1-RS

~20° spot beam optimized for CREE MC-E. 14.04 mm high assembly with installation tape.

SPECIFICATION:

Dimensions	Ø 21.6 mm
Height	14 mm
Fastening	tape
ROHS compliant	yes ⓘ

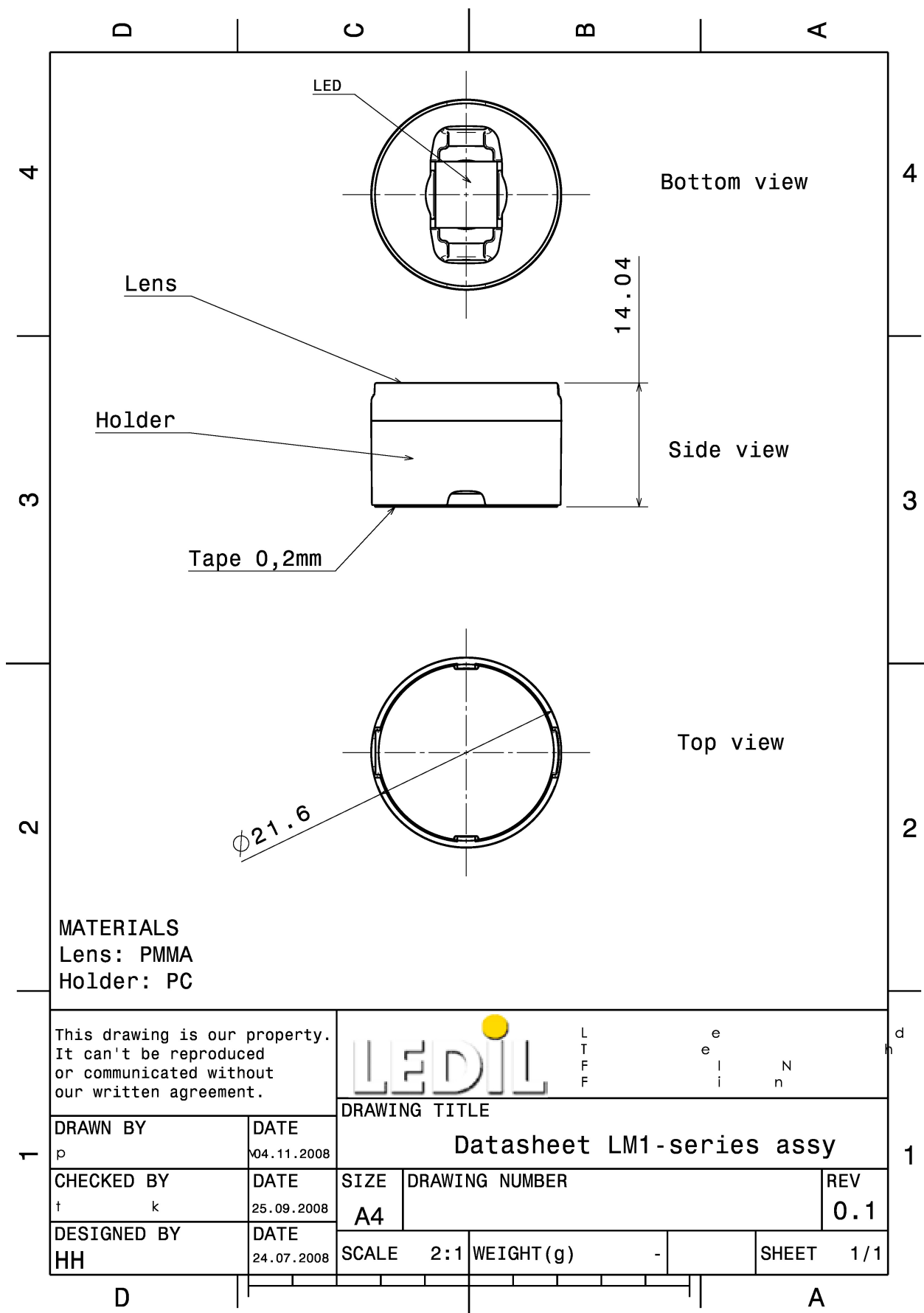


MATERIALS:

Component	Type	Material	Colour	Finish	Length (mm)
LM1-RS	Single lens	PMMA	clear		
LM-LH1-TAPE-BLK	Holder	PC	black		
LEILA-TAPE	Tape	PET tape 0,2mm	black		

ORDERING INFORMATION:

Component	Qty in box	MOQ	MPQ	Box weight (kg)
FA10613_LM1-RS	2160		144	10.2
» Box size:				



See also our general installation guide: www.ledil.com/installation_guide

OPTICAL RESULTS (MEASURED):

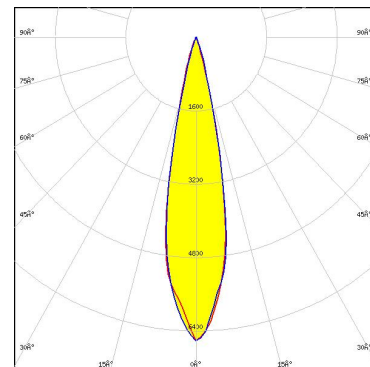


LED	MC-E
FWHM / FWTM	21.0°
Efficiency	89 %
LEDs/each optic	1
Light colour/type	White
Required components:	

Light distribution files

CREE
LEDs

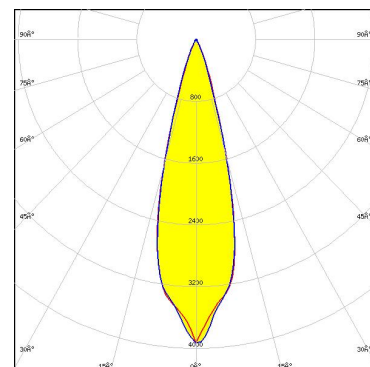
LED	MC-E
FWHM / FWTM	22.0° / 34.0°
Efficiency	94 %
Peak intensity	6.6 cd/lm
LEDs/each optic	1
Light colour/type	White
Required components:	



Light distribution files



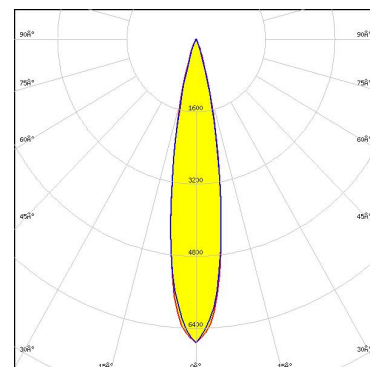
LED	MK-R
FWHM / FWTM	28.0° / 44.0°
Efficiency	92 %
Peak intensity	3.9 cd/lm
LEDs/each optic	1
Light colour/type	White
Required components:	



Light distribution files



LED	MX-6
FWHM / FWTM	20.0° / 36.0°
Efficiency	94 %
Peak intensity	6.7 cd/lm
LEDs/each optic	1
Light colour/type	White
Required components:	

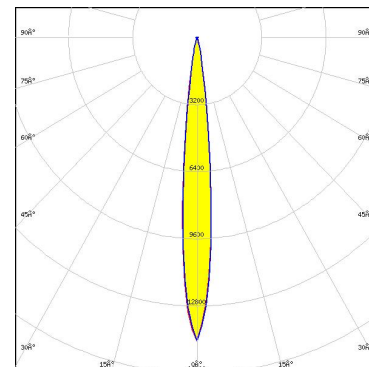


Light distribution files

OPTICAL RESULTS (SIMULATED):



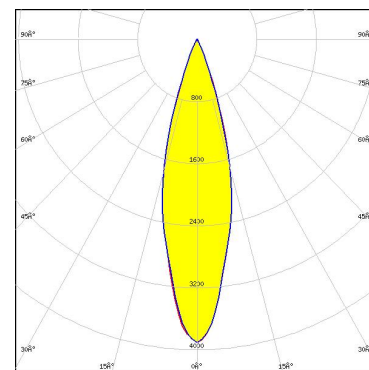
LED XB-D
FWHM / FWTM 11.0° / 22.0°
Efficiency 76 %
Peak intensity 14.5 cd/lm
LEDs/each optic 1
Light colour/type White
Required components:



Light distribution files



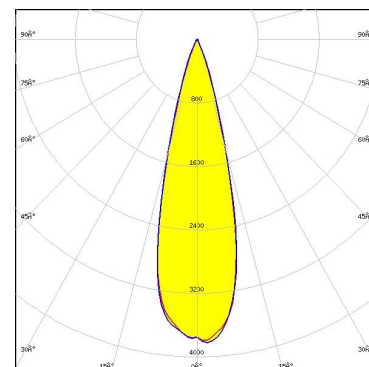
LED XHP35.2 HD
FWHM / FWTM 28.0° / 46.0°
Efficiency 90 %
Peak intensity 3.9 cd/lm
LEDs/each optic 1
Light colour/type White
Required components:



Light distribution files



LED XHP50
FWHM / FWTM 28.0° / 43.0°
Efficiency 89 %
Peak intensity 3.9 cd/lm
LEDs/each optic 1
Light colour/type White
Required components:

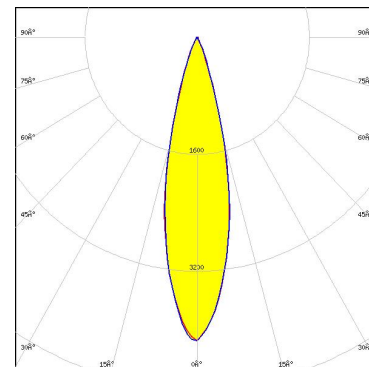


Light distribution files

OPTICAL RESULTS (SIMULATED):



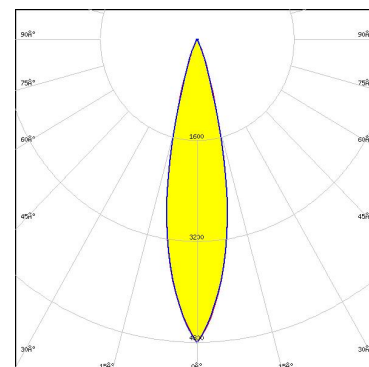
LED XHP50.2
FWHM / FWTM 25.0° / 43.0°
Efficiency 88 %
Peak intensity 4.2 cd/lm
LEDs/each optic 1
Light colour/type White
Required components:



Light distribution files



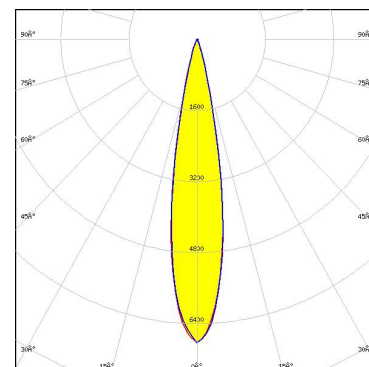
LED XHP50.3 HD
FWHM / FWTM 24.0° / 40.0°
Efficiency 88 %
Peak intensity 4.8 cd/lm
LEDs/each optic 1
Light colour/type White
Required components:



Light distribution files



LED XHP50.3 HI
FWHM / FWTM 20.0° / 34.0°
Efficiency 90 %
Peak intensity 6.8 cd/lm
LEDs/each optic 1
Light colour/type White
Required components:

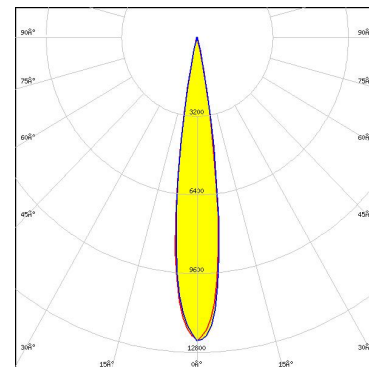


Light distribution files

OPTICAL RESULTS (SIMULATED):



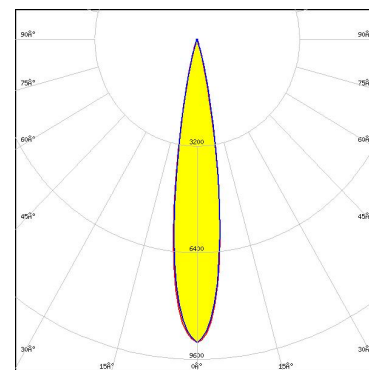
LED XP-G2
 FWHM / FWTM 16.0° / 24.0°
 Efficiency 92 %
 Peak intensity 12.4 cd/lm
 LEDs/each optic 1
 Light colour/type White
 Required components:



Light distribution files



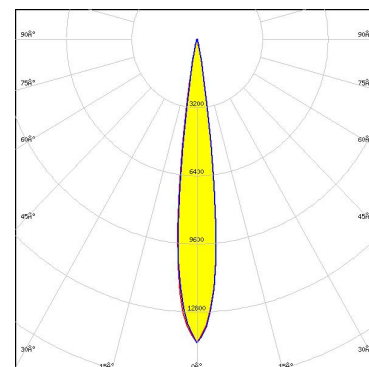
LED XP-G3
 FWHM / FWTM 18.0° / 29.0°
 Efficiency 89 %
 Peak intensity 9.1 cd/lm
 LEDs/each optic 1
 Light colour/type White
 Required components:



Light distribution files



LED XP-G4 HI
 FWHM / FWTM 14.0° / 22.0°
 Efficiency 90 %
 Peak intensity 14.2 cd/lm
 LEDs/each optic 1
 Light colour/type White
 Required components:

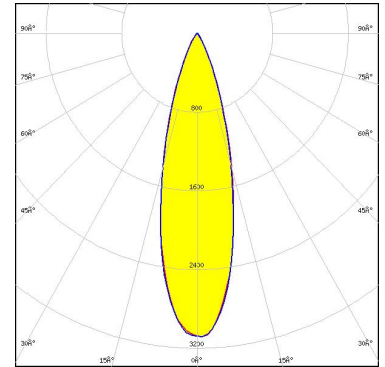


Light distribution files

OPTICAL RESULTS (SIMULATED):



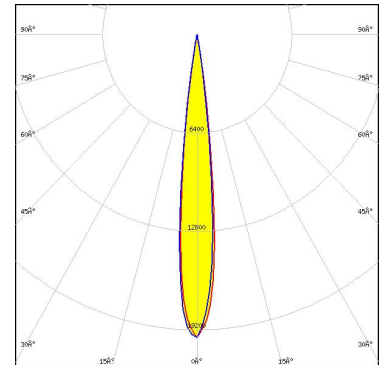
LED LUXEON 5050 Square LES
 FWHM / FWTM 28.0° / 53.0°
 Efficiency 92 %
 Peak intensity 3.1 cd/lm
 LEDs/each optic 1
 Light colour/type White
 Required components:



Light distribution files



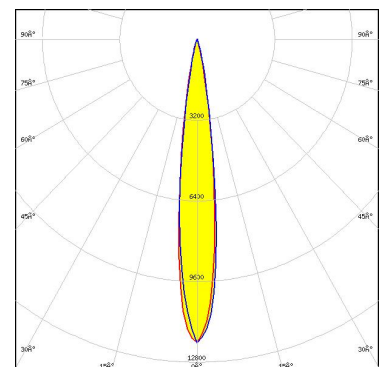
LED LUXEON CZ
 FWHM / FWTM 12.0° / 18.0°
 Efficiency 92 %
 Peak intensity 19.7 cd/lm
 LEDs/each optic 1
 Light colour/type Red
 Required components:



Light distribution files



LED Duris E5
 FWHM / FWTM 14.0° / 26.0°
 Efficiency 90 %
 Peak intensity 12 cd/lm
 LEDs/each optic 1
 Light colour/type White
 Required components:

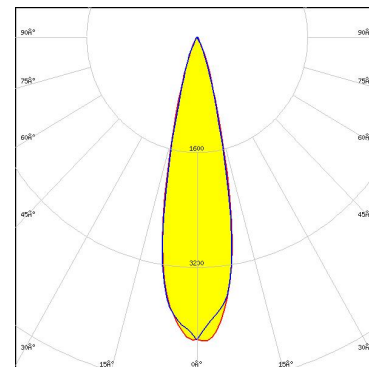


Light distribution files

OPTICAL RESULTS (SIMULATED):

OSRAM
Opto Semiconductors

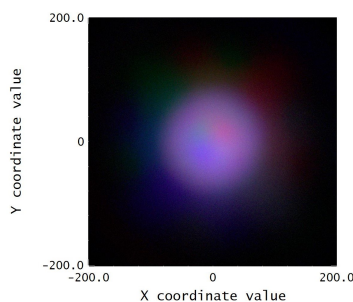
LED Duris S8
FWHM / FWTM 25.0° / 43.0°
Efficiency 90 %
Peak intensity 4.3 cd/lm
LEDs/each optic 1
Light colour/type White
Required components:



Light distribution files

OSRAM
Opto Semiconductors

LED OSTAR Stage (S2WM)
FWHM / FWTM 16.0° / 25.0°
Efficiency 93 %
Peak intensity 12.2 cd/lm
LEDs/each optic 1
Light colour/type White
Required components:



Light distribution files

GENERAL INFORMATION:

NOTE: The typical beam angle will be changed by different color, chip size and chip position tolerance. The typical total beam angle is the full angle measured where the luminous intensity is half of the peak value.

MATERIALS:

As part of our continuous research and improvement processes, and to ensure the best possible quality and availability of our products, LEDiL reserves the right to change material grades without notice.

PRODUCT DATA USER AGREEMENT AND DISCLAIMER:

The measured data in the provided downloadable LEDiL Product Datasheets and Mechanical 2D-Drawings is rounded and provided as reference for planning. LEDiL Oy's optical specifications have been verified by conducting performance testing of the products in accordance with the company's quality system. The reported data are averaged results of multiple measurements with typical variation. LEDiL Oy reserves the right to without prior notification make changes and improvements to its products.

LEDiL Oy assumes neither warranty, nor guarantee nor any other liability of any kind for the contents and correctness of the provided data. The provided data has been generated with highest diligence but the provided data may in reality not represent the complete possible variation range of all intrinsic parameters. Therefore, in certain cases a deviation from the provided data could occur.

LEDiL Oy reserves the right to undertake technical changes of its products without further notification which could lead to changes in the provided data. LEDiL Oy assumes no liability of any kind for the possible deviation from any provided data or any other damage resulting from the usage of the provided data.

The user agrees to this disclaimer and user agreement with the download or usage of the provided files.

LEDiL Oy

Joensuunkatu 13
FI-24240 SALO
Finland

LEDiL Inc.

228 West Page Street
Suite D
Sycamore IL 60178
USA

Ledil Optics Technology (Shenzhen) Co., Ltd.

405 , Block B
Casic Motor Building
Shenzhen 518057
P.R.CHINA

Local sales and technical support

[www.ledil.com/
where_to_buy](http://www.ledil.com/where_to_buy)

Shipping locations

Poznan, Poland
Hong Kong, China

Distribution Partners

[www.ledil.com/
where_to_buy](http://www.ledil.com/where_to_buy)

Mouser Electronics

Authorized Distributor

Click to View Pricing, Inventory, Delivery & Lifecycle Information:

[Ledil:](#)

[FA10613_LM1-RS](#)