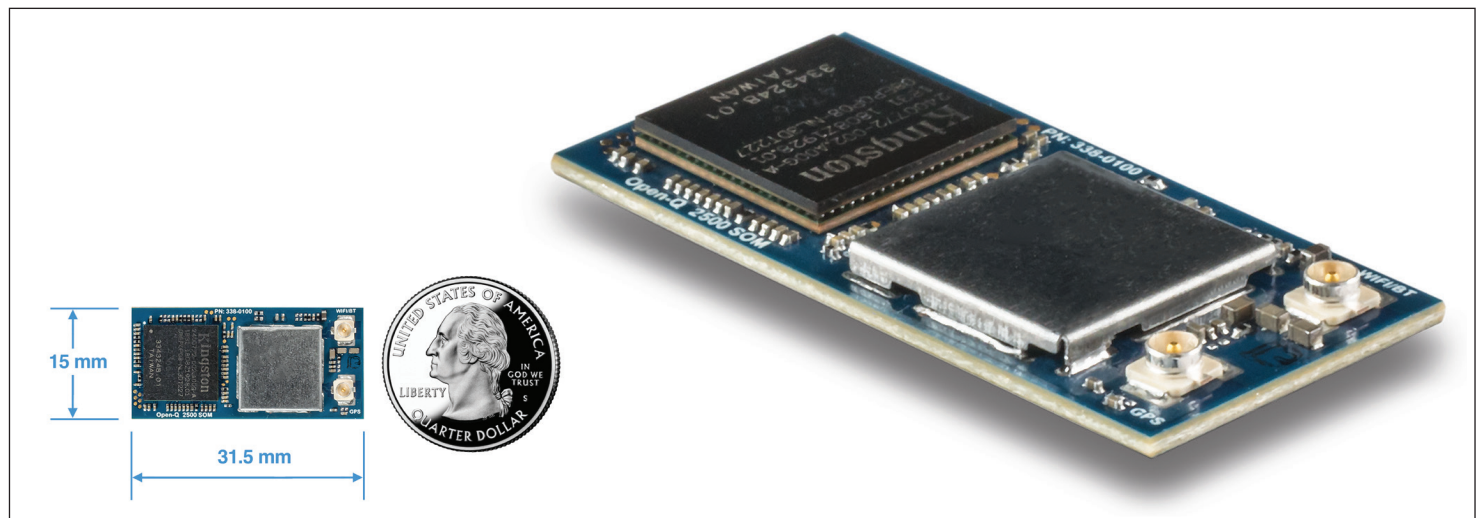


Open-Q™ 2500 SOM (System on Module)

Based on the Qualcomm® Snapdragon Wear™ SDW2500 platform



Lantronix's Open-Q™ 2500 SOM combines critical elements for wearable device innovation and performance: high performance, small size, low power, integrated sensor support, and seamless connectivity. The SOM is designed to meet the needs across a range of Android™ based wearable devices including pet, children, and elderly trackers, high-end fitness trackers, smartwatches, connected headsets, smart eyewear, and more. An integrated, ultra-low power sensor hub supports rich algorithms with superior accuracy, and to help extend battery life for wearables, the Snapdragon Wear™ 2500 platform incorporates a new wearable PMIC, which supports reduced power consumption both on standby and when active.

Key Features

- High Performance Quad-Core ARM Cortex A7
- DSP for low power sensor processing
- Qualcomm® Wi-Fi/BT 802.11b/g/n + BT 4.x
- Qualcomm® Gen 8C GNSS location system
- Camera 2-lane MIPI CSI up to 8MP
- Long battery life with new wearables specific PMIC
- USB Type-C to support Qualcomm® Quick Charge

Applications

- Connected wearables
- Pet, children, elderly trackers
- Fitness trackers
- Connected headsets
- Smart eyewear
- Ultra-compact embedded devices

Engineering Services:

We provide a full solution – our unparalleled engineering expertise and product development skills deliver innovative products that are cost-effective and can jumpstart your Go-to-Market timeline.

Our business model offers turnkey product development services, or we can augment your team in specific areas of development. The choice is yours.

Key development expertise in:

- Camera development and tuning
- Voice control
- Machine learning
- Mechanical & RF design
- Thermal & power optimization

IoT Product Development made easy

Qualcomm
snapdragon wear
2500 platform



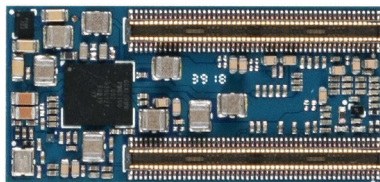
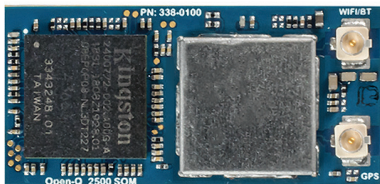
Lantronix Open-Q™ 2500 SOM

Hardware Specifications:

Open-Q™ 2500 SOM	
• Processor	Snapdragon Wear™ 2500 (APQ8009W) optimized for wearables Quad-Core ARM Cortex A7 (32-bit) at 1.094GHz Qualcomm® Adreno™ 304 GPU DSP for low power sensor core
• Memory/Storage	PoP memory: 1GB LPDDR3 RAM, 8GB eMMC Flash
• Wireless	Wi-Fi 802.11b/g/n (WCN3620) w/ U.FL ant. connector Bluetooth 4.x
• Location Services	Gen 8C GNSS (WGR7640) with U.FL connector
• Display Interface	4-lane MIPI DSI, up to 720p at 60fps optimized for wearables
• Camera Interface	2-lane MIPI CSI supports up to 8MP camera
• Audio Interfaces	2x I2S interfaces + DMIC input for digital audio peripherals
• Power/Battery Management	Power management and battery charging on SOM with Quickcharge capability via USB Type-C (PMW3100 power management chip)
• USB Interface	USB2 with Type-C interface for quick-charge capability
• General I/O	GPIO, BLSP, Sensor I/O, SDIO
• Sensor Support	Snapdragon sensor core DSP Interface
• Operating Environment	Input voltage: 3.6V to 4.2V Operating Temperature: -25°C to +85°C Tc (based on component case temperature specifications)
• Form Factor	Size: 31.5mm x 15mm with 2x 100 pin board to board connectors

Software:

• OS Support	Android™ 8 for Wearables *Note that all hardware features may not be supported by all SW versions — see latest SW release notes for details
---------------------	--



Purchasing Information:

• Open-Q™ 2500 SOM	PN: QC-DB-J10004
• Open-Q™ 2500 Dev Kit	PN: QC-DB-J10003

Alternate SOM configurations available by special order (minimum order quantities apply) - e.g. different memory size, etc. Contact sales to discuss your specific needs today.

Contact Information:

Americas

800.422.7055
americas_sales@lantronix.com
www.lantronix.com
NASDAQ: LTRX

Europe

+31 (0) 76.52.3.6.74 4
eu_sales@lantronix.com

Asia/Pacific/Japan

+852 3428.2338
asiapacific_sales@lantronix.com
China: +86.21.6237.8868
India: +91 994-551-2488
Indonesia: +91 994-551-2488
Japan: +81.8.50.1354.6201

Certifications



© 2021 Lantronix, Inc. All rights reserved. Lantronix is a registered trademark of Lantronix, Inc. in the U.S. and other countries. Open-Q is a trademark of Lantronix, Inc. Qualcomm APQ8009W, Qualcomm Adreno, and Qualcomm Snapdragon Wear are products of Qualcomm Technologies, Inc. and/or its subsidiaries. Qualcomm, Adreno, and Snapdragon Wear are trademarks of Qualcomm Incorporated, registered in the United States and other countries. All other trademarks are the property of their respective owners. Specifications subject to change without notice. Not all features listed may be supported in software. Open-Q 2500 SOM MPB-00107 Rev A

LANTRONIX®

Mouser Electronics

Authorized Distributor

Click to View Pricing, Inventory, Delivery & Lifecycle Information:

[Lantronix:](#)

[QC-DB-J10004](#)