

Lantronix EMG™ 8500

Edge Management Gateway



LIGHTS OUT MANAGEMENT FOR BRANCH OFFICES & REMOTE LOCATIONS

A SMALL FORM FACTOR
OUT-OF-BAND SOLUTION

The Lantronix® EMG™ 8500 - Edge Management Gateway is the perfect edge solution for branch offices, remote locations, retail stores or anywhere an offsite network device gateway is needed and space is limited.



Improve Business Continuity

The EMG™ 8500 Edge Management Gateway is fully integrated into our range of out-of-band scalable solutions. With its modular design, the EMG™ enables users to place the product where it is most effective, alongside critical infrastructure in data centers, branch offices and remote sites. This solution delivers remote troubleshooting, resilience, and remediation to improve uptime and efficiency of networks to keep businesses running smoothly.



Quick Recovery from Downtimes

An integrated automatic fail-over/fail-back mechanism allows users to connect to their network equipment even when the primary network connection is congested or unresponsive. The EMG can fail-over to a cellular 4G/LTE connection where all global carriers are supported with services such as Private APN, VPN access, public, and private IP addressing. Network Performance Monitoring with support of IPSLA simulation traffic can ensure continuous and reliable network communication and help mitigate Lights Out scenarios.



Cost-Effective Secure Connectivity - Anytime, Anywhere

The EMG provides easy and secure administration and management of IT equipment from anywhere, at any time. Users can access the EMG device ports via Telnet/SSH, or a web browser-based console client without any proprietary software. Any IT asset that provides console or serial port management services can be managed remotely and locally. The EMG includes firewall features to reject or block unauthorized connection attempts. The EMG also has NIST-certified AES encryption.



Easy Centralized Management - ConsoleFlow™

ConsoleFlow™ is Lantronix's on-premise and cloud-based management platform for all deployed Lantronix edge management gateways and connected IT equipment. It offers a single pane of glass for centralized management and automated monitoring with real-time notifications. Mobile access from any iOS or Android platform provides secure access to your IT equipment.

Benefits You Can Depend On

Lights Out Management (LOM)- is the ability for a system administrator to connect, monitor, manage and repair servers by remote control. Lantronix enables LOM in all of its Out-of-Band Solutions. The new EMG8500 offers remote access so onsite personnel are not needed while offering easy access to minimize system downtimes.

Field Replaceable Units (FRU's) - the industry's first modular designed console manager offering users the ability to reduce the time required to develop and deploy new services. RJ45 serial, USB serial, or Ethernet device ports can be added to existing and new infrastructure equipment. The optional 4-port Ethernet Field Replaceable Unit (FRU) is used to make a direct dedicated Ethernet connection between the SLC and managed devices, providing layer 2 switching functionality.



Front View



Modules

ConsoleFlow Software - helps to reduce downtime. See why our centralized management software won the Interop 2019 Special Prize with a free trial.

To sign up for a 30-day free trial, visit:
www.consoleflow.com

For more information, visit:
www.lantronix.com/consoleflow

Contact Us:
www.lantronix.com/about-us/contact/



LANTRONIX

Features and Specifications

Device Access

- In-Band: Two GbE (10/100/1000Mbps) ports on RJ45 or 2 SFP Fiber port
- Out-of-Band: 2 independent Ethernet uplink ports, internal POTS modem, external/internal cellular radio, Wi-Fi

Security and Authentication

- Enterprise-grade security
- Secure Sockets Layer (TLS v1, v1.1, v1.2, v1.3)
- Packet filtering (firewall)
- Per port user permissions
- Configurable user/group rights
- Remote authentication: LDAP/AD, RADIUS, Kerberos, TACACS+, NIS
- Local username/password
- NIST-certified implementation of AES (Advanced Encryption Standards) as specified by FIPS-197
- FIPS 140-2 compliant cryptography (Certificate #2398)

Serial Device Port Access

- Software programmable reversible pinouts on device ports
- Telnet/SSH to EMG command line interface
- Telnet/SSH/RAW-TCP direct to an IP address
- HTML5 support for Java-free web terminal SSH access to console ports
- Multiple Telnet/SSH sessions
- Simultaneous user access to the same console port
- Customizable multi-level user menus
- RJ45 and/or USB device ports
- Automatic port-initiated connections to a network host or outbound SSH connections to neighboring equipment
- Enable CLI terminal logins from any device port
- SD card and USB

Data Capture and Notification

- Port buffering—256 KB per port
- Port logging to local files, syslog, USB thumb drive, SD card, and NFS share
- System, audit and port logging
- Event notification via email, SNMP or Syslog entry
- Character string recognition

Management

- Quick setup and configuration web interface (TLS)
- CLI setup script
- CLI (Telnet, SSH, WebTerminal or direct console port access)
- SNMP (MIB II) —v1, v2, v3, v3 over TLS, custom MIBs
- RPM (remote power management) feature to control and monitor industry leading PDU & UPS devices
- Active user list display, port monitoring and timeout
- Diagnostics and port status counters
 - Performance monitoring utility
 - Packet generation utility
 - Network trace utility
- Digital I/O inputs and special integration with Sensorsoft environmental sensors
- Local subnet search for other Lantronix console manager solutions
- Maximum 15 users per device port

Additional Protocols Supported

- DHCP and BOOTP for dynamic IP address assignment
- NTP for time synchronization
- FTP, TFTP, SFTP, SCP client for file transfers
- DNS IP address name resolution
- SSH, TLS, SSL, Telnet and TCP port connections in/out of every device port, UDP, PPP with PAP/CHAP, NFS and CIFS for data storage
- StrongSwan IPsec VPN client
- RIP and RIPv2
- IPv6 Addressing supported

Interfaces

- Front Panel: USB Host port, microSD/SDHC slot, RS-232 console
- Front Panel: Two (2) customer replaceable IO module slots for 4 port RS-232 (RJ45) 300 to 921600 bps, 4 port USB or 4 port Ethernet Switch
- Back Panel: Dual Gb Ethernet or Dual Gb fiber SFP ports
- Back Panel: Two (2) customer replaceable connectivity module slots for LTE/4G cellular, Wi-Fi, or dial up modem out-of-band options

Environmental Sensors Support

- Plug and go connectivity support for sensors and accessories used to measure/ detect temperature, humidity, power availability and dry-contact closures

Memory

- 1 GB Internal NAND Flash
- 1 GB Internal DRAM
- Internal Storage: 128GB Flash (optional)
- External Storage: microSD slot for up to 128 GB Flash

Power

- Power inlet: External power, 9-30 VDC

Central Management

- Compatible with the Lantronix ConsoleFlow™ central management software

Environmental

- Temperature:
 - Operating: 0 to 50° C (32 to 122° F), 30 to 90%RH, non-condensing
 - Storage: -20 to 80° C (-4 to 176° F), 10 to 90% relative humidity, non-condensing
- Heat flow rate: TBD BTU per hour

Physical

- Front-mid-rear mounting brackets
- Dimensions (L x W x H): 212.6 x 167.68 x 43.21mm (8.37x 6.60 x 1.70 in), 1U
- Weight: 3.0 lbs. (1.36 kg) maximum, depending on options

Warranty

- 3 year limited warranty (extended warranty and support options available)

Certifications

- Compliance: CB; EU; FCC; IC; RCM; UKCA; UL RoHS
- * For addition regional certifications , ask your regional Lantronix sales associate for details.

How to Order:



1. Pick an I/O configuration



4-Port RS-232



4-Port ESB



4-Port Ethernet

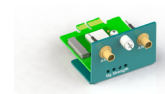
Any combination of up to two Field Replaceable Units (FRUs)



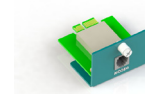
2. Pick a connectivity module (optional)



LTE/4G



Wi-Fi



Dial-Up Modem



3. Protect your investment with various extended warranty and service options

Contact Information

Americas

sales@lantronix.com
www.lantronix.com
NASDAQ: LTRX

Asia-Pacific

asiapacific_sales@lantronix.com

Europe

EMEA@lantronix.com



Mouser Electronics

Authorized Distributor

Click to View Pricing, Inventory, Delivery & Lifecycle Information:

[Lantronix:](#)

[EMG853010S](#) [EMG853020S](#)