



EDS3000PS

Device Server: Serial to Ethernet



REMOTELY CONNECT AND MANAGE YOUR SERIAL DEVICES

The EDS3000PS is a compact office grade plastic enclosed hybrid Ethernet terminal/multi serial port device servers (8-16) for easy remote access and management of virtually any IT/networking equipment or edge devices like medical equipment, POS terminals, or security equipment.

Comprehensive Device Security Framework

EDS3000PS device server delivers an unprecedented level of intelligence and safety with SSL/TLS, AES, and SSH built-in. EDS provides enterprise-level security, allowing safe remote access and management from practically anywhere.

Lantronix core software carries 30 years of 'data-center grade' protection, so each networked device has the same level of security as corporate data center equipment and provides robust defenses to hostile Internet attacks.

Easy Configuration

Setup is a breeze with Windows-based Lantronix Provisioning Manager, which can be used locally or remotely with the Lantronix ConsoleFlow™ device management platform. A "Cisco-like" command-line interface (CLI) simplifies configuration and control, making it easier to integrate edge devices or data center equipment into the network. EDS3000PS leverages the Lantronix Com Port Redirector virtualization software, allowing existing applications to work with the EDS with no code modifications.

Centralized Device Management Platform

Monitor, manage, and control your devices from anywhere, at any time with the ready-to-use software platform web application. The easy-to-use platform provides software-defined automation with zero-touch provisioning across all of your devices and the capture of device telemetry data for event management and analytics.

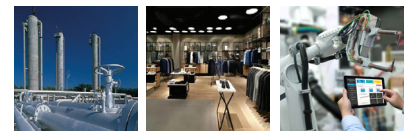
Perfect For:



Energy

Cities

Medical



Industrial

Retail

Robotics

EDS3000PS Highlights

- Quickly connect any device with a serial port to the network using robust SSH or SSL enterprise-level security
- Easily customize and enhance the EDS for your unique application
- Simple device setup, configuration and monitoring with powerful, industry-standard management tools, including Windows-based Lantronix Provisioning Manager and cloud-based ConsoleFlow
- Sleek design, desktop or wall-mount, perfect for medical or other high visibility installations

LANTRONIX



Features and Specifications

Hardware

- CPU: Cortex A9
- 4 Gbit (512 MB) Flash
- 4 Gbit (512 MB) RAM
- On-board memory: 8MB Flash
- Ethernet 10/100/1000Mbps

Serial Interface

- Software selectable data rates from 300 to 230K Baud
- Characters: 7 or 8 data bits
- Parity: Odd, Even, None
- Stop Bits: 1 or 2
- Modem Control Signals: CTS, RTS, DTR, DCD
- Flow Control: XON/XOFF (software), CTS/RTS (hardware), None

Network Interface

- 10/100/1000Mbps Ethernet
- 8 or 16 ports, RJ45 software selectable serial ports
- Protocols: HTTP, HTTPS, FTP, TFTP, Telnet, TCP, UDP, DHCP, SSHv2, SSLv3, SNMP v2, Auto IP, RSS, ARP, ICMP, SYSLOG, AES, SMTP, DNS, SNTP

Security

- SSL 3, TLS 1.0, TLS 1.1, TLS 1.2, TLS 1.3s
- MD5,SHA-1,SHA-2
- RSA, DSA and ECDSA
- Password protection
- IP address filtering

Software

- Lantronix Provisioning Manager
- Secure ComPort Redirector
- ComPort Redirector™

Management

- Internal web server, SNMP v1, SNMP v2, SNMP v3, Serial Login,
- Telnet SSH login, XML
- ConsoleFlow
- Upgradeable FW via the Web Manager, FTP or serial port

Internal Web Server

- Customizable with CGI
- Web content on local file system and updatable through ftp

Environmental

- Operating: 0° to 55° C (32° to 131° F)
- Storage: -40° to 70° C (-40° to 151° F)
- Relative Humidity: 5 to 95%, non-condensing

Power

- 100-240VAC, 50 to 60 Hz IEC-type cord
- 20 Watts

Regulatory Approvals

- FCC, IC, CE, UL/CB

Dimensions

EDS3008PS

- Size: 12.8cm (5.02 in) L x 22.7 cm (8.92 in) W x 4.3 cm (1.7 in) H
- Weight: 0. 499 kg (1.1 lb)

EDS30016PS

- Size: 12.8cm (5.02 in) L x 22.7 cm (8.92 in) W x 6 cm (2.36 in) H
- Weight: 0. 616 kg (1.36 lb)

Warranty

- 3 year limited

Ordering Information

Part Number	Description
EDS3008PS1NS	EDS 300PS secure device server, 8-port serial, 1GbE Ethernet, 100-240 VAC, Desktop, Normal power cord included
EDS3016PS1NS	EDS 300PS secure serial device server, 16-port serial, 1GbE Ethernet, 100-240 VAC Desktop, Normal power cord

Accessories Number	Description
200.2066A	RJ45 to DB25M cable adapter (DTE Device)
200.2067A	RJ45 to DB25F cable adapter (DTE Device)
200.2069A	RJ45 to DB9M cable adapter (DTE Device)
200.2070A	RJ45 to DB9F cable adapter (DTE Device)
200.2071	RJ45 to DB9M cable adapter (DCE Device)
200.2072	RJ45 to DB9F cable adapter (DCE Device)
200.2073	RJ45 to DB25M cable adapter (DCE Device)
200.2074	RJ45 to DB25F cable adapter (DCE Device)
500-153	Cable; RJ45 Loopback Adapter
ADP010104-01	Cable; rolled serial adapter, 0.1m (0.33 ft)
200.0062	Cable; RJ45, 2 m (6.6 ft)
200.0063	Cable; RJ45, 5 m (16.4 ft)
200.0064	Cable; RJ45, 10 m (32.8 ft)
Cable; RJ45, 10 m (32.8 ft)	10 m (32.8 ft)5 Cable; RJ45, 15 m (49.2 ft)

Contact Information

Americas

800.422.7055
americas_sales@lantronix.com
www.lantronix.com
NASDAQ: LTRX

Europe

+31 (0) 76.52.3.6.74 4
eu_sales@lantronix.com

Asia/Pacific/Japan

+852 3428.2338
asiapacific_sales@lantronix.com

China: +86.21.6237.8868

India: +91 994-551-2488

Indonesia: +91 994-551-2488

Japan: +81.8.50.1354.6201

Mouser Electronics

Authorized Distributor

Click to View Pricing, Inventory, Delivery & Lifecycle Information:

[Lantronix:](#)

[EDS3016PS1NS](#) [EDS3008PS1NS](#)