



DC POWER CONNECTORS: KLDPX Series
Panel Mount DC Power Jack

Product Features

- 2.0mm and 2.5mm
- Panel Mount
- Solder Eyelets
- Built in DC On/Off Switch
- Portable Electronic Devices
- CSA/NRTL Certified No. LR78160
- UL File No. E140125

Performance Specifications

Materials and Finish

- Center Pin & Threaded Barrel:** Brass, Nickel Plated
- Contact #1, #3:** Brass, Silver Plated
- Contact #2:** Phosphor Bronze, Silver Plated
- Washer:** SPCC, Nickel Plated

Electrical Characteristics

- Rated Current:** 5A
- Rated Voltage:** 24V DC
- Contact Resistance:** 30 milliohms Max.
- Insulation Resistance:** 50 Megohms Min. at 100 or 200V DC for 1 Minute
- Dielectric Withstanding Voltage:** 250V AC Min. for 1 Minute

Mechanical Characteristics

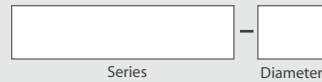
- Durability Test:** 5000 Cycles
- Insertion Force:** 3.0kg Max.
- Extraction Force:** 0.3kg Min.

2D Drawing	IGES	STEP	3D PDF
Solder Profile	CofC RoHS Compliant	CofC REACH Compliant	UL Plastic File
Certificate of Origin	Check Stock	Request a Sample	Send Us An Email

Generated Part Number



Part Number Builder



Series

KLDPX-0302 - Panel Mount DC Power Jack

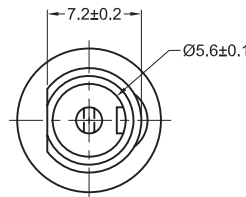
Diameter

- A - 2.0mm Center Pin Diameter
- B - 2.5mm Center Pin Diameter

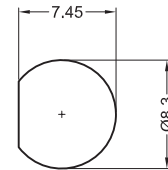
Contact Kycon For Other Options

KLDPX Series

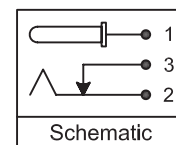
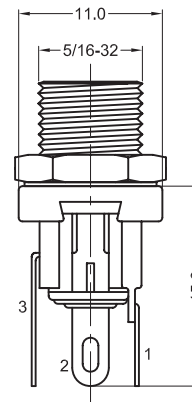
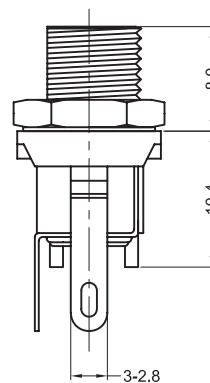
Dimensions in mm



(NOTE: NUT AND WASHER NOT SHOWN THIS VIEW)



Recommended Panel Cutout



Mouser Electronics

Authorized Distributor

Click to View Pricing, Inventory, Delivery & Lifecycle Information:

[Kycon:](#)

[KLDPX-0302-A](#) [KLDPX-0302-B](#) [KLDPX-0302-A-P](#) [KLDPX-0302-B-P](#)