



SB[®] Smart Connector

Up to 230 Amps



Battery



Vehicle Device



Charger

The SB[®] Smart is designed for applications where storage batteries intelligently interact with the system. Two primary power positions (up to 230 amps each) are combined with sixteen auxiliary power / signal positions (up to 15 amps each) into a single interconnect solution. This allows one connection to be used to route high power lines, low power lines, and signal circuits.

Unique to the SB[®] Smart is its selective keyed housings that allow only mating between select connector halves. This prevents motors from mating with chargers, chargers from mating with chargers, or other undesirable connection scenarios.

- **Selective Keyed Housings**

Unique keying feature only allows intended connector halves to mate

- **Power and Auxiliary Contacts**

Provides power up to 230 amps plus signal & low power in a single connector

- **16 Last-Mate First-Break Auxiliary Power / Signal Poles**

Enables the power connector to also transmit signals for intelligent power switching, battery monitoring, CAN communication, loop circuitry, and other signal or power circuits up to 15 amps

- **Sequencing of Auxiliary Contacts**

Male auxiliary contacts available in 3 lengths

- **Wire and Busbar Connections**

Satisfies multiple interconnect needs with one connection solution

- **Low Resistance Connection**

- Silver plated power contacts are strongly forced together by stainless steel springs
- Gold plated auxiliary contacts ensure signal quality or reliable power

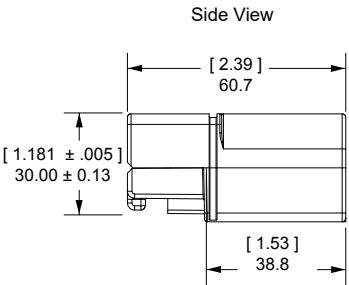
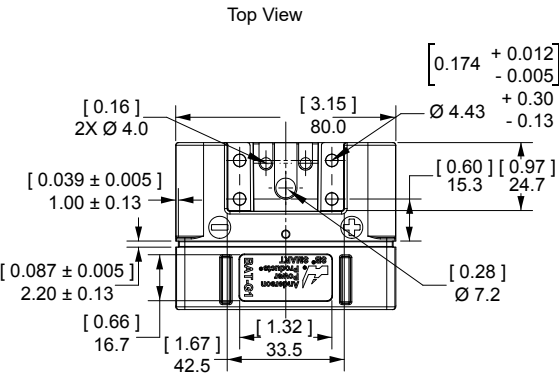
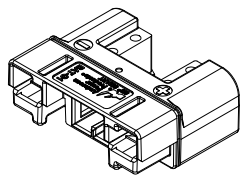
- **Hot Plug Capable Contacts**

- Power contacts are hot plug capable up to 60A at 120VDC
- Auxiliary contacts are hot plug capable up to 5A at 120VDC

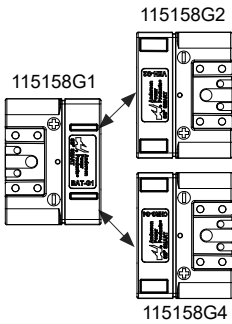
ORDERING INFORMATION

SB® Smart Housings (Auxiliary Module Sold Separately)

Color	Housing Type / Marking	Mates With	Part Numbers
Minimum Quantity			100
Black	Battery BAT-G1	VEH-G2 & CHRG-G4	115158G1
Black	Vehicle / Device VEH-G2	BAT-G1	115158G2
Black	Charger CHRG-G4	BAT-G1	115158G4



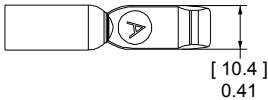
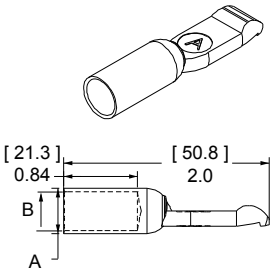
Mated Pairings Illustrations



SB® Smart Silver Plated Wire Contacts

Silver plated contacts offer superior electrical performance and durability up to 10,000 mating cycles. New contacts for 1 to 1/0 AWG (35 to 50 mm²) offer extended capability in the same housings.

		Mating				- A -		- B -	
AWG	mm²	Force	Loose Piece Part Numbers			inches	mm	inches	mm
Minimum Quantity			600	500	50				
1/0	53.5	Low	1323G2-BK	-	1323G2	0.52	13.21	0.44	11.18
1	42.4	Low	1323G1-BK	-	1323G1	0.47	11.94	0.39	9.91
2	33.6	High	-	1319-BK	1319	0.44	11.18	0.34	8.64
4	21.1	High	-	1319G4-BK	1319G4	0.44	11.18	0.29	7.37
6	13.3	High	-	1319G6-BK	1319G6	0.44	11.18	0.22	5.59

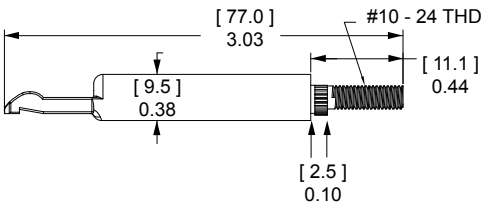


SB® Smart Silver Plated Busbar Contacts

Use 2 busbar contacts per housing to provide a quick disconnect input or output busbar connection. Busbar contacts are for mating with wire contacts only. Part number 120BBS includes lock nuts. Locknuts must be ordered separately for B01997P1.

Type	Thread	Mating Force	Loose Piece Part Numbers			
Minimum Quantity			1,000	300	20	10
Busbar	10 to 24	High	-	B01997P1	-	120BBS
Lock Nut	10 to 24	-	H1216P8	-	-	-

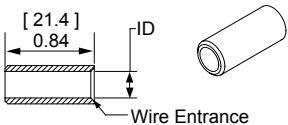
See Busbar contact drawing on website for further detail.



Reducing Bushings

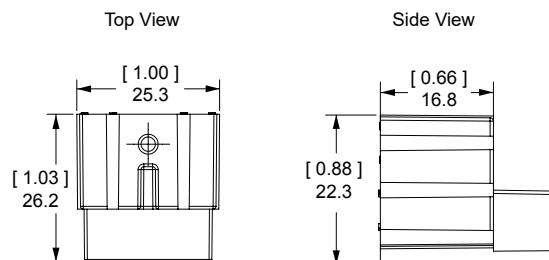
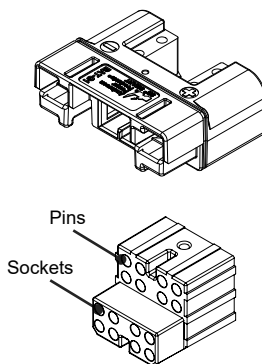
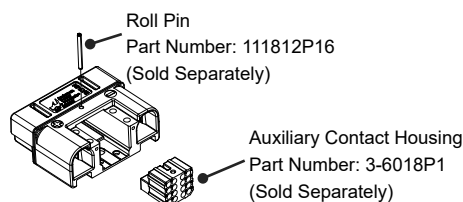
Use with contact part number 1319-BK or 6811G6-BK to allow a smaller wire to be used with the connector. Electrical capability is derated with smaller wire.

Contact Barrel Size		Wire Size		Part Numbers			Dimensions - ID -	
AWG	mm²	AWG	mm²				inches	mm
Minimum Quantity				2,000	1,000	100		
2	33.6	4	21.2	5919-BK	-	5919	0.28	7.11
2	33.6	6	16	-	5920-BK	5920	0.23	5.84
2	33.6	10 to 8	5.3 to 8.4	5921-BK	-	5921	0.18	4.57



SB® Smart Auxiliary Module

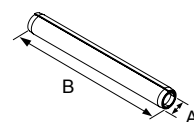
Color	Number of Positions	Part Number
Minimum Quantity		100
Black	8 Pins + 8 Sockets	3-6018P1



Retaining Pins

Retaining pins are used to hold the auxiliary module in the SB® Smart housings.
Dimension "B" is +/- 0.01 in or 0.25 mm.

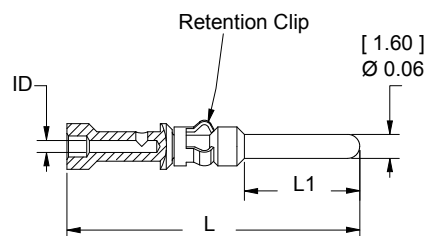
Description	Part Number	Dimensions			
		- A - inches		- B - mm	
Minimum Quantity For SB® Smart Auxiliary Module	111812P16	0.099 / 0.106	2.51 / 2.69	1.125	28.58



Pin Contacts for 1x4 Auxiliary Connector

Gold plated contacts are available in 3 lengths to allow sequencing of circuits.

Description	AWG	mm²	Part Numbers	
Minimum Quantity			500	50
Standard Length 7.7 mm	12	2.5	PM16P12S30	PM16P12S30-50
	16 to 14	1.0 to 1.5	PM16P1416S30	PM16P1416S30-50
	20 to 16	0.75 to 1.0	PM16P1620S30	PM16P1620S30-50
	24 to 20	0.50 to 0.75	PM16P2024S30	PM16P2024S30-50
Pre-Mate 9.3 mm	12	2.5	PM16P12A30	PM16P12A30-50
	16 to 14	1.0 to 1.5	PM16P1416A30	PM16P1416A30-50
	20 to 16	0.75 to 1.0	PM16P1620A30	PM16P1620A30-50
	24 to 20	0.50 to 0.75	PM16P2024A30	PM16P2024A30-50
Post-Mate 6.4 mm	12	2.5	PM16P12C30	PM16P12C30-50
	16 to 14	1.0 to 1.5	PM16P1416C30	PM16P1416C30-50
	20 to 16	0.75 to 1.0	PM16P1620C30	PM16P1620C30-50
	24 to 20	0.50 to 0.75	PM16P2024C30	PM16P2024C30-50

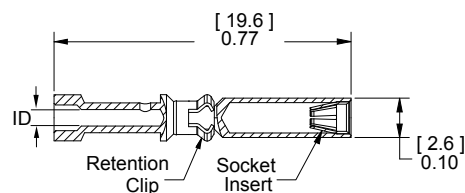


Auxiliary Pin	- L -		- L1 -	
Contact Lengths	in.	mm	in.	mm
Standard Length 7.7 mm	0.77	19.6	0.30	7.7
Pre-Mate 9.3 mm	0.83	21.2	0.37	9.3
Post-Mate 6.6 mm	0.72	18.3	0.25	6.4

Socket Contacts for 1x4 Auxiliary Connector

Selectively gold plated contacts offer low resistance and durability up to 10,000 mating cycles.

Description	AWG	mm²	Part Numbers	
Minimum Quantity			500	50
Socket Contact	12	2.5	PM16S12S32	PM16S12S32-50
	16 to 14	1.0 to 1.5	PM16S1416S32	PM16S1416S32-50
	20 to 16	0.75 to 1.0	PM16S1620S32	PM16S1620S32-50
	24 to 20	0.50 to 0.75	PM16S2024S32	PM16S2024S32-50

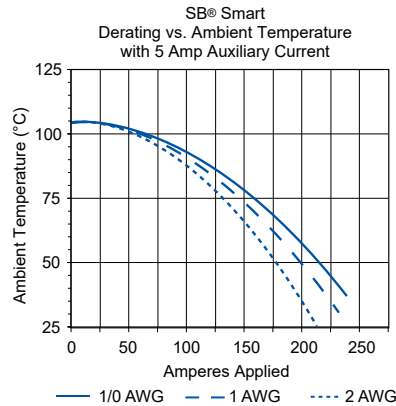
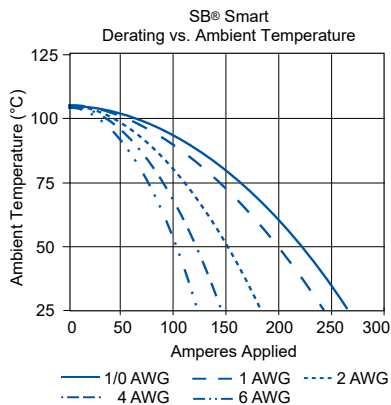
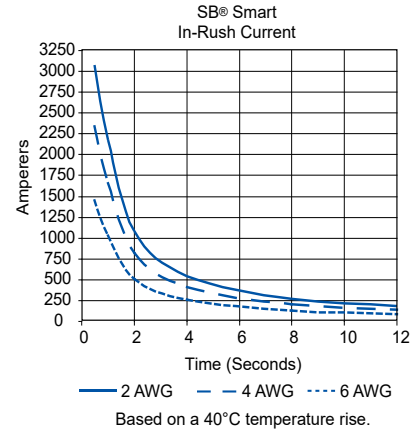
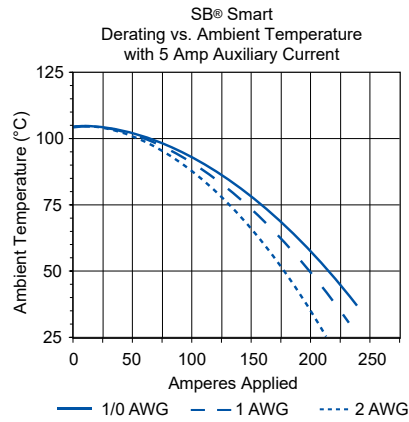
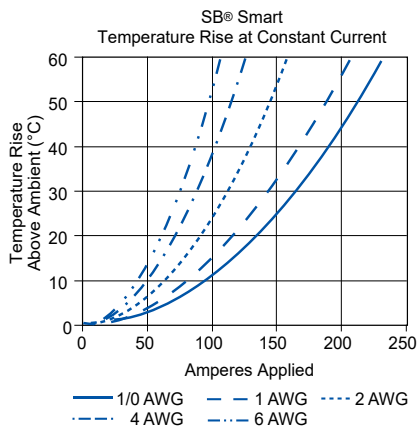


Auxiliary Socket Contacts Crimp Barrel ID

Wire Gauge	in.	mm.
24 / 20	0.04	1.1
20 / 16	0.07	1.7
16 / 14	0.08	2.1
12	0.10	2.6

SB® SMART TEMPERATURE CHARTS - Temperature rise charts are based on a 25°C ambient temperature.

Current - Temperature Derating per IEC 60512-5-2 Test 5B



SPECIFICATIONS

ELECTRICAL

Current Rating (Amperes)¹

Primary Contacts	230
Auxiliary Contacts	15

Operating Temperature²

	°C	°F
PC Housing	-20° to 105°	-4° to 221°

Voltage Rating (AC/DC)

600

Dielectric Withstanding Voltage (AC)

2,200

MATERIALS

Standard Housing	PC
Flammability Rating	UL94 V-0
Wire Power Contact	Copper Alloy, Silver Plate
PCB Power Contact	Copper Alloy, Tin Plate
Auxiliary Pin	Copper Alloy, Au over Ni
Auxiliary Socket	BeCu, Au over Ni
Auxiliary Socket Body	Copper Alloy, Sn Bright over Ni

MECHANICAL

Primary Power

Auxiliary Power

Contact Wire Range	(AWG)	10 to 1/0	24 to 12
	(mm ²)	5.3 to 53.5	0.25 to 3.3
MAX Wire Insulation Diameter	(in)	0.65	0.12
	(mm)	16.25	3.2
AVG Contact Resistance (milli-ohms) ³		0.136	3.00
AVG Contact Retention Force	(lbf)	60	18
	(N)	267	80
Mating Cycles (no load)		10,000	10,000
Mating Cycles (hot plug @ 120V)		250 @ 50A	250 @ 5A
Connector AVG Connect / Disconnect	(lbf)	82	
	(N)	365	

1 - Based on: 105°C rated or better cable of the largest size. Properly calibrated Anderson Power™ recommended tooling, and a 25°C ambient temperature.

2 - Limited by the thermal properties of the connector plastic housing.

3 - Use Anderson Power™ recommended tooling only. Alternate tools may adversely affect the performance of our connectors.

TOOLING INFORMATION

Wire Size		Loose Piece Part Number		Loose Piece Contact Crimp Tools										
AWG	mm ²	Tin Plating	Silver Plating	Hand Tool or	OR	Pneumatic Bench Tool	+	Die	+	Locator	Number of Crimps			
SMART Connector														
1/0	53.5	N/A	1323G2	1368		1387G1		1388G3		1389G4	Single			
1	42.4		1323G1					1388G4						
2	33.6		1319											
4	21.2		1319G4											
6	13.3		1319G6											

NOTE: See website for the most current information.

Wire Size		Loose Piece Part Number			Loose Piece Contact Crimp Tools					
AWG	mm²	Auxiliary Contact Part Number	Anderson Power™ Hand Tool with Integral Locator	OR	Mil Std. Hand Tool * M22520/1-01	OR	Pneumatic Tool*	Number of Crimps	+	Locator for: TM0001 & TP0001
SMART Connector										
12 to 24	3.36 to 0.20	All Crimp Pins	PM1000G1		TM0001		TP0001	Single		TL0001
		All Crimp Sockets								TL0002

Insertion / Extraction Tools											
PM1002G1 - 1 x 4 Auxiliary Contact Insertion Tool - For use with PM contacts and 1x4 auxiliary housing (444G1 housings and 441G kits)											
PM1003G1 - 1 x 4 Auxiliary Contact Insertion Tool - For use with PM contacts and 1x4 auxiliary housing (444G1 housings and 441G kits)											
PM1003GX - 1x4 Auxiliary contacts Inspection Tool - For use with PM contacts and 1x4 auxiliary housing (444G1 housings and 441G kits)											
969P1 - SBE® 160 / SBX® 175 Power Contact Extraction Tool											
970P1 - SBE® 320 / SBX® 350 Power Contact Extraction Tool											

* TP0001 and TM0001 tools require locators TL0001 for Pins and TL0002 for Sockets.
NOTE: See website for the most current information.

			Automated Tooling	
Contact Part Number	Description	Hand Tool	Press	Applicator
2003G1	Receptacle Contact, Reeled	-	115V = TE0101 230V = TE0102	TD0104
2003G1-LPBK	Receptacle Contact, Loose Piece	1309G9	-	-
2003G2-LPBK	Receptacle Contact, Loose Piece, 10AWG	1309G10	-	-

All Data Subject to Change Without Notice 2024-0103 DS-SMART REV 8 **Your Best Connection™**

Anderson™ will use reasonable efforts to include accurate and up-to-date content in the data sheet. All product information contained in the data sheet including ordering information, illustrations, specifications, and dimensions, are believed to be reliable as of the date of publishing, but is subject to change without notice. Anderson™ makes no warranty or representation as to its accuracy. Content in the data sheet may contain technical inaccuracies, typographical errors and may be changed or updated without notice. Anderson™ may also make improvements and/or changes to the products and/or to the programs described in the content at any time without notice. Current sales drawings and specifications are available upon request.

©2024 Anderson Power Products, Inc. All rights reserved. A®, Anderson Power Products®, and SB®, are registered trademarks of Anderson Power Products, Inc. Anderson™, Anderson Power™, Anderson Power™ logo and Your Best Connection™ are trademarks of Anderson Power Products, Inc.



HEADQUARTERS: Anderson Power Products®, 13 Pratts Junction Road, Sterling, MA 01564-2305 USA T: +1 978-422-3800 F: +1 978-422-0128 • **EUROPE:** Anderson Power Products® Ltd., Unit 3, Europa Court, Europa Boulevard, Westbrook, Warrington, Cheshire, WA5 7TN United Kingdom T: +44 (0) 1925 428390 F: +44 (0) 1925 520203 • **GERMANY:** IDEAL® Industries Germany GmbH, Esslinger Strasse 7, D – 70771 Leinfelden-Echterdingen, T: +49 (0) 711 – 997606666 • **ASIA / PACIFIC:** IDEAL® Anderson Asia Pacific Ltd., Unit 922-928 Topsail Plaza, 11 On Sum Street, Shatin N.T., Hong Kong T: +(852) 2636 0836 F: +(852) 2635 9036 • **INDIA:** IDEAL® INDUSTRIES India Private Limited, 229-230, SPAZEDGE, Tower B, Sector 47, Sohna Road, Gurgaon – 122018, Haryana, India T: +(91) 956-0075905 T: +(91) 124-4495101 • **CHINA:** IDEAL® Anderson Technologies (Shenzhen) Ltd., Block A8 Tantou Western Industrial Park, Songgang Baoan District, Shenzhen, PR. China 518105 T: +(86) 755 2768 2118 F: +(86) 755 2768 2218 • www.ideal-industries.in • www.andersonpower.com

Mouser Electronics

Authorized Distributor

Click to View Pricing, Inventory, Delivery & Lifecycle Information:

[Anderson Power Products:](#)

[115158G2](#) [115158G1](#) [115158G4](#)