

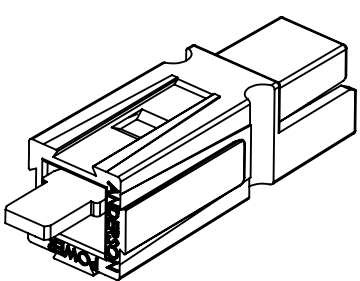
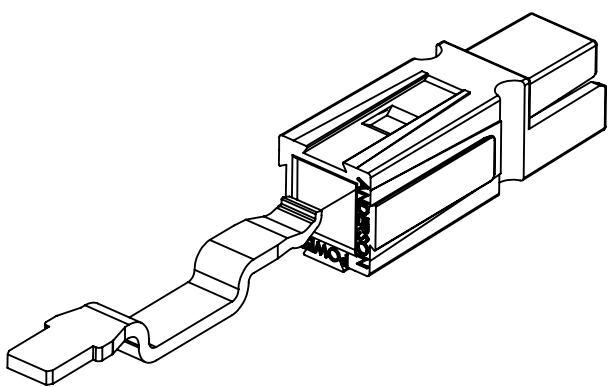
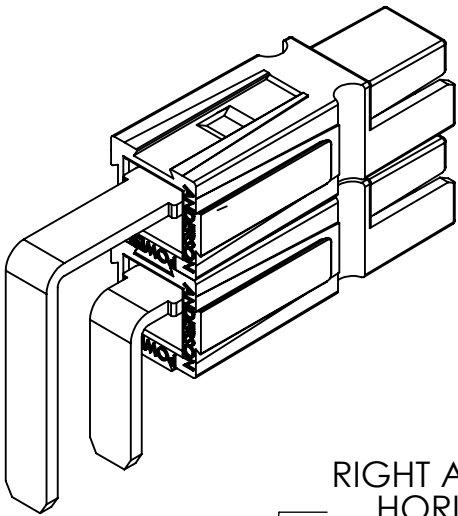
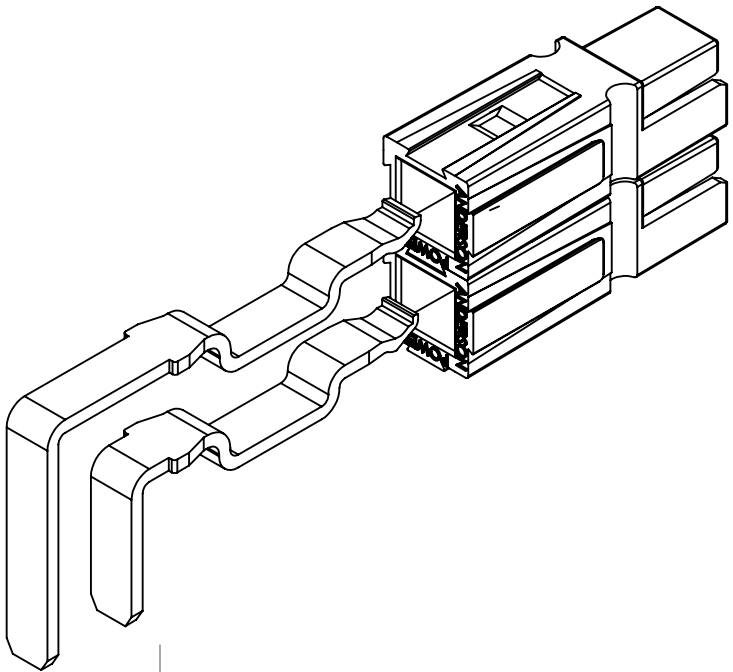
THE INFORMATION CONTAINED IN THIS DRAWING IS THE SOLE PROPERTY OF ANDERSON POWER PRODUCTS. ANY REPRODUCTION IN PART OR WHOLE WITHOUT THE WRITTEN PERMISSION OF ANDERSON POWER PRODUCTS IS PROHIBITED.

Copyright 2006

ANDERSON POWER PRODUCTS RESERVES THE RIGHT TO ALTER PRODUCT TYPES, THEIR TECHNICAL DATA, DIMENSION, STYLE AND ACCESSORIES WITHOUT PRIOR NOTIFICATION.

RIGHT ANGLE CONTACT

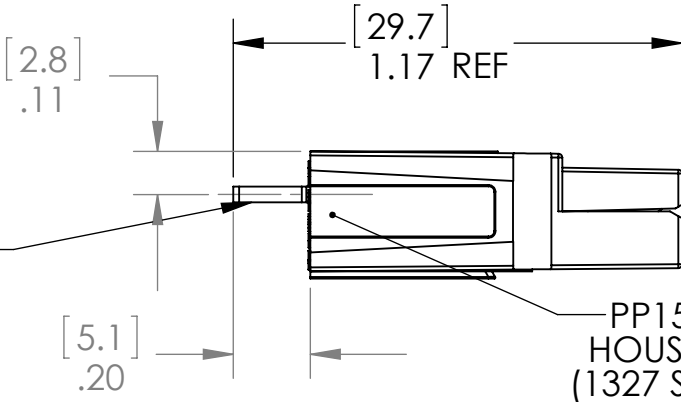
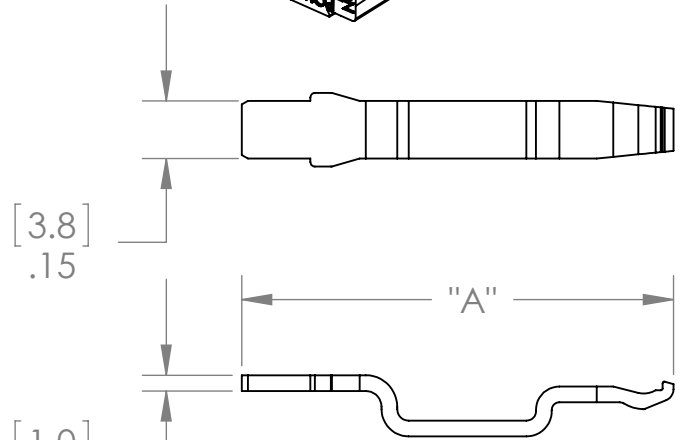
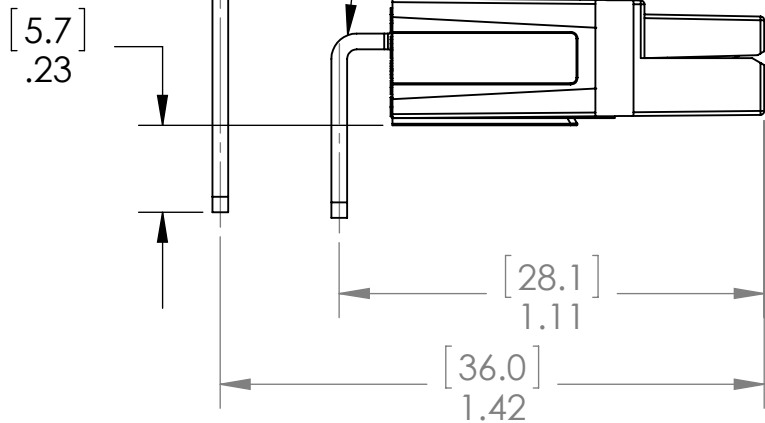
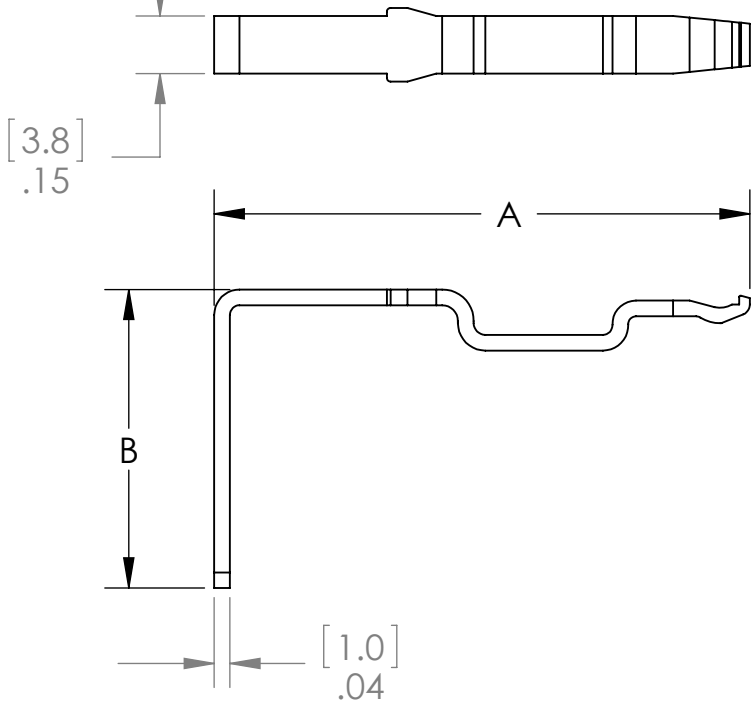
VERTICLE CONTACT



RIGHT ANGLE CONTACT
HORIZONTAL (TOP)
CAT. NO. 1337G1

RIGHT ANGLE CONTACT
HORIZONTAL (BOTTOM)
CAT. NO. 1336G1

PP15/45
HOUSINGS
(1327 SERIES)



STRAIGHT CONTACT
VERTICAL MOUNT
CAT. NO. 1335G1

NOTES:

- FOR USE WITH 1327 SERIES HOUSINGS (SOLD SEPARATELY)
- SEE DATA SHEET MOUNTING ACCESSORIES
- SEE SHEET 2 FOR SAMPLE PCB LAYOUT AND BLOCKING CONFIGURATIONS
- MATERIAL:
CONTACT: COPPER ALLOY PLATED WITH 200 MICRO-INCHES MIN. MATTE TIN

6	ECRN-15763	TWE	1/15/2015
5	ECRN-15089	TWE	3/26/12
4	ECRN 14312 ADD PCB LAYOUT TOLERANCES	AMS	8/26/08
3	ECRN 14124 - ADD SHEET 2	AMS	5/2/07
2	ECRN 14129 - ALTER APPEARANCE OF LEAD-IN	AMS	3/30/07
REV.	DESCRIPTION	APPRV	DATE

REVISIONS

PART NUMBER	DESCRIPTION	"A"		"B"	
		IN	MM	IN	MM
1335G1	HP PCB, STRAIGHT	1.12	28.5	N/A	
1336G1	HP PCB, RIGHT-ANGLE, BOTTOM	1.08	27.5	0.47	11.9
1337G1	HP PCB, RIGHT ANGLE, TOP	1.40	35.4	0.78	19.7

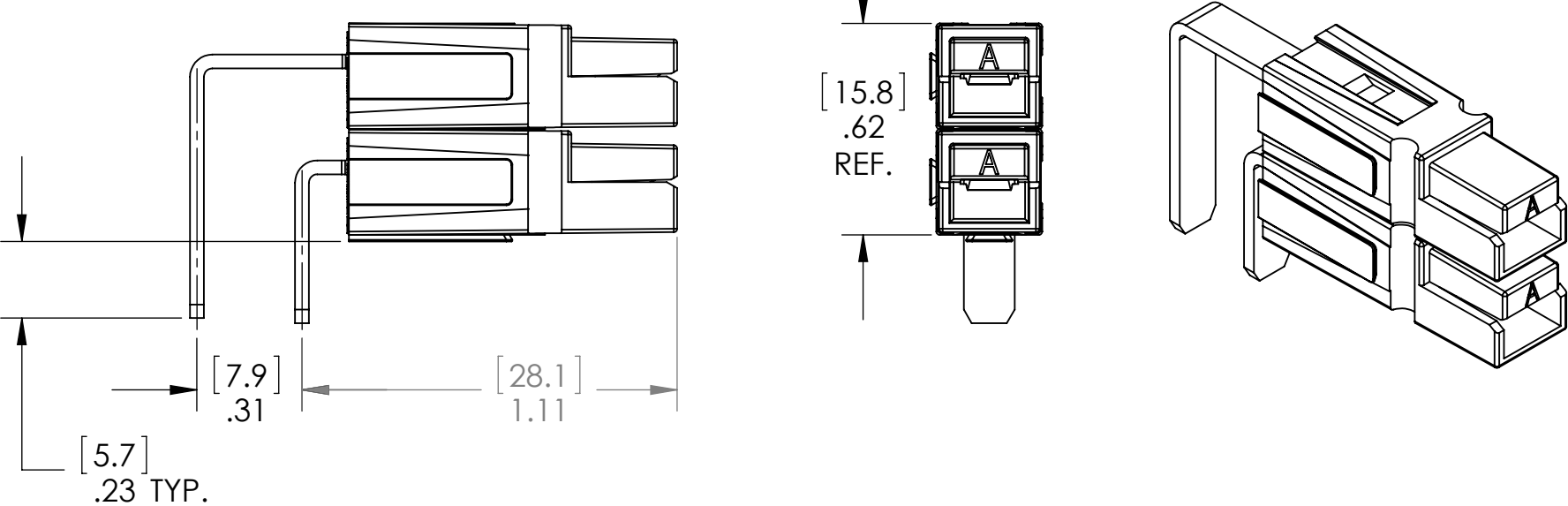
DIMENSIONS ARE IN:		INCH [MM]		APPROVALS		ANDERSON POWER PRODUCTS	
UNLESS OTHERWISE STATED		TOLERANCES:		DRAWN		HIGH POWER PCB SERIES 45 AMP PCB POWERPOLE™ SALES OUTLINE DRAWING	
DECIMALS (INCH)		DECIMALS (MM)	ANGLES	CHECKED			
.XX ± .02		.X ± .5	±2°	BD	2/10/2006		
SURFACE FINISH:		MACHINED 128µin [3.2µ] ✓		MFG APPRV			
MOLDED 64µin [1.6µ] ✓		MATERIAL: SEE NOTE		DAM	2/10/2006		
FINISH: SEE NOTE		QC APPRV		UFN	2/10/2006		
3rd ANGLE PROJECTION		ENG APPRV		MAW	2/10/2006	SIZE B	DWG NO. B02021S
-CAD GENERATED DRAWING- DO NOT MANUALLY UPDATE DO NOT SCALE		SCALE NONE		CADFILE 02502		REV. 6	
						SHEET 1 OF 2	

THE INFORMATION CONTAINED IN THIS DRAWING IS THE SOLE PROPERTY OF ANDERSON POWER PRODUCTS. ANY REPRODUCTION IN PART OR WHOLE WITHOUT THE WRITTEN PERMISSION OF ANDERSON POWER PRODUCTS IS PROHIBITED.

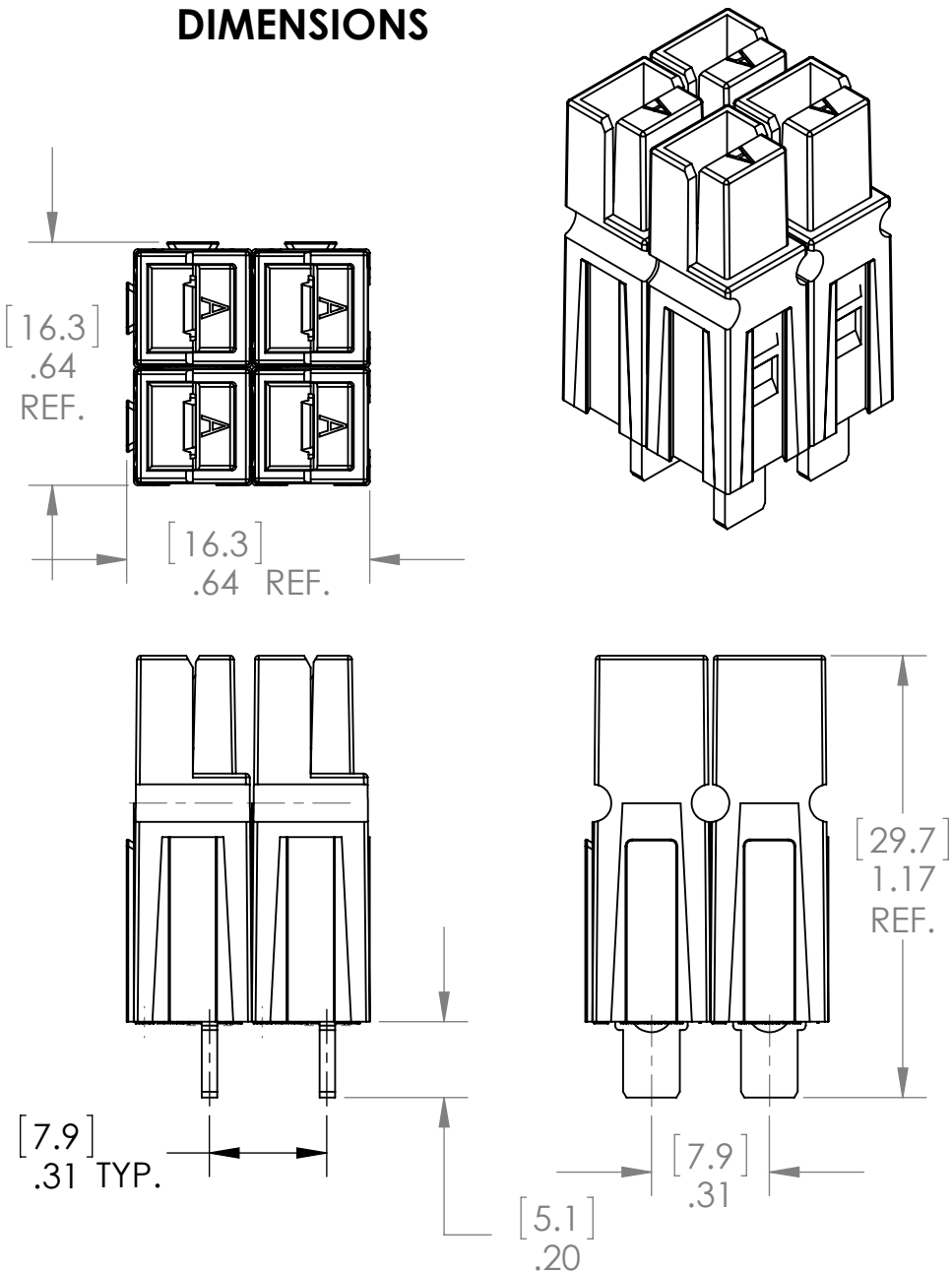
Copyright 2006

ANDERSON POWER PRODUCTS RESERVES THE RIGHT TO ALTER PRODUCT TYPES, THEIR TECHNICAL DATA, DIMENSION, STYLE AND ACCESSORIES WITHOUT PRIOR NOTIFICATION.

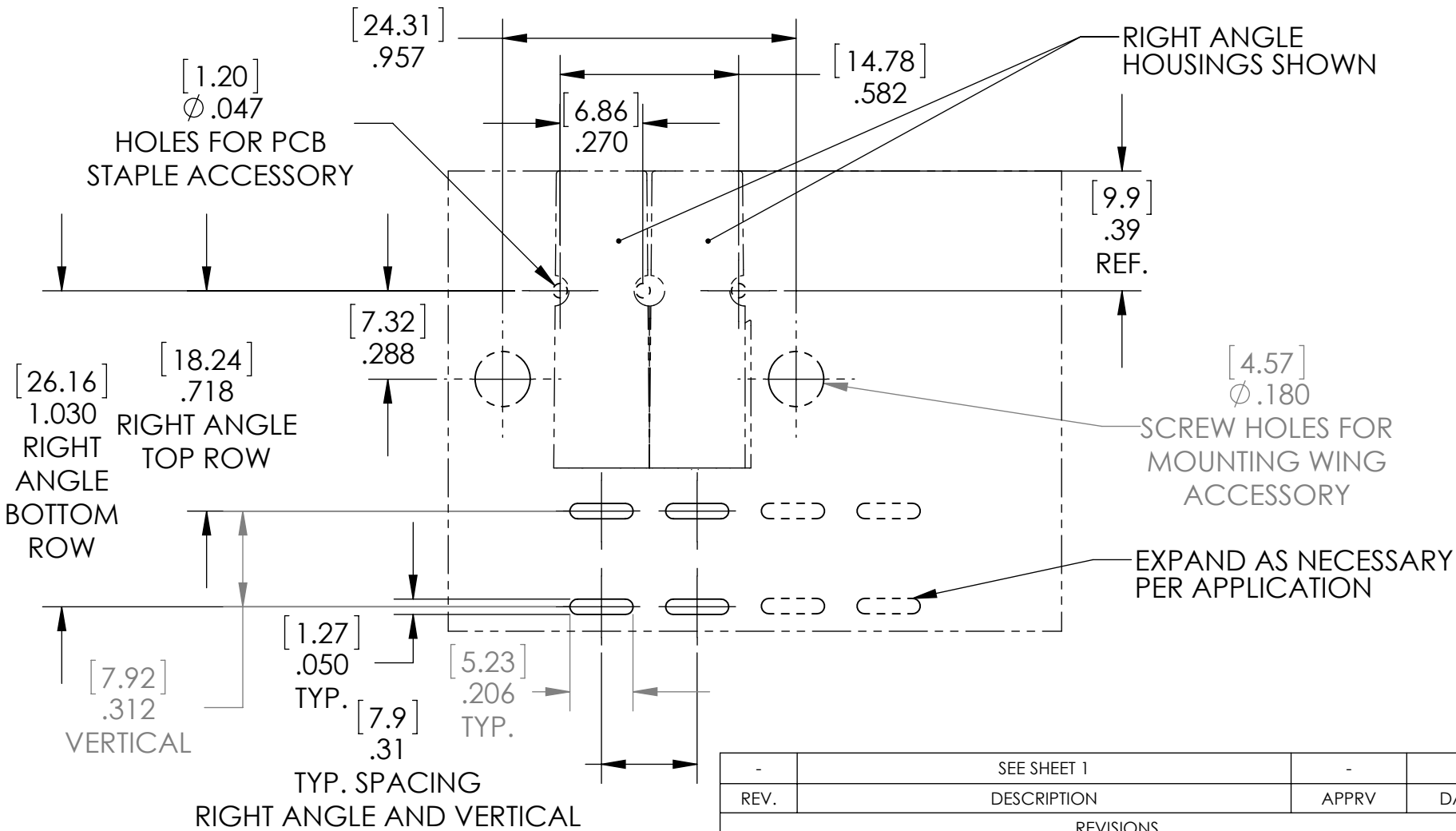
RIGHT ANGLE STACKED HOUSING



VERTICAL BLOCKED HOUSING DIMENSIONS



SAMPLE PCB LAYOUT



DIMENSIONS ARE IN:		INCH [MM]		APPROVALS		ANDERSON POWER PRODUCTS		
UNLESS OTHERWISE STATED				DRAWN		TITLE HIGH POWER PCB SERIES 45 AMP PCB POWERPOLE™ SALES OUTLINE DRAWING		
TOLERANCES:				CPP	2/9/2006			
DECIMALS (INCH)		DECIMALS (MM)	ANGLES	CHECKED				
.XX	± .02	.X	± .5	BD	2/10/2006			
SURFACE FINISH:				MFG APPRV		SIZE B DWG NO. B02021S REV. 6		
MACHINED		128µin [3.2µ]	✓	DAM	2/10/2006			
MOLDED		64µin [1.6µ]	✓	QC APPRV				
MATERIAL:				UFN	2/10/2006			
SEE NOTE				ENG APPRV		SCALE NONE CADFILE 02502 SHEET 2 OF 2		
FINISH:				MAW	2/10/2006			
SEE NOTE								

Mouser Electronics

Authorized Distributor

Click to View Pricing, Inventory, Delivery & Lifecycle Information:

[Anderson Power Products:](#)

[PP45PC22S](#)