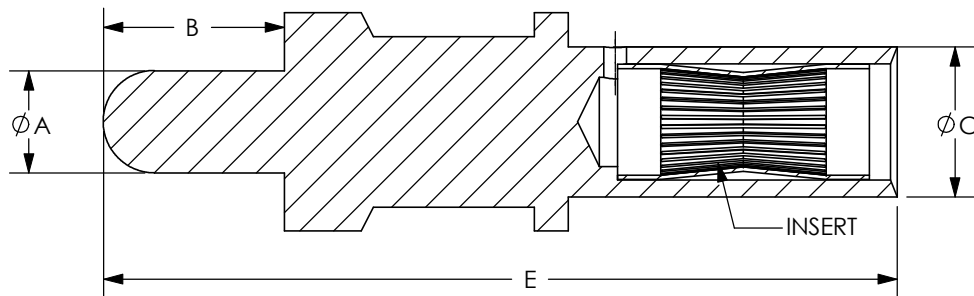
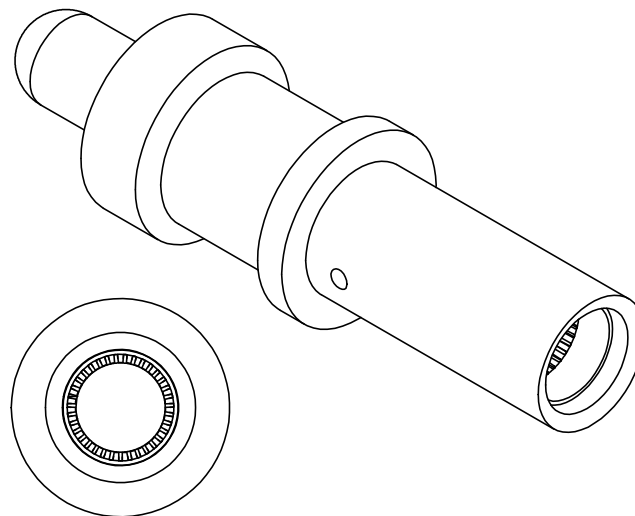
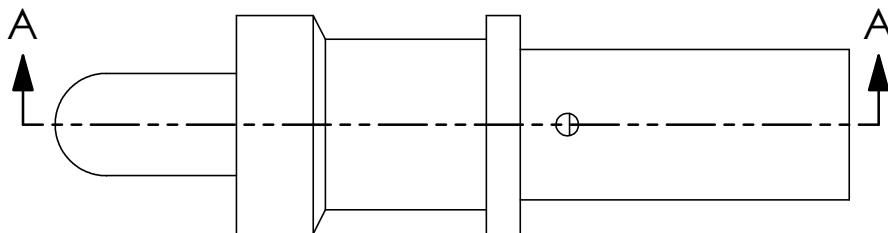


THE INFORMATION CONTAINED IN THIS DRAWING IS THE SOLE PROPERTY OF ANDERSON POWER PRODUCTS. ANY REPRODUCTION IN PART OR WHOLE WITHOUT THE WRITTEN PERMISSION OF ANDERSON POWER PRODUCTS IS PROHIBITED.

ANDERSON POWER PRODUCTS RESERVES THE RIGHT TO ALTER PRODUCT TYPES, THEIR TECHNICAL DATA, DIMENSION, STYLE AND ACCESSORIES WITHOUT PRIOR NOTIFICATION.

REV.	DESCRIPTION OF CHANGES	BY:	DATE
1	ECRN 13607	CMS	7/8/03
2	ECRN 13614	CMS	8/14/03
3	ECRN 13619	CMS	8/26/03
4	ECRN 13636	CMS	11/12/03
5	ECRN 13896-ADD LUBE SPEC	DD	8/25/05
6	ECRN 14415: SHOW THRU HOLE	CMS	4/11/09



SECTION A-A

DIM	A		B		C		E	
PART NO.	IN	MM	IN	MM	IN	MM	IN	MM
SP08-SN	.14	3.6	.31	7.8	.21	5.3	1.10	28.0
SP12-SN	.09	2.4	.25	6.4	.16	4.1	1.03	26.2
SP16-SN	.06	1.6	.19	4.7	.12	3.0	1.00	25.4
SP20-GN	.04	1.0	.20	5.1	.08	2.0	.98	25.0
SP12-SN300	.09	2.4	.31	7.8	.16	4.1	1.10	28.0
SP20-GN300	.04	1.0	.31	7.8	.08	2.0	1.10	28.0

①
②
③
④

NOTES:

1. SPO8-SN FOR USE IN 75 AMP POWER DRAWER ONLY
2. SP16-SN FOR USE IN 35 AMP POWER DRAWER ONLY
3. MATERIALS: SOCKET BODY- COPPER ALLOY
SOCKET INSERT- BeCu
4. PLATING: SOCKET INSERTS- GOLD OVER NICKEL
"SN" PART NUMBERS: BODY IS PLATED SILVER OVER NICKEL
"-GN" PART NUMBERS: BODY IS PLATED GOLD OVER NICKEL
5. LUBE PER SPEC 1S1136

COPYRIGHT 2003 ANDERSON POWER PRODUCTS. ALL RIGHTS RESERVED. UNAUTHORIZED REPRODUCTION HEREBY PROHIBITED.

DIMENSIONS ARE IN INCHES DIMENSIONS IN PARENTHESES [] ARE IN MILLIMETERS	CAD GENERATED DRAWING, DO NOT MANUALLY UPDATE		ANDERSON POWER PRODUCTS	
	APPROVALS	DATE		
TOLERANCES ARE: 2PL- ±.02 [±.5]	DRAWN CMS	6/13/03	SOCKET PCB CONTACTS FOR POWER DRAWER SERIES CONNECTORS	
MATERIALS: SEE NOTES	CHECKED DJD	6/13/03		
FINISH SEE NOTES	RESP ENG MAW	6/18/03		
DO NOT SCALE DRAWING	MFG ENG DAM	6/18/03		
	QUAL ENG RPO	6/18/03	SIZE A	SPECIFICATION: 114445S1
			SCALE NONE	REV. 6
			CADFILES/01770	SHEET 1 OF 1

Mouser Electronics

Authorized Distributor

Click to View Pricing, Inventory, Delivery & Lifecycle Information:

Anderson Power Products:

[SP12-SN300](#) [SP20-GN300](#)