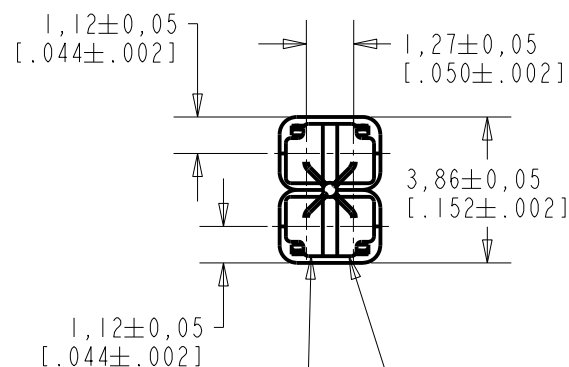
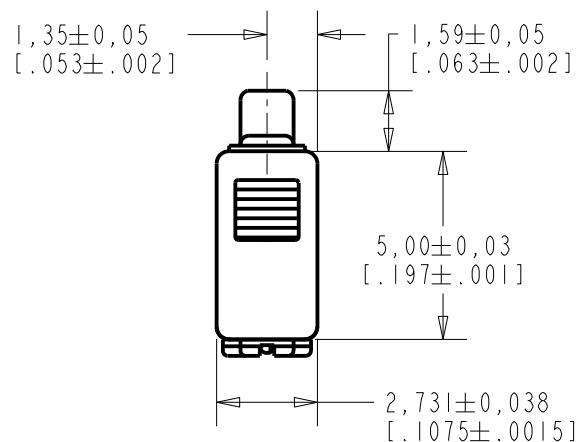


SWFK-32255-000

SHT 1.1

NOTES:

- 1 A POSITIVE GOING VOLTAGE AT TERMINAL 2, RELATIVE TO TERMINAL 1, CAUSES A DECREASE IN PRESSURE AT THE SOUND OUTLET.
- 2 LOCATED FROM TWO SURFACES FOR CUSTOMER CONVENIENCE. ONLY APPLICABLE FROM ONE SURFACE, NOT TO BE USED TOGETHER.

**RED CONTROLLED**

$1,12 \pm 0,05$   
[.044 ± .002]

1  
TERMINAL 1  
(NEGATIVE)

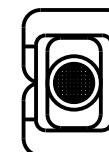
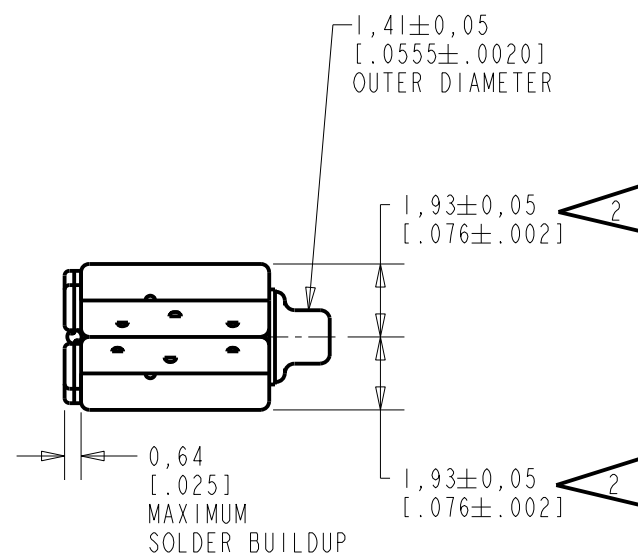
TERMINAL 2  
(POSITIVE)



SCALE 2:1

NOMINAL WEIGHT  
0.19 GRAMS

DIMENSIONS IN MILLIMETERS [INCHES]



Revision	C.O. #	Implementation Date	RELEASE LEVEL	REVISION
			Active	A
A	CI0115507	1-26-14		

SCALE: 5:1

DO NOT SCALE DRAWING

TITLE: RECEIVER

OUTLINE DRAWING

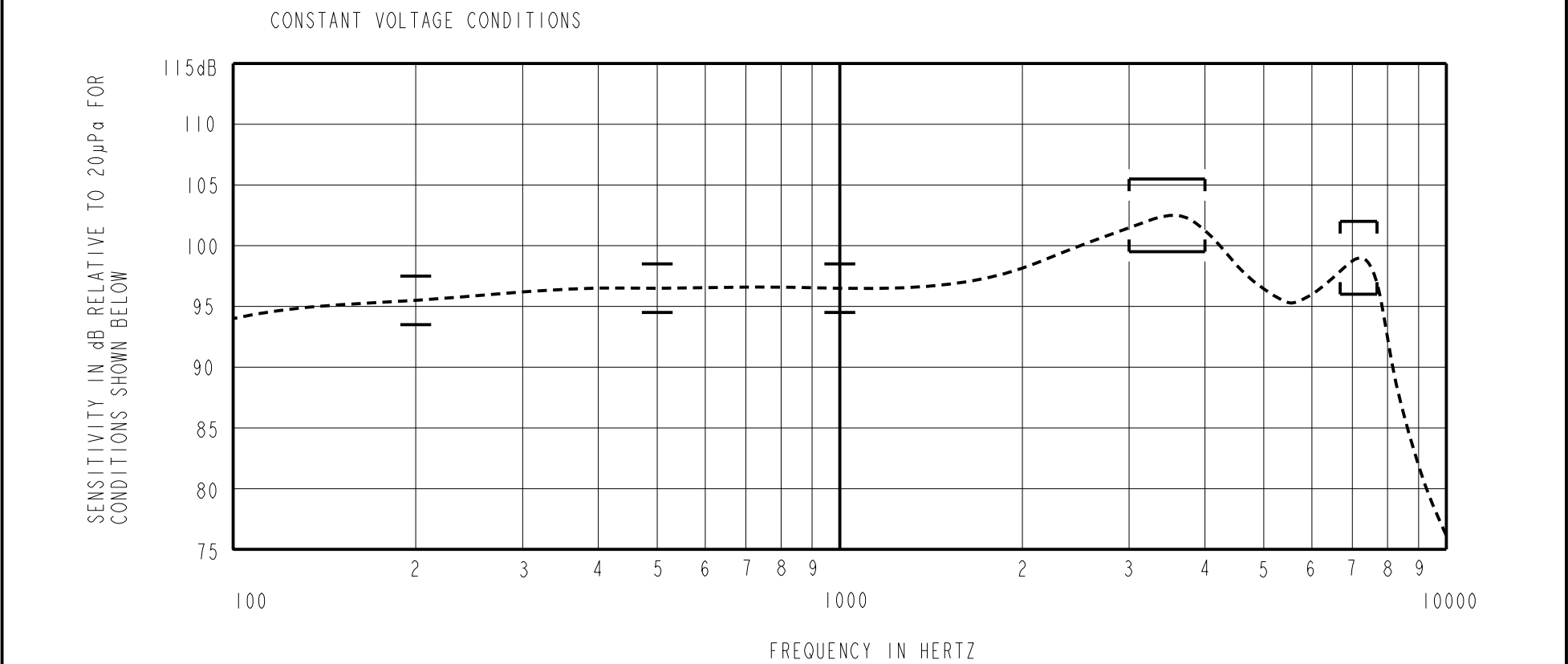
SWFK-32255-000

SHT 1.1

DR. BY	DATE
LW	1-26-14
CK. BY	DATE
GJP	1-28-14
APP. BY	DATE
GJP	1-28-14

**KNOWLES ELECTRONICS**  
ITASCA, ILLINOIS U.S.A.

NOTE: SPECIFICATIONS FOLLOWED BY AN ASTERISK (\*) ARE 100% TESTED.



ACOUSTICAL

SENSITIVITY\*  
DEVICE WILL PRODUCE THE SPL LISTED BELOW UNDER TEST CONDITION IN TABLE 3.  
NOMINAL SENSITIVITY AT 1kHz IS dB RELATIVE TO 20 µPa. ALL OTHER VALUES  
IN dB RELATIVE TO THE SENSITIVITY AT 1kHz.

FREQUENCY (Hz)	MINIMUM	NOMINAL	MAXIMUM
200	-3.0	-1.0	+1.0
500	-2.0	0.0	+2.0
1000	-2.0	96.5	+2.0
3000-4000 PEAK	+3.0	+6.0	+9.0
6700-7700 PEAK	-0.5	+2.5	+5.5

TABLE 1

TOTAL HARMONIC DISTORTION\*  
DEVICE WILL NOT EXCEED TOTAL HARMONIC DISTORTION LEVELS LISTED BELOW.

FREQUENCY (Hz)	AC DRIVE (V rms)	DC BIAS (V)	LIMIT (%)
1166	.094	0	5
1750	.094	0	5
1750	.265	0	10

TABLE 2

TEST CONDITIONS

NOMINAL SOURCE VOLTAGE	.094 V rms, 0 mA DC BIAS
SOURCE IMPEDANCE	<0.2 Ohm
TUBING	10mm [.394"] LONG, 1mm [.039"] I.D.
COUPLER CAVITY	2 CM <sup>3</sup> , SIMULATED ANSI S3.7 TYPE HA-3 (IEC 60318-5)

TABLE 3

ELECTRICAL

DC RESISTANCE	6.3 Ohms ± 10%*
IMPEDANCE @ 500 Hz	6.6 Ohms ± 20%
IMPEDANCE @ 1kHz	7.0 Ohms ± 20%

TABLE 4

ISOLATION: CASE WILL BE ELECTRICALLY ISOLATED FROM THE COIL CIRCUIT.

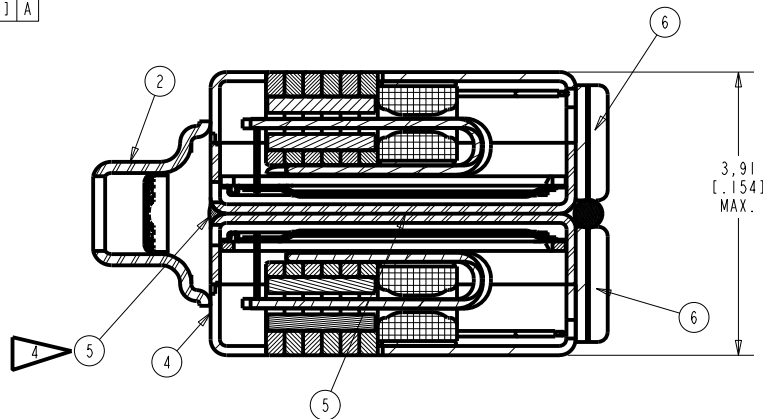
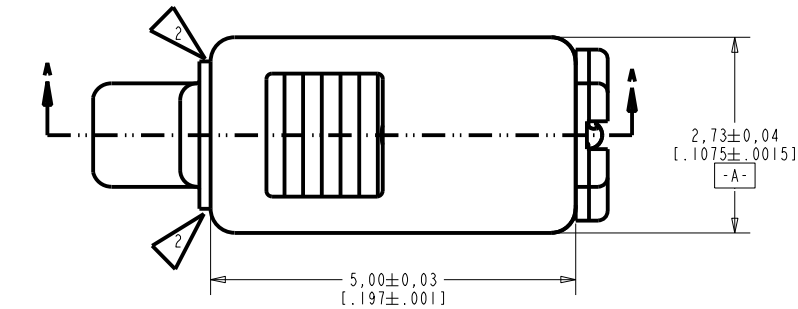
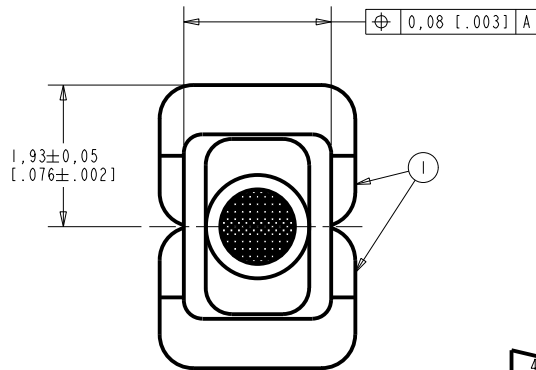
MECHANICAL

PORT LOCATION: 12S  
SOLDER TYPE: SAC305  
TEMPERATURE  
OPERATING: SENSITIVITY WILL NOT VARY MORE  
THAN +1 / -3 dB FROM -17°C TO 63°C.  
STORAGE: -40°C TO 63°C.

RED CONTROLLED

PROPRIETARY NOTE: THIS DOCUMENT CONTAINS INFORMATION WHICH IS THE PROPRIETARY PROPERTY OF KNOWLES ELECTRONICS, LLC. OR ITS AFFILIATED ENTITIES. IT IS ISSUED TO ANY THIRD PARTY EARLY IN THE DESIGN PROCESS FOR REVIEW ONLY. IT IS NOT TO BE REPRODUCED OR TRANSMITTED IN ANY FORM OR BY ANY MEANS, WITHOUT PRIOR WRITTEN PERMISSION OF, AND MUST BE RETURNED UPON REQUEST BY, KNOWLES ELECTRONICS, LLC.

SWFK-32255-000



SECTION A-A

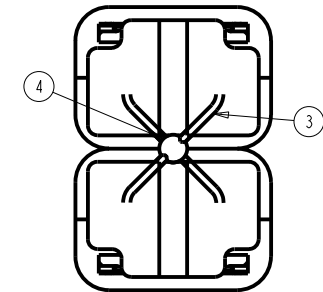
NOTES:

1. ITEM NUMBERS (SHOWN THUS **8**) CORRESPOND TO ITEM NUMBER ON BILL OF MATERIAL.

**2** AIRTIGHT SEAL ALL AROUND.

3. THIS ASSEMBLY IS GLUED TOGETHER AND THE TUBE IS WELDED TO THE CUPS.

**4** SEAL JOINT ACROSS FRONT OF RECEIVER.

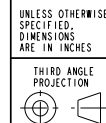


DIMENSIONS IN MILLIMETERS (INCHES)

RELEASE LEVEL		REVISION	
Active		A	
SCALE: 15:1		DO NOT SCALE DRAWING	
DR. BY	DATE	CH. BY	DATE
LW	1-26-14	GJP	1-28-14
APP. BY	DATE	GJP	1-28-14

RED CONTROLLED

MATERIAL		SEE BILL OF MATERIAL		FINISH ---	
REF.	NOTE	A C10115507		TITLE	
				RECEIVER ASSEMBLY	
				SWFK-32255-000	
				SHEET 3.1	



KNOWLES ELECTRONICS  
ITASCA, ILLINOIS U.S.A.

UNLESS OTHERWISE SPECIFIED, DIMENSIONS ARE IN INCHES

KE131.B51ZE.FRM REV: B

SWFK-32255-000			KNOWLES ELECTRONICS			SWFK-32255-000		
Sheet 4.1			ITASCA, ILLINOIS U.S.A.			Sheet 4.1		
Dr. By Date			Subject: RECEIVER ASSEMBLY			Revision		
Ch. GJP 1-28-14						A		
App. GJP 1-28-14								
COL. 1			2			3		
Part or Dwg. no.			Tot. Req.			Nomenclature:		
WBFK-31142-000			2			RECEIVER ASSEMBLY		
FH-172-015			1			TUBE & SCREEN ASSEMBLY		
103-012			A/R			WIRE		
13-825-3145			A/R			CEMENT		
13-637			A/R			CEMENT		
285-007-221			A/R			SOLDER LEAD FREE		
<div>RED CONTROLLED</div>								
REVISION			SWFK-32255-000 Sheet 4.1					
A c.o. C10115507			PROPRIETARY NOTE: THIS DOCUMENT CONTAINS INFORMATION WHICH IS THE PROPRIETARY PROPERTY OF KNOWLES ELECTRONICS, LLC. OR ITS AFFILIATED ENTITIES. IT IS ISSUED IN STRICT CONFIDENCE AND SHALL NOT BE REPRODUCED, COPIED, USED, OR DISCLOSED TO ANY THIRD PARTY PARTIALLY OR WHOLLY IN ANY MANNER WITHOUT PRIOR WRITTEN PERMISSION OF, AND MUST BE RETURNED UPON REQUEST BY, KNOWLES ELECTRONICS, LLC.					

PRODUCTION TEST INFORMATION

SOFTWARE REVISION PXI FCAAT	SOFTWARE 2.5 MIN.
HARDWARE REVISION PXI FCAAT	KE 1065E.008 MIN.
TEST BOARD	T4530
TEST COUPLER	T8049

PHASE TEST

FREQUENCY (Hz)	AC DRIVE (mA <sub>rms</sub> )	DEGREE		LIMIT
		MIN		MAX
500	5.8	140		220

RED CONTROLLED

KNOWLES ELECTRONICS  
ITASCA, ILLINOIS U.S.A.

Revision	C.O. #	Implementation Date	RELEASE LEVEL	REVISION
			Active	A
A	C10115507	1-26-14		
WHEN TEST LIMITS ARE USED TO ESTABLISH INCOMING INSPECTION ACCEPTANCE/REJECTION CRITERIA, CORRELATION OF TEST EQUIPMENT WITH KNOWLES IS ALSO REQUIRED FOR ELIMINATION OF EQUIPMENT AND TEST METHOD VARIATION			DR. BY	DATE
			LW	1-26-14
TITLE: RECEIVER			CK. BY	DATE
			GJP	1-28-14
PERFORMANCE SPECIFICATION			APP. BY	DATE
			GJP	1-28-14
			SWFK-32255-000	
			SHT 5.1	

# Mouser Electronics

Authorized Distributor

Click to View Pricing, Inventory, Delivery & Lifecycle Information:

Knowles:

[SWFK-32255-000](#)