

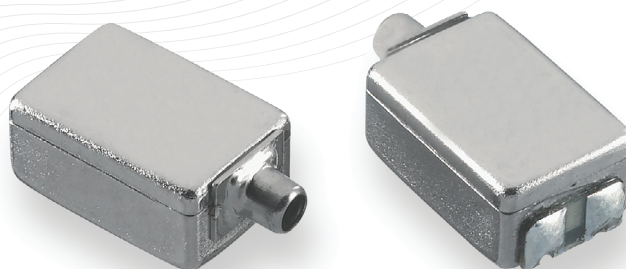
# Balanced Armature Driver

## ED-26805-000

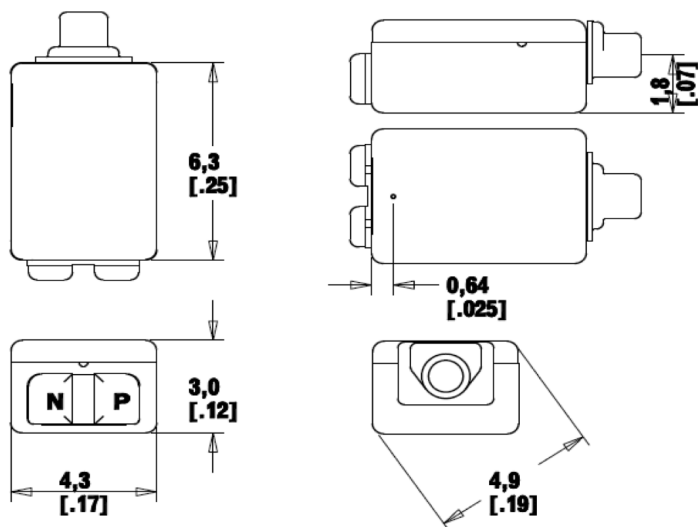
Single Full-range

### Product Features:

- Small size
- Excellent price/performance
- Market proven
- May be used as mid-range or mid-tweeter
- RoHS compliant



### Outline Drawing mm (inches)



Ordering Information:  
Model Number: ED-26805-000

Phone: (630) 250-5100  
Fax: (630) 250-0575  
info@knowles.com

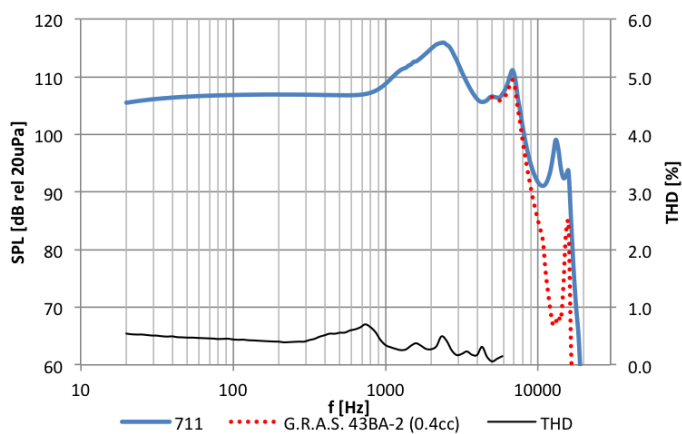
Knowles  
1151 Maplewood Drive  
Itasca, Illinois 60143

# Balanced Armature Driver

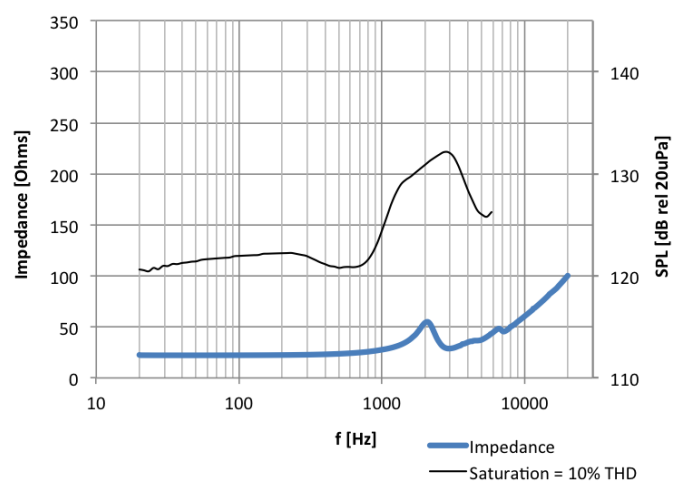
## ED-26805-000

Single Full-range

### Frequency Response and THD



### Impedance and Saturation SPL



### Testing Conditions

- using 100mV rms drive signal
- IEC60318-4 (711) coupler
- ..... G.R.A.S. 43BA-2 (0.4cc)
- THD

### Typical Performance at 1kHz

Impedance	28	Ohms
Sensitivity to 100mV	109	dB SPL
Sensitivity to 1mW	113	dB SPL
Max SPL <sup>a</sup>	123	dB SPL
THD at 94dB SPL	0.3	%
THD at 100dB SPL	0.3	%

#### Footnotes:

<sup>a</sup> SPL at 10% THD

Note:

- Ask about custom assembly options (lead wires, customer-specified materials, etc.)
- To prevent heat damage, follow soldering guidelines in application note AN13 ([knowles.com](http://knowles.com))
- Measurement data for reference only. Refer to model specification for full dimensions and performance.

Ordering Information:  
Model Number: ED-26805-000

Phone: (630) 250-5100  
Fax: (630) 250-0575  
[info@knowles.com](mailto:info@knowles.com)

Knowles  
1151 Maplewood Drive  
Itasca, Illinois 60143

# Mouser Electronics

Authorized Distributor

Click to View Pricing, Inventory, Delivery & Lifecycle Information:

Knowles:

ED-26805-000