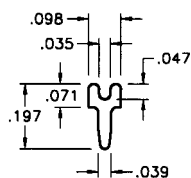


PC TEST POINT TERMINALS

PC TEST POINTS – SLOTTED & LOOP TYPES

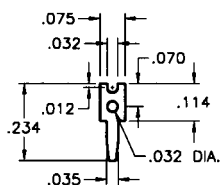
- Low profile, space saving designs for dense packaging
- Wide variety of configurations to suit most applications
- Safe, practical, economical replacement for wire-wrap posts
- Easy mount design, ideal for wave soldering
- Re-fit PC boards without need for re-design
- Provides easy access for production testing and field service troubleshooting
- Positive grip when using J hooks, EZ hooks, grabbers, clips, tips and probes
- Custom test point terminals can be manufactured to your specifications
- Other platings and materials available upon request

SLOTTED



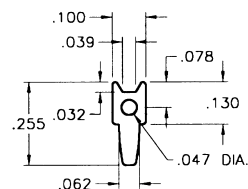
.025 Brass, Tin Plate

CAT. NO. 4950



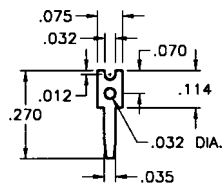
.025 Brass, Tin Plate

CAT. NO. 1030



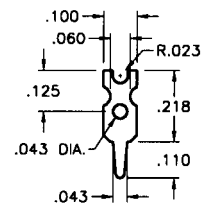
.025 Brass, Tin Plate

CAT. NO. 1032



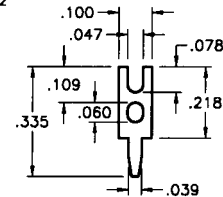
.020 Brass, Tin Plate

CAT. NO. 1031



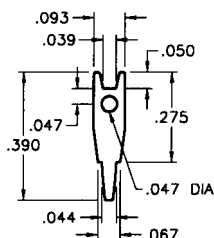
.025 Brass, Tin Plate

CAT. NO. 1034



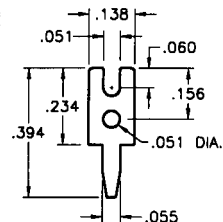
.020 Brass, Tin Plate

CAT. NO. 1035



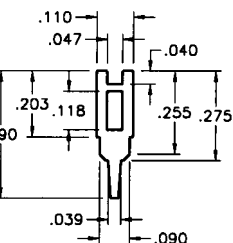
.025 Brass, Tin Plate

CAT. NO. 1036



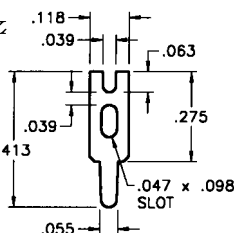
.025 Brass, Tin Plate

CAT. NO. 1039



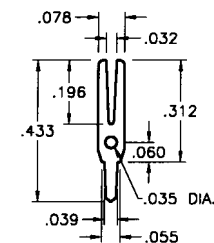
.025 Brass, Tin Plate

CAT. NO. 1040



.025 Brass, Tin Plate

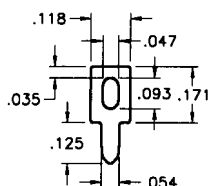
CAT. NO. 4951



.016 Brass, Tin Plate

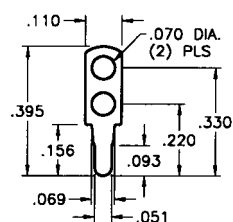
CAT. NO. 1037

LOOP



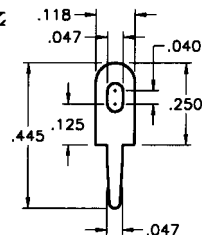
.025 Brass, Tin Plate

CAT. NO. 1033



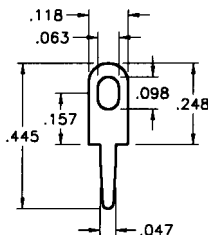
.020 Brass, Tin Plate

CAT. NO. 1038



.025 Brass, Tin Plate

CAT. NO. 1249



.025 Brass, Tin Plate

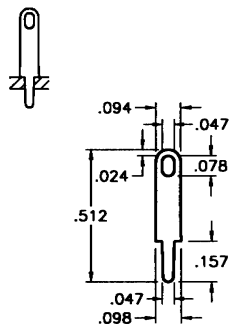
CAT. NO. 4952

PC TEST POINT TERMINALS

Designers
Choice

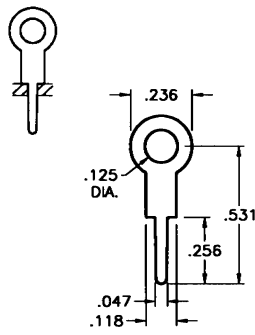


PC TEST POINTS - LOOP TYPES



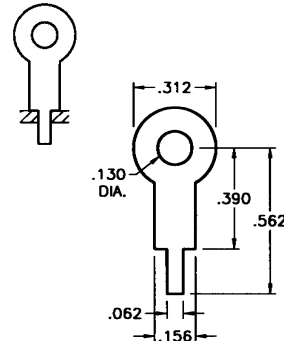
.020 Brass, Tin Plate

CAT. NO. 4953



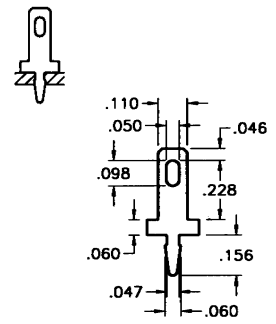
.020 Brass, Tin Plate

CAT. NO. 4954



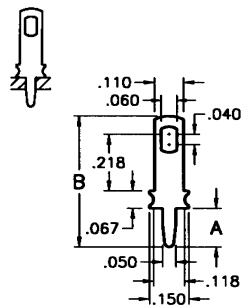
.015 Brass, Tin Plate

CAT. NO. 680



.020 Brass, Tin Plate

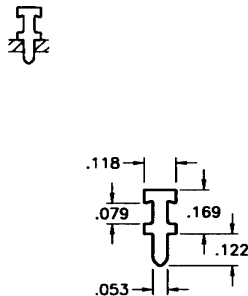
CAT. NO. 1250



.032 Brass, Tin Plate

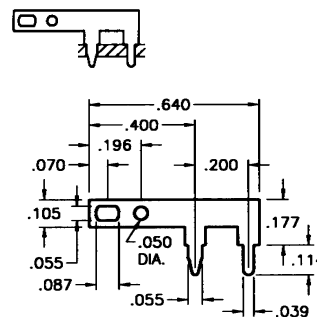
CAT. NO.	A	B
1041	.275	.630
1046	.150	.503

CAT. NO. 5048



.025 Brass, Tin Plate

CAT. NO. 4955



.025 Brass, Tin Plate

CAT. NO. 1045

CUSTOM TEST POINT TERMINALS

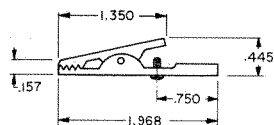
Keystone is fully integrated to meet your total design & production needs.

Manufacturing custom designs & modifications of standard items is our specialty.

Quotations on **special stampings** furnished promptly upon receipt of sample, sketch, print or CAD drawings.

ALLIGATOR CLIPS

LARGE CLIP • SCREW CONNECTION



JAW SPREAD
.315 max.

MATERIAL: Clip: Steel, Nickel Plate

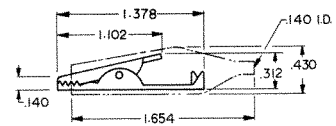
MEDIUM CLIP • SOLDER CONNECTION WITH STRAIN RELIEF



INSULATED



CAT. NO. 5038 - NON-INSULATED



JAW SPREAD
.236 max.

MATERIAL: Clip: Steel, Nickel Plate Insulator: Vinyl

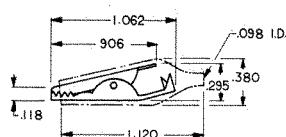
CAT. NO.	INSULATOR COLOR
5039	RED
5040	BLACK

SMALL CLIP • SOLDER CONNECTION WITH STRAIN RELIEF



INSULATED

CAT. NO. 5033 - NON-INSULATED



JAW SPREAD
.236 max.

MATERIAL: Clip: Steel, Nickel Plate Insulator: Vinyl

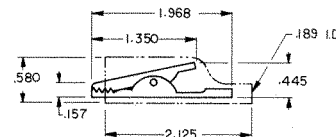
CAT. NO.	INSULATOR COLOR
5034	RED
5035	BLACK
5036	GREEN
5037	YELLOW

LARGE CLIP • SOLDER CONNECTION (BARREL ACCEPTS WIRE OR STANDARD BANANA PLUGS)



INSULATED

CAT. NO. 5044 - NON-INSULATED



JAW SPREAD
.315 max.

MATERIAL: Clip: Steel, Nickel Plate Insulator: Vinyl

CAT. NO.	INSULATOR COLOR
5045	RED
5046	BLACK

Mouser Electronics

Authorized Distributor

Click to View Pricing, Inventory, Delivery & Lifecycle Information:

[Keystone Electronics:](#)

[4955](#)