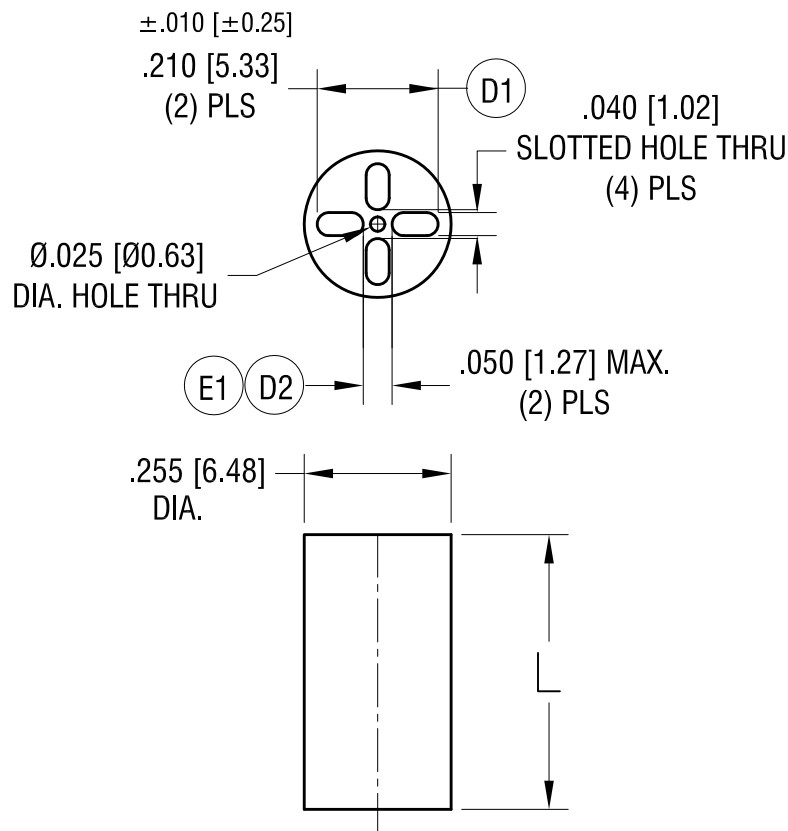


ACTUAL SIZE



P/N 8904



PART NO.	'L' DIM.
8900	.120 [3.04]
8901	.140 [3.55]
8902	.160 [4.06]
8903	.180 [4.57]
8904	.200 [5.08]
8905	.220 [5.58]
8906	.240 [6.09]
8907	.250 [6.35]
8908	.260 [6.60]
8909	.280 [7.11]
8910	.300 [7.62]
8911	.320 [8.12]
8912	.340 [8.63]
8913	.350 [8.89]
8914	.360 [9.14]
8915	.380 [9.65]

5.15.23	(E1) WAS .060±.010 CHANGE AS PER ECN 23-081	E
6.21.22	(D1) WAS .210±.005, (D2) WAS .060±.005 CHANGE AS PER ECN 22-097	D
5.26.11	CHANGE AS PER ECN 11-069	C
6.30.00	CHANGE AS PER ECN 00-059	B
4.6.98	CHANGE AS PER ECR 98-024	A
DATE	DESCRIPTION	REV.

KEYSTONE ELECTRONICS CORP.			
www.keyelco.com • NEW HYDE PARK NY 11040 • Tel (516)328-7500			
PART NAME			
LED SPACER MOUNT			
MATERIAL			
PVC UL 94V-0 (BLACK)			
FINISH		DRN BY	DATE
-		BOONE	3.30.95
		APP'D	SCALE
		RH	3X
TOLERANCES		INCH	[MM]
DECIMAL		± .005	[± 0.13]
ANGULAR		± 1°	
UNLESS OTHERWISE SPECIFIED		CODE	DWG NO.
		C	8900-8915

8900-8915

Mouser Electronics

Authorized Distributor

Click to View Pricing, Inventory, Delivery & Lifecycle Information:

[Keystone Electronics:](#)

[8914](#)