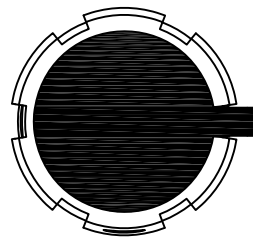
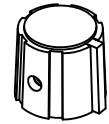
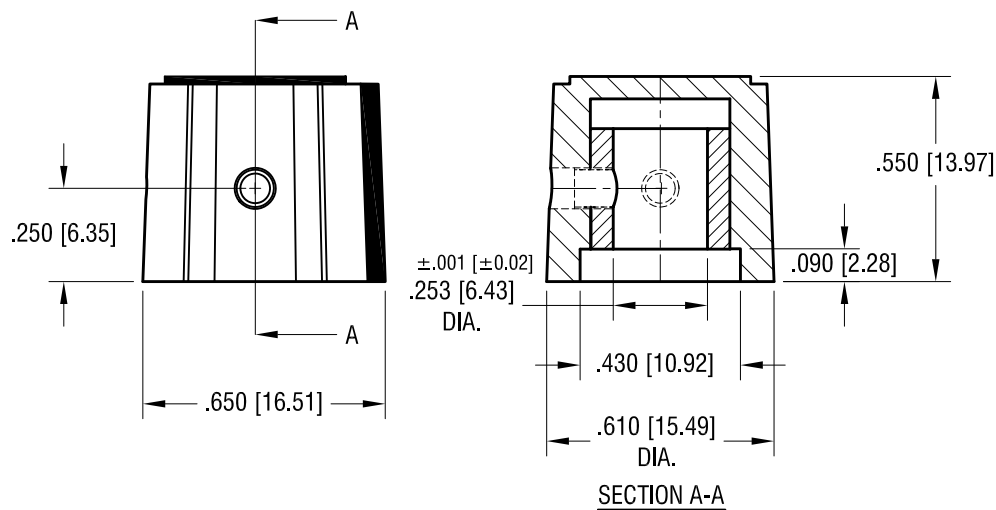


ACTUAL SIZE



COLOR RING AND POINTER  
(SEE COLOR CODE)



NOTES:

1. KNOB: MAT'L:  
OUTER SURFACE (FOR GRIPPING) -  
THERMOPLASTIC ELASTOMER (TPE)  
COLOR- BLACK  
INNER CORE- POLYPROPYLENE (PP)  
SEE COLOR CODE.
2. INSERT: MAT'L: BRASS, NICKEL PLATE
3. SCREW (2) PLS: MAT'L- STEEL  
FINISH: BLACK OXIDE

PART NO.	INNER COLOR
8570	YELLOW
8571	RED
8572	GRAY
8573	BLACK

**KEYSTONE ELECTRONICS CORP.**

www.keyelco.com • NEW HYDE PARK, NY 11040 • Tel (516) 328-7500

PART NAME

SOFT-TOUCH KNOB

MATERIAL

AS NOTED

FINISH

AS NOTED

DRN BY

NT

DATE

6.25.15

APP'D

LN

SCALE

2.5X

TOLERANCES

INCH [MM]

DECIMAL  $\pm .010$  [ $\pm .025$ ]

ANGULAR  $\pm 1^\circ$

UNLESS OTHERWISE SPECIFIED

CODE

C

DWG NO.

8570-8573

DATE

DESCRIPTION

REV.

# Mouser Electronics

Authorized Distributor

Click to View Pricing, Inventory, Delivery & Lifecycle Information:

[Keystone Electronics:](#)

[8573](#)