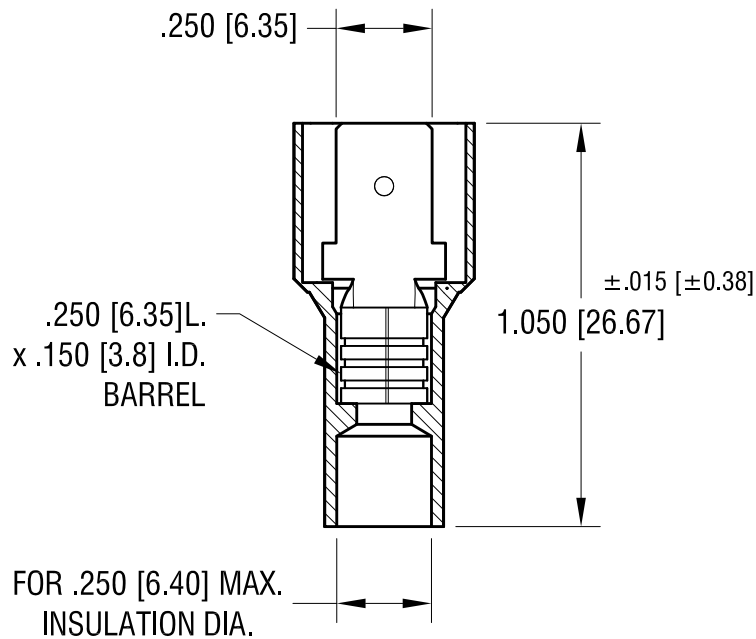
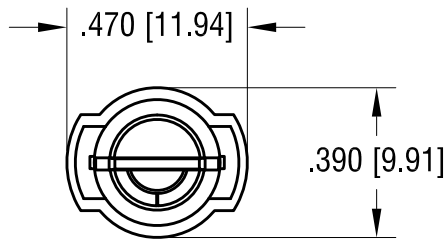
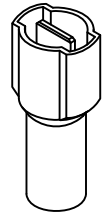


ACTUAL SIZE



NOTE:

1. TERMINAL: MALE TAB  
.250 [6.35] x .032 [0.81] TH'K COPPER, TIN PLATE  
INSULATOR: NYLON 6/6, YELLOW
2. ACCOMMODATES WIRE RANGE 12/10 AWG

**KEYSTONE ELECTRONICS CORP.**

www.keyelco.com • NEW HYDE PARK NY 11040 • Tel (516)328-7500

PART NAME

FULL INSULATED QUICK-FIT TERMINAL, MALE

MATERIAL

AS NOTED

FINISH

AS NOTED

DRN BY

NT

DATE

6.15.11

APP'D

RH

SCALE

2X

TOLERANCES

INCH

[MM]

DECIMAL

± .010 [± 0.25 ]

ANGULAR

± 1°

UNLESS OTHERWISE SPECIFIED

CODE

C

DWG NO.

8300

DATE

DESCRIPTION

REV.

# Mouser Electronics

Authorized Distributor

Click to View Pricing, Inventory, Delivery & Lifecycle Information:

[Keystone Electronics:](#)

[8300](#)