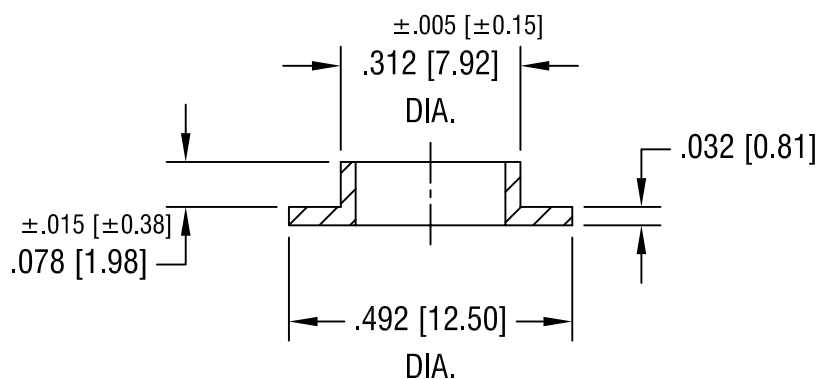


Technical drawing of a hole in a plate. The drawing shows three concentric circles centered on a point defined by intersecting dashed horizontal and vertical lines. A dimension line with arrows at both ends is drawn from the center point to the right, passing through the circles. The dimension value is  $\pm .005$  [ $\pm 0.15$ ]. Below the dimension value, the text  $.260$  [6.60] DIA. is written, followed by HOLE THRU on the next line.



<h1>KEYSTONE ELECTRONICS CORP.</h1> <p>ASTORIA, N.Y. 11105-2017</p>			
PART NAME <h2>NYLON SHOULDER WASHER</h2>			
MATERIAL <h2>NLYON 6/6</h2>			
FINISH -		DRN BY BOONE	DATE 7.15.98
		APPD LN	SCALE 3X
TOLERANCES DECIMAL $\pm .010$ [ $\pm 0.25$ ] ANGULAR $\pm 1^\circ$ UNLESS OTHERWISE SPECIFIED	INCH [MM] C/M	DWG NO. <h1>7688</h1>	

DATE	DESCRIPTION	REV.
------	-------------	------

# Mouser Electronics

Authorized Distributor

Click to View Pricing, Inventory, Delivery & Lifecycle Information:

[Keystone Electronics:](#)

[7688](#)