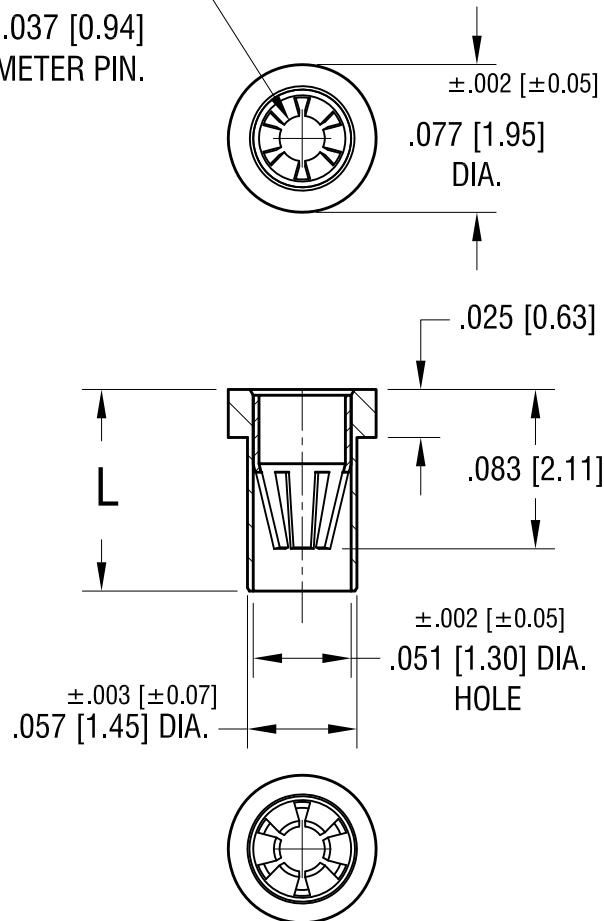


6-FINGER CLOSED  
ENTRY CONTACT FOR  
.025 [0.63] - .037 [0.94]  
DIAMETER PIN.



NOTES:

1. SPRING CONTACT:  
MAT'L - BERYLLIUM COPPER  
FINISH - GOLD PLATE  
BODY:  
MAT'L - BRASS  
FINISH - TIN/LEAD PLATE

2. MOUNTING HOLE DIA.:  $.061$  [ $1.55$ ]

| PART NO. | 'L' DIM.          |
|----------|-------------------|
| 1619-1   | $.095$ [ $2.41$ ] |
| 1619-2   | $.105$ [ $2.67$ ] |
| 1619-3   | $.155$ [ $3.94$ ] |

|          |                          |      |
|----------|--------------------------|------|
| 5.9.11   | CHANGE AS PER ECN 11-060 | B    |
| 10.24.07 | CHANGE AS PER ECN 07-069 | A    |
| DATE     | DESCRIPTION              | REV. |

| KEYSTONE ELECTRONICS CORP.                                      |                           |        |         |
|---|---------------------------|--------|---------|
| www.keyelco.com • ASTORIA, N.Y. 11105-2017 • Tel (718) 956-8900 |                           |        |         |
| PART NAME   |                           |        |         |
| MICRO JACK, SOLDER MOUNT  |                           |        |         |
| MATERIAL  |                           |        |         |
| AS NOTED  |                           |        |         |
| FINISH  |                           | DRN BY | DATE    |
| AS NOTED  |                           | BOONE  | 2.26.07 |
|   |                           | APP'D  | SCALE   |
|   |                           | LN     | 10X     |
| TOLERANCES  | INCH [MM]                 | CODE   | DWG NO. |
| DECIMAL   | $\pm .005$ [ $\pm 0.13$ ] | C/M    | 1619-   |
| ANGULAR   | $\pm 1^\circ$             |        |         |
| UNLESS OTHERWISE SPECIFIED                                      |                           |        |         |

# Mouser Electronics

Authorized Distributor

Click to View Pricing, Inventory, Delivery & Lifecycle Information:

[Keystone Electronics:](#)

[1619-2](#)