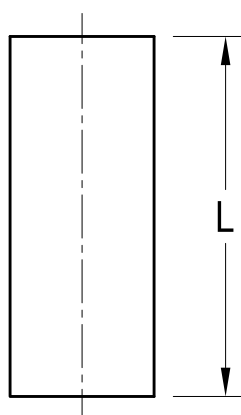


Technical drawing of a circular part. The drawing shows a circle with a center cross (+). A dashed circle is concentric with the center cross. A dimension line with arrows at both ends indicates a diameter of .250 [6.35] DIA. A leader line points to the dashed circle with the text 6-32 THREADED THRU.



PART NO.	'L' DIM.
1548A	.250 [6.35]
1548B	.375 [9.52]
1548C	.500 [12.70]
1548D	.625 [15.88]
1548E	.750 [19.05]
1548F	1.000 [25.4]

www.keyelco.com • NEW HYDE PARK, NY 11040 • Tel (516) 328-7500

THREADED ROUND STANDOFF

BRASS

ZINC PLATE

BOONE

6.11.82

LN

SCALE

TOLERANCES	INCH	[MM]
DECIMAL	$\pm .005$	$[\pm 0.13]$
ANGULAR	$\pm 1^\circ$	
UNLESS OTHERWISE SPECIFIED		

DWG NO.	
---------	--

C

1548A-F

5.5.93 REVISED

A

REV.

DATE _____

DESCRIPTION

Mouser Electronics

Authorized Distributor

Click to View Pricing, Inventory, Delivery & Lifecycle Information:

[Keystone Electronics:](#)

[1548E](#)