

REEL DIA.  
REF.

3.937 [100.0]  
REF.

Technical drawing of a PCB component showing top and side views with dimensions.

**Top View Dimensions:**

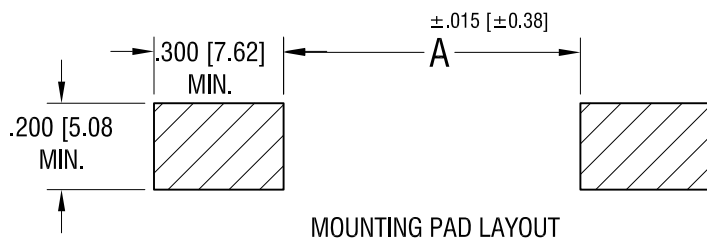
- Overall Width:  $\pm .005$  [ $\pm 0.13$ ]
- Overall Length:  $.559$  [ $14.20$ ]
- Internal Width:  $\pm .005$  [ $\pm 0.13$ ]
- Internal Length:  $.559$  [ $14.20$ ]
- Feature Pitch:  $\pm .005$  [ $\pm 0.13$ ]
- Feature Spacing:  $.157$  [ $4.0$ ]
- Feature Diameter:  $.059$  [ $1.5$ ] DIA. HOLE (TYP.)

**Side View Dimensions:**

- Feature Height:  $.071$  [ $1.80$ ]
- Feature Width:  $.016$  [ $0.4$ ] REF.
- Feature Depth:  $.559$  [ $14.20$ ] REF.

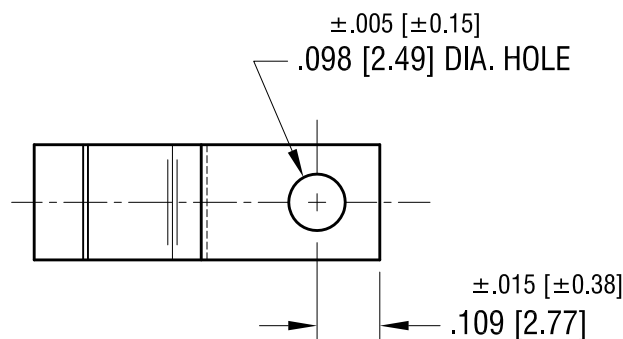
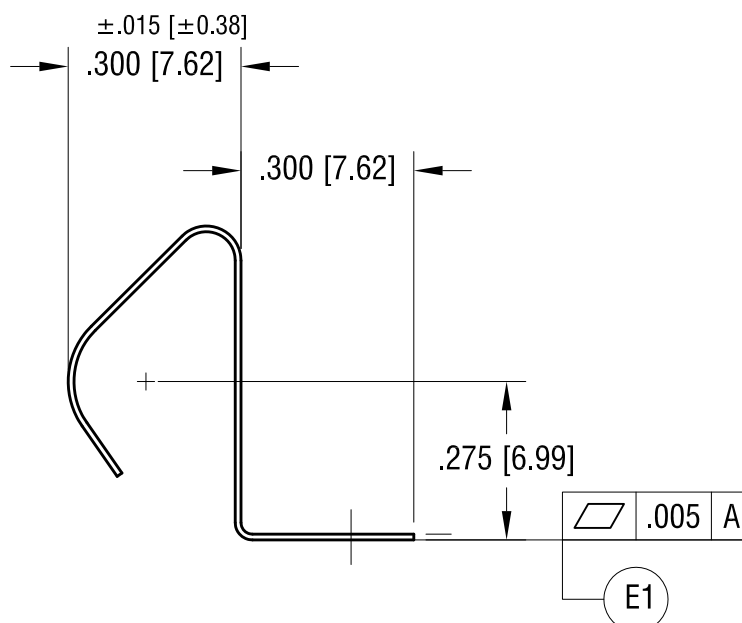
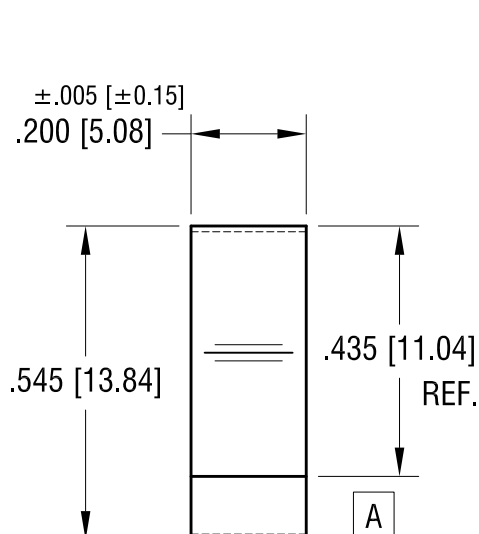
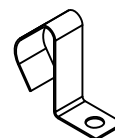
## REV.

THIS DOCUMENT IS THE PROPERTY OF  
KEYSTONE ELECTRONICS CORP. AND  
SHALL NOT BE REPRODUCED, DISTRIBUTED  
OR USED AS A BASIS FOR MANUFACTURE  
WITHOUT PRIOR WRITTEN PERMISSION  
FROM KEYSTONE ELECTRONICS CORP.



FOR BATTERY SIZE:	'A' DIM.
2/3A	1.71 [43.4]
AA	2.380 [60.45]

ACTUAL SIZE



NOTE:

1. HEAT TREAT TO SPRING TEMPER.

7.06.20	ADD FLATNESS (E1) CHANGE AS PER ECN 20-062	E
8.17.04	CHANGE AS PER ECN 04-058	D
DATE	DESCRIPTION	REV.

KEYSTONE ELECTRONICS CORP.			
www.keyelco.com • NEW HYDE PARK, NY 11040 • Tel (516) 328-7500			
PART NAME BATTERY CONTACT, SURFACE MOUNT			
MATERIAL .010 [0.25] TH'K ANNEALED SPRING STEEL			
FINISH TIN NICKEL PLATE		DRN BY BOONE	DATE 3.16.98
		APP'D LN	SCALE 3X
TOLERANCES	INCH [MM]	CODE	DWG NO.
DECIMAL	±.010 [±0.25]	C	5231
ANGULAR	± 1°		
UNLESS OTHERWISE SPECIFIED			

# Mouser Electronics

Authorized Distributor

Click to View Pricing, Inventory, Delivery & Lifecycle Information:

[Keystone Electronics:](#)

[5231TR](#)