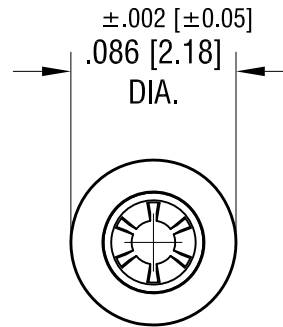
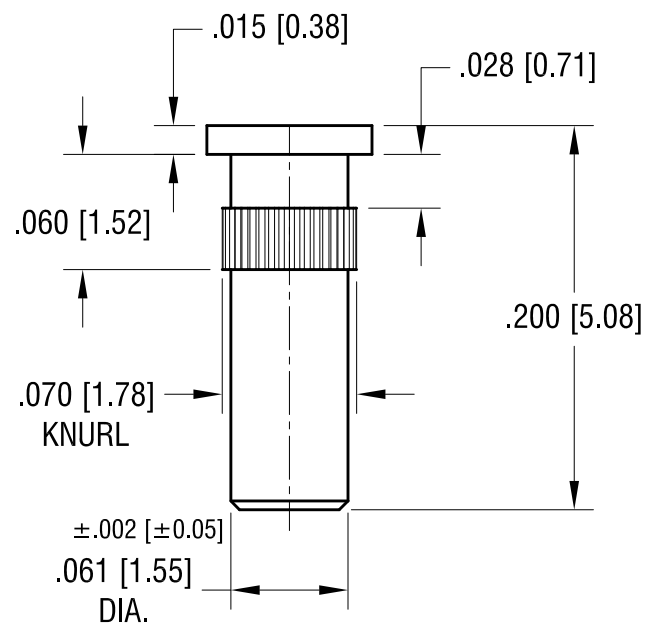
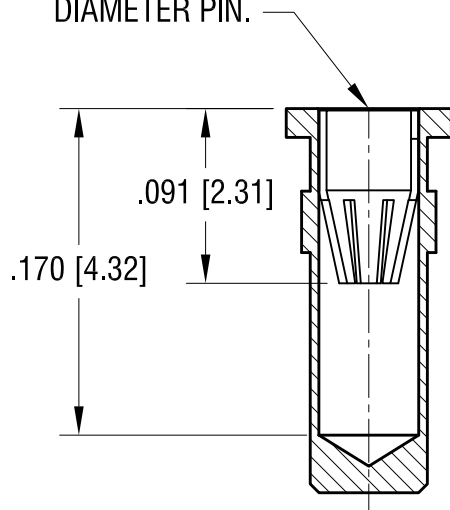


ACTUAL SIZE



6-FINGER CLOSED
ENTRY CONTACT FOR
.022 [0.56] - .034 [0.86]
DIAMETER PIN.



NOTES:

1. BODY:
MAT'L - BRASS
SPRING CONTACT:
MAT'L - BERYLLIUM COPPER
2. MOUNTING HOLE DIA.: .067 [1.70]

KEYSTONE ELECTRONICS CORP.

www.keyelco.com • ASTORIA, N.Y. 11105-2017 • Tel (718) 956-8900

PART NAME

MICRO JACK, PRESS-FIT

MATERIAL

AS NOTED

FINISH

GOLD PLATE

DRN BY

NT

DATE

12.21.10

APP'D

LN

SCALE

10X

TOLERANCES

INCH

[MM]

DECIMAL

± .005 [± 0.13]

ANGULAR ± 1°

UNLESS OTHERWISE SPECIFIED

CODE

C

DWG NO.

1416

DATE

DESCRIPTION

REV.

Mouser Electronics

Authorized Distributor

Click to View Pricing, Inventory, Delivery & Lifecycle Information:

[Keystone Electronics:](#)

[1416](#)