

REEL DIA. REF.
 FEED DIRECTION
 Ø.500 [12.7] MIN. HOLE THRU
 ±.005 [±0.15]
 .472 [12.0]
 ±.012 [±0.30]
 .630 [16.0]
 FEED DIRECTION
 .170 [4.3]
 ±.005 [±0.15]
 .157 [4.0]
 .059 [1.5] DIA. HOLE (TYP.)
 ±.004 [±0.10]
 .295 [7.5]
 ±.004 [±0.10]
 .069 [1.75]
 .290 [7.4] REF.
 .210 [5.3]
 .140 [3.6]
 .016 [0.4] REF.

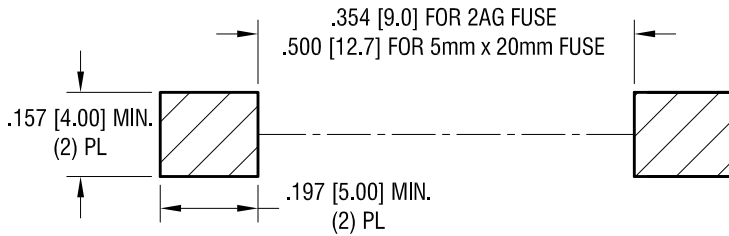
TAPE AND REEL SPECIFICATIONS:

MAT'L - ALL CONDUCTIVE POLYSTYRENE CARRIER
ANSI/EIA-481 STANDARD
.630 [16.0] WIDE; .472 [12.0] PITCH

13.0 [330.2] DIA.700 PIECES OF
PART NO. 3561 PER REEL.

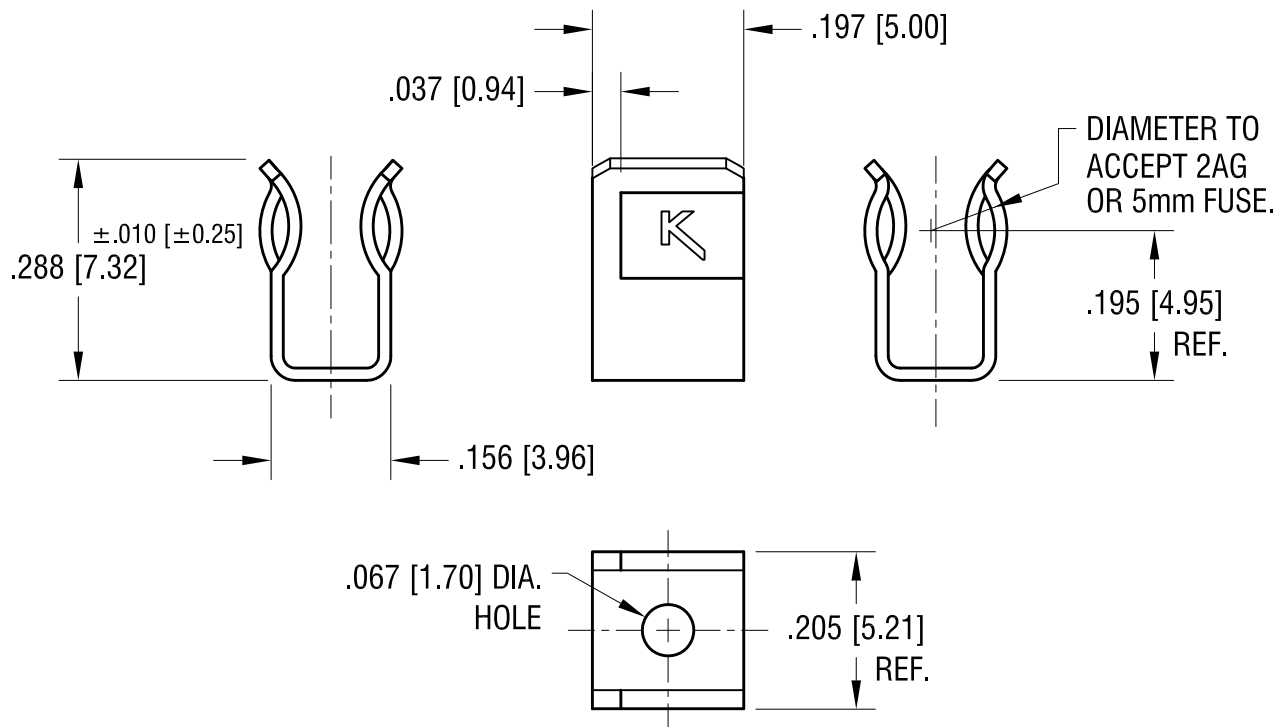
<h1>KEYSTONE ELECTRONICS CORP.</h1> <p>www.keyelco.com • NEW HYDE PARK, NY 11040 • Tel (516) 328-7500</p>			
PART NAME 2AG/5mm SURFACE MOUNT FUSE, ON TAPE			
MATERIAL AS NOTED			
FINISH AS NOTED		DRN BY NT	DATE 7.22.08
		APP'D LN	SCALE X
TOLERANCES DECIMAL INCH [MM] ± .015 [± 0.38] ANGULAR ± 1° UNLESS OTHERWISE SPECIFIED	CODE C	DWG NO. 3561TR	

PAD LAYOUT



THIS DOCUMENT IS THE PROPERTY OF KEYSTONE ELECTRONICS CORP. AND SHALL NOT BE REPRODUCED, DISTRIBUTED OR USED AS A BASIS FOR MANUFACTURE WITHOUT PRIOR WRITTEN PERMISSION FROM KEYSTONE ELECTRONICS CORP.

ACTUAL SIZE



4.11.17	CHANGE AS PER ECN 17-033	E
9.12.12	CHANGE AS PER ECN 12-138	D
12.08.10	CHANGE AS PER ECN 10-08	C
6.08.09	CHANGE AS PER ECN 09-053	B
2.28.08	CHANGE AS PER ECN 08-091	A
DATE	DESCRIPTION	REV.

KEYSTONE ELECTRONICS CORP.			
www.keyelco.com • ASTORIA, N.Y. 11105-2017 • Tel (718) 956-8900			
PART NAME		2AG/5mm SURFACE MOUNT FUSE CLIP	
MATERIAL		.016 [0.40] TH'K BRASS	
FINISH		MATTE TIN PLATE	
TOLERANCES		INCH	[MM]
DECIMAL		$\pm .005$	$[\pm 0.15]$
ANGULAR		$\pm 1^\circ$	
UNLESS OTHERWISE SPECIFIED			
CODE		C	
DRN BY		BOONE	DATE 4.02.98
APP'D		LN	SCALE 4X
DWG NO.		3561	

Mouser Electronics

Authorized Distributor

Click to View Pricing, Inventory, Delivery & Lifecycle Information:

[Keystone Electronics:](#)

[3561TR](#)