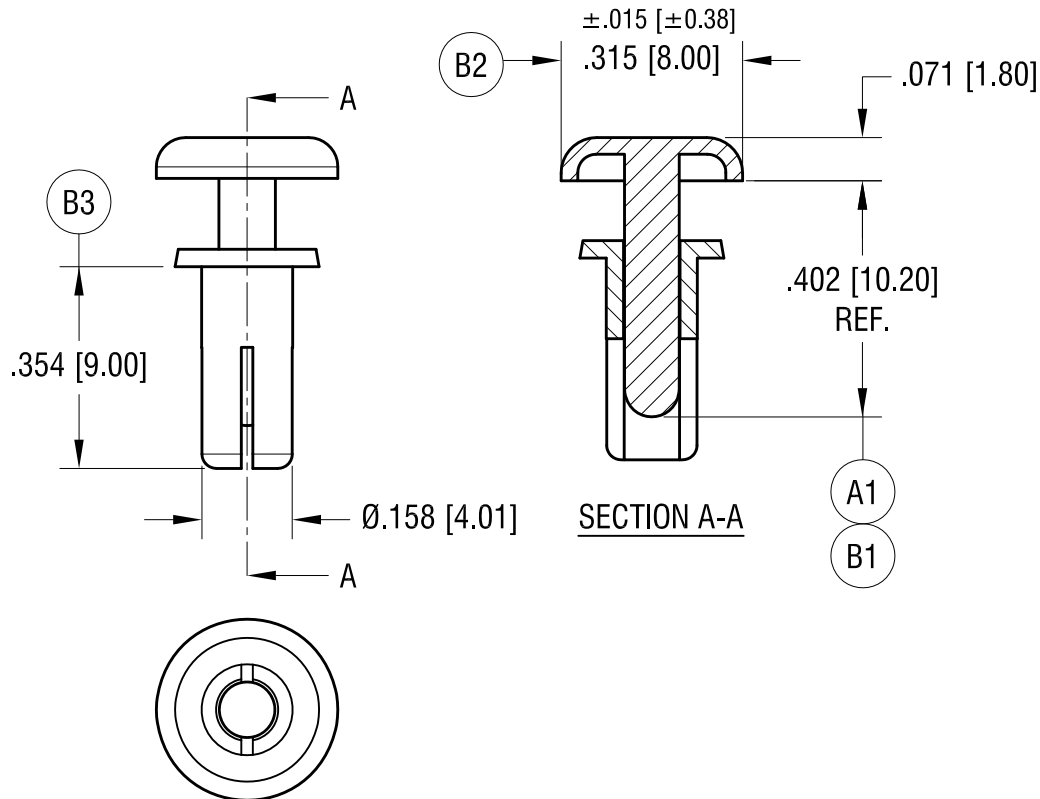
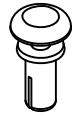


ACTUAL SIZE



NOTES:

1. RECOMMENDED MOUNTING HOLE:
.163 [4.14] DIA.
2. CHASSIS THICKNESS:
.256 [6.50] TO .295 [7.50]

(B1) WAS .410 \pm .010
(B2) WAS .315 \pm .010, (B3) WAS .350

8.27.21 CHANGE AS PER ECN 21-098 B

7.15.21 (A1) WAS .430
CHANGE AS PER ECN 21-069 A

DATE DESCRIPTION REV.

KEYSTONE ELECTRONICS CORP.

www.keyelco.com • NEW HYDE PARK, NY 11040 • Tel (516) 328-7500

PART NAME

SNAP RIVET

MATERIAL

NYLON 6/6 UL 94V-2 (BLACK COLOR)

FINISH

NONE

DRN BY

BOONE

DATE

9.29.06

APP'D

RH

SCALE

3X

TOLERANCES

INCH [MM]

DECIMAL $\pm .010$ [± 0.25]

ANGULAR $\pm 1^\circ$

UNLESS OTHERWISE SPECIFIED

CODE

C

DWG NO.

3449

Mouser Electronics

Authorized Distributor

Click to View Pricing, Inventory, Delivery & Lifecycle Information:

[Keystone Electronics:](#)

[3449](#)