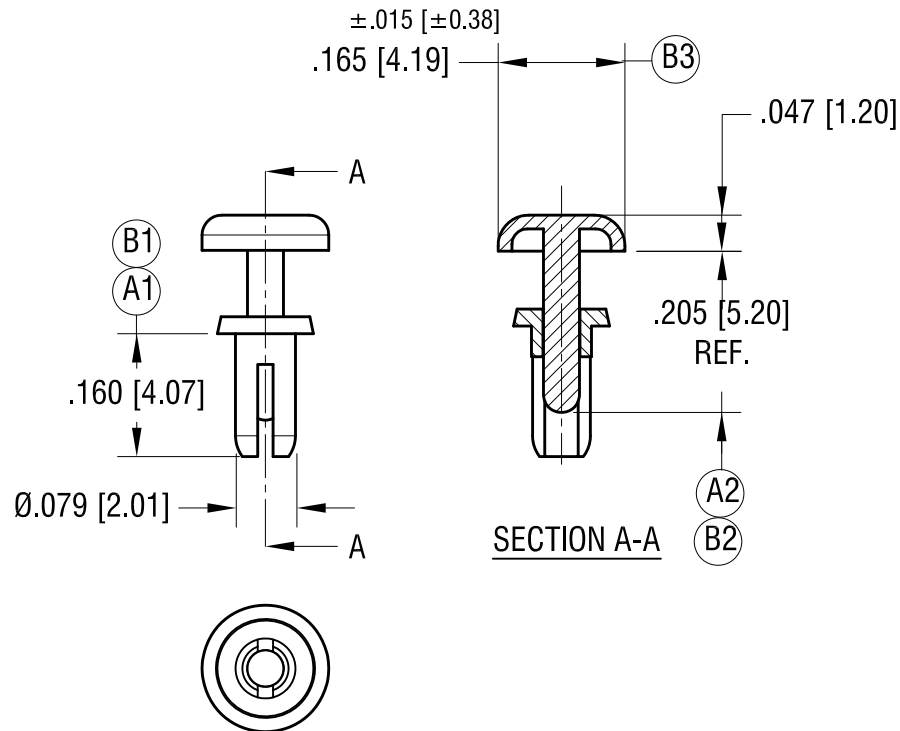


ACTUAL SIZE



NOTES:

1. RECOMMENDED MOUNTING HOLE:  
.085 [ $2.16$ ] DIA.
2. CHASSIS THICKNESS:  
.083 [ $2.10$ ] TO  $.110$  [ $2.80$ ]

|         |   |      |
|---------|---|------|
| 8.27.21 | (B1) WAS .170, (B2) WAS .210<br>(B3) WAS $.165 \pm .010$ , ECN 21-098 | B    |
| 7.15.21 | (A1) WAS .160, (A2) WAS .220<br>CHANGE AS PER ECN 21-069              | A    |
| DATE    | DESCRIPTION   | REV. |

| KEYSTONE ELECTRONICS CORP.                                     |  |                              |         |
|--|--|------------------------------|---------|
| www.keyelco.com • NEW HYDE PARK, NY 11040 • Tel (516) 328-7500 |  |                              |         |
| PART NAME  |  | SNAP RIVET                   |         |
| MATERIAL   |  | NYLON UL 94V-2 (BLACK COLOR) |         |
| FINISH   |  | DRN BY                       | BOONE   |
| NONE   |  | APP'D                        | RH      |
| TOLERANCES   |  | DATE                         | 9.29.06 |
| DECIMAL  |  | SCALE                        | 4X      |
| ANGULAR  |  | CODE                         | DWG NO. |
| $\pm 1^\circ$  |  | C                            | 3441    |
| UNLESS OTHERWISE SPECIFIED                                     |  |                              |         |

# Mouser Electronics

Authorized Distributor

Click to View Pricing, Inventory, Delivery & Lifecycle Information:

[Keystone Electronics:](#)

[3441](#)