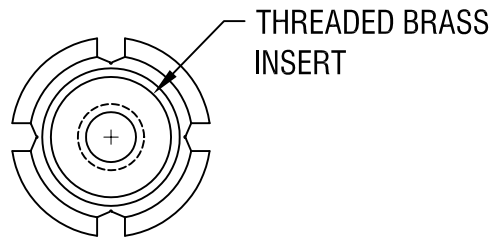
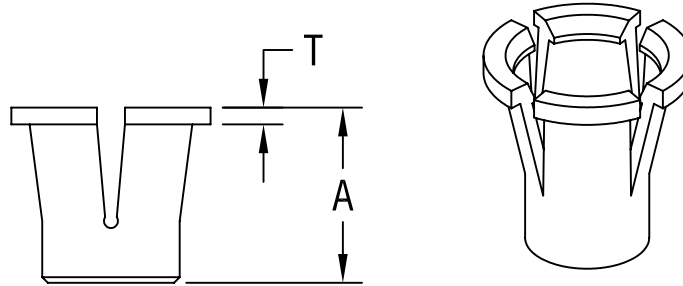


THIS DOCUMENT IS THE PROPERTY OF
KEYSTONE ELECTRONICS CORP. AND
SHALL NOT BE REPRODUCED, DISTRIBUTED
OR USED AS A BASIS FOR MANUFACTURE
WITHOUT PRIOR WRITTEN PERMISSION
FROM KEYSTONE ELECTRONICS CORP.



| PART NO. | THREAD (INSERT) | $\pm .015$ [$\pm .38$] 'A' DIM. | $\pm .010$ [$\pm .25$] 'T' DIM. | (MAX. DIM.) MTG HOLE |
|----------|-----------------|--------------------------------------|--------------------------------------|-------------------------|
| 4341 | 4-40 | .312 [7.92] | .030 [0.76] | .250 [6.35] |
| 4342 | 6-32 | .375 [9.53] | .030 [0.76] | .312 [7.92] |
| 4343 | 8-32 | .500 [12.70] | .030 [0.76] | .406 [10.31] |

KEYSTONE ELECTRONICS CORP.

ASTORIA, N.Y. 11105-2017

PART NAME

BLIND CAPTIVE NUT-PRESS FIT

MATERIAL

MOLDED NYLON, BRASS INSERT

FINISH

-

DRN BY

BOONE

DATE

12.14.06

APP'D

LN

SCALE

NONE

TOLERANCES

INCH [MM]

CODE

DWG NO.

DECIMAL $\pm .005$ [± 0.15]

C/M

ANGULAR $\pm 1^\circ$
UNLESS OTHERWISE SPECIFIED

4341-4343

DATE

DESCRIPTION

REV.

Mouser Electronics

Authorized Distributor

Click to View Pricing, Inventory, Delivery & Lifecycle Information:

[Keystone Electronics:](#)

[4342](#)