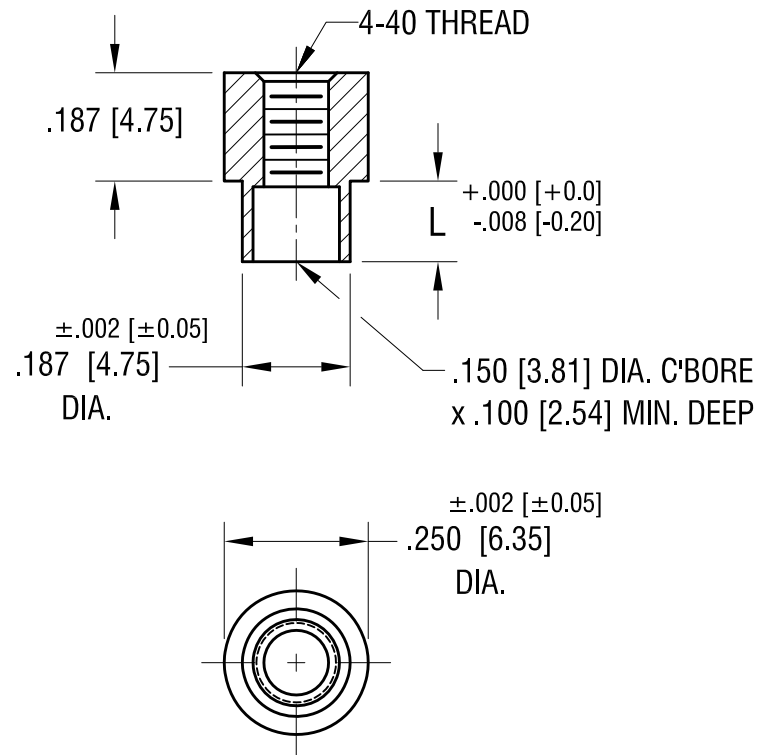


ACTUAL SIZE



P/N 1790-2



PART NO.	'L' DIM.
1790-2	.109 [2.77]
1790-3	.140 [3.56]

11.22.21	CHANGE AS PER ECN 12-162	A
DATE	DESCRIPTION	REV.

KEYSTONE ELECTRONICS CORP.			
www.keyelco.com • NEW HYDE PARK NY 11040 • Tel (516)328-7500			
PART NAME			
SWAGE THREADED STANDOFF			
MATERIAL			
BRASS			
FINISH	DUCTILE NICKEL PLATE	DRN BY	BOONE
		DATE	5.13.02
TOLERANCES	INCH [MM] DECIMAL ± .005 [± 0.13] ANGULAR ± 1° UNLESS OTHERWISE SPECIFIED	APP'D	RH
		SCALE	3X
CODE		DWG NO.	
C		1790-	

Mouser Electronics

Authorized Distributor

Click to View Pricing, Inventory, Delivery & Lifecycle Information:

[Keystone Electronics:](#)

[1790-3](#)