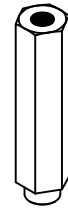
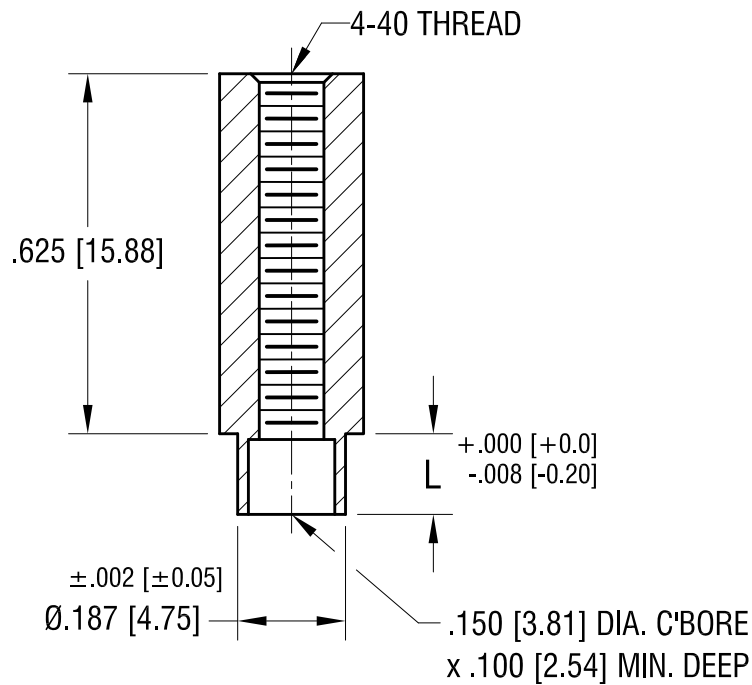
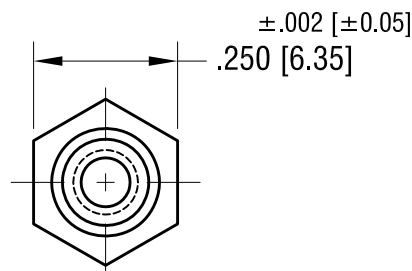


ACTUAL SIZE



P/N 1654-2



| PART NO. | 'L' DIM. |
|----------|-------------|
| 1654-2 | .109 [2.77] |
| 1654-3 | .140 [3.56] |

| | | |
|---------|--------------------------|------|
| 1122.21 | CHANGE AS PER ECN 21-158 | C |
| 5.13.02 | CHANGE AS PER ECN 02-041 | B |
| 1.18.96 | CHANGE AS PER ECR 96-022 | A |
| DATE | DESCRIPTION | REV. |

| KEYSTONE ELECTRONICS CORP. | | | |
|--|-----------------|--------|---------|
| www.keyelco.com • NEW HYDE PARK NY 11040 • Tel (516)328-7500 | | | |
| PART NAME | | | |
| SWAGE THREADED STANDOFF | | | |
| MATERIAL | | | |
| BRASS | | | |
| FINISH | | DRN BY | DATE |
| DUCTILE NICKEL PLATE | | BOONE | 7.01.82 |
| | | APP'D | SCALE |
| | | LN | 3X |
| TOLERANCES | INCH [MM] | CODE | DWG NO. |
| DECIMAL | ± .005 [± 0.13] | C | 1654- |
| ANGULAR | ± 1° | | |
| UNLESS OTHERWISE SPECIFIED | | | |

Mouser Electronics

Authorized Distributor

Click to View Pricing, Inventory, Delivery & Lifecycle Information:

[Keystone Electronics:](#)

[1654-2](#)