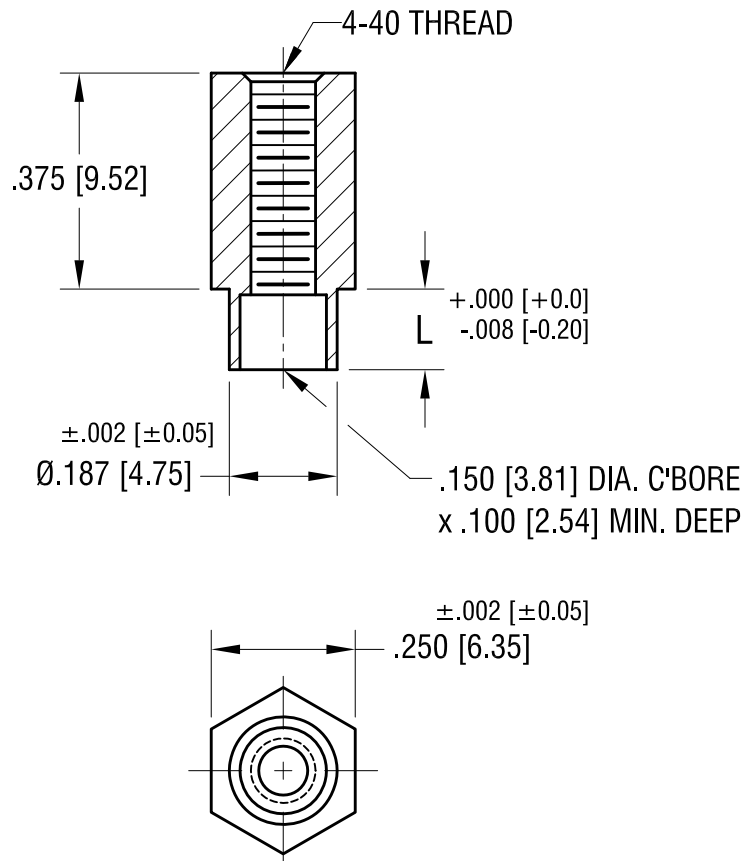


ACTUAL SIZE



P/N 1628-2



PART NO.	'L' DIM.
1628-2	.109 [2.77]
1628-3	.140 [3.56]

11.22.21	CHANGE AS PER ECN 21-157	A
DATE	DESCRIPTION	REV.

KEYSTONE ELECTRONICS CORP.					
www.keyelco.com • NEW HYDE PARK NY 11040 • Tel (516)328-7500					
PART NAME					
SWAGE THREADED STANDOFF					
MATERIAL					
BRASS					
FINISH DUCTILE NICKEL PLATE		DRN BY	BOONE	DATE	5.13.02
		APP'D	LN	SCALE	3X
TOLERANCES INCH [MM]		CODE	DWG NO.  1628-		
DECIMAL ± .005 [± 0.13 ]					
ANGULAR ± 1°					
UNLESS OTHERWISE SPECIFIED					

# Mouser Electronics

Authorized Distributor

Click to View Pricing, Inventory, Delivery & Lifecycle Information:

[Keystone Electronics:](#)

[1628-2](#)