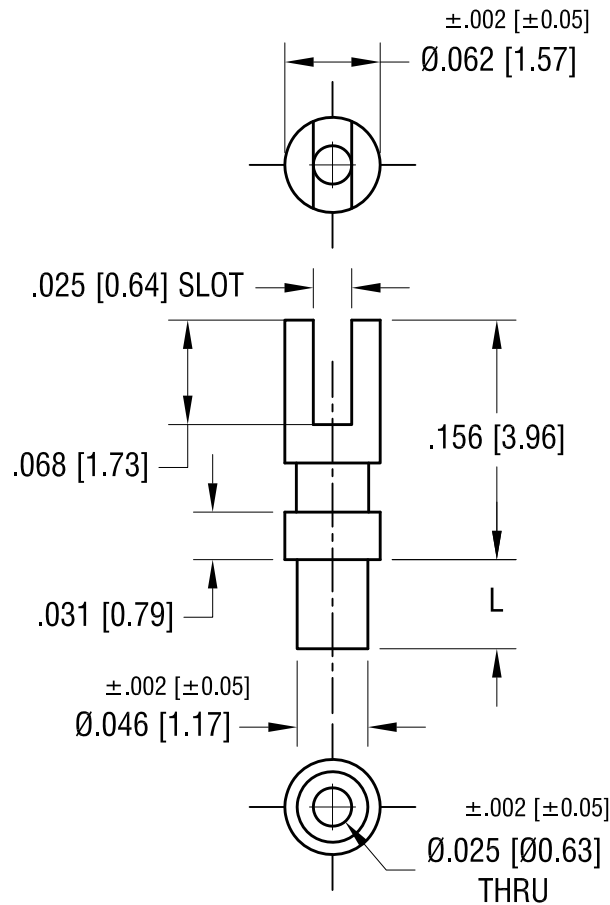


ACTUAL SIZE



P/N 1515-1



PART NO.	'L' DIM.
1515-1	.058 [1.47]
1515-2	.086 [2.18]
1515-3	.120 [3.05]
1515-4	.150 [3.81]

KEYSTONE ELECTRONICS CORP.

www.keyelco.com • NEW HYDE PARK NY 11040 • Tel (516)328-7500

PART NAME

TERMINAL

MATERIAL

BRASS

FINISH

TIN PLATE

DRN BY

BOONE

DATE

11.11.96

APP'D

RH

SCALE

8X

9.05.24 | UPDATED 1515-2 LENGTH DIM.

A

TOLERANCES

INCH [MM]

DECIMAL

$\pm .005$ [± 0.13]

ANGULAR

$\pm 1^\circ$

UNLESS OTHERWISE SPECIFIED

CODE

C

DWG NO.

1515-

DATE

DESCRIPTION

REV.

Mouser Electronics

Authorized Distributor

Click to View Pricing, Inventory, Delivery & Lifecycle Information:

[Keystone Electronics:](#)

[1515-2](#)