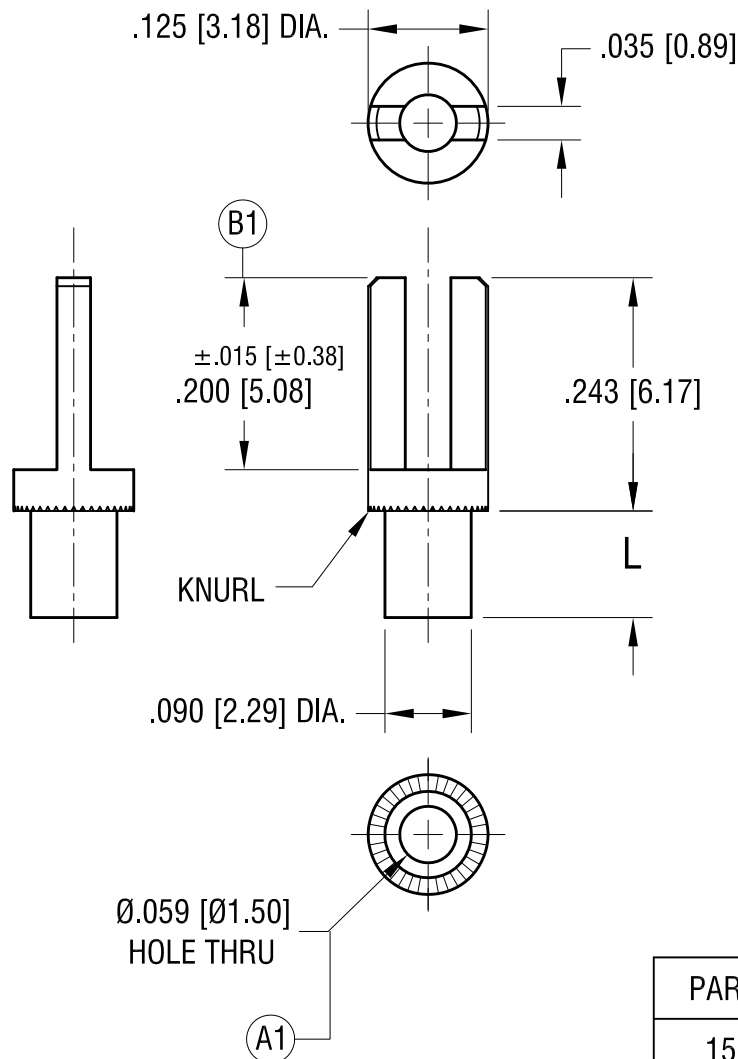


**ACTUAL SIZE**

P/N 1511-2



| PART NO. | 'L' DIM.    |
|----------|-------------|
| 1511-1   | .080 [2.03] |
| 1511-2   | .111 [2.82] |
| 1511-3   | .143 [3.63] |
| 1511-4   | .174 [4.42] |

|         |  |      |
|---------|--|------|
| 8.31.21 | (B1) WAS .200±.005<br>CHANGE AS PER ECN 21-100   | B    |
| 5.21.14 | (A1) WAS .063 [1.60]<br>CHANGE AS PER ECN 14-052 | A    |
| DATE    | DESCRIPTION                                      | REV. |

| KEYSTONE ELECTRONICS CORP.                                     |                 |        |         |
|--|-----------------|--------|---------|
| www.keyelco.com • NEW HYDE PARK, NY 11040 • Tel (516) 328-7500 |                 |        |         |
| PART NAME  |                 |        |         |
| TERMINAL   |                 |        |         |
| MATERIAL   |                 |        |         |
| BRASS  |                 |        |         |
| FINISH   |                 | DRN BY | DATE    |
| TIN PLATE  |                 | BOONE  | 6.10.02 |
|  |                 | APP'D  | SCALE   |
|  |                 | LN     | 5X      |
| TOLERANCES   | INCH [MM]       | CODE   | DWG NO. |
| DECIMAL  | ± .005 [± 0.13] | C      | 1511-   |
| ANGULAR  | ± 1°            |        |         |
| UNLESS OTHERWISE SPECIFIED                                     |                 |        |         |

# Mouser Electronics

Authorized Distributor

Click to View Pricing, Inventory, Delivery & Lifecycle Information:

[Keystone Electronics:](#)

[1511-3](#)